

LOC/DME I-CER 111.15 Chan 48(Y)	APP CRS 005°	Rwy Ldg 9001 TDZE 90 Apt Elev 96
--	------------------------	---

ILS or LOC RWY 35R

ORLANDO INTL (MCO)

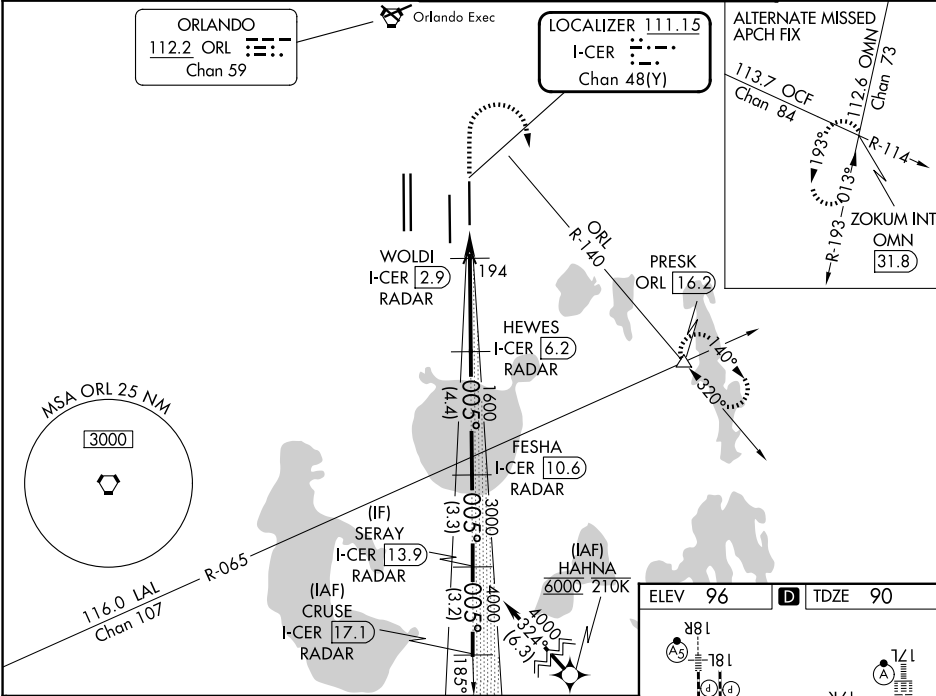
From HAHNA: RNAV 1-DME/DME/IRU or GPS required.
Aircraft not DME/DME/IRU or GPS equipped-RADAR required for procedure entry.
DME or RADAR required for LOC only.

Simultaneous approach authorized. Bright lights on highway midway between Rwy 35L and Rwy 35R may be mistaken for runway lights. For inop ALS, increase S-LOC 35R Cats C/D visibility to RVR 5500. When using alternate missed approach, simultaneous approach NA.

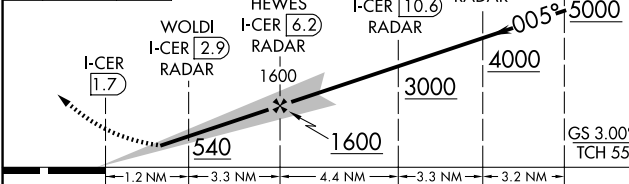


MISSED APPROACH: Climb to 500 then climbing right turn to 3000 on ORL VORTAC R-140 to PRESK INT/ORL 16.2 DME and hold, continue climb-in-hold to 3000.

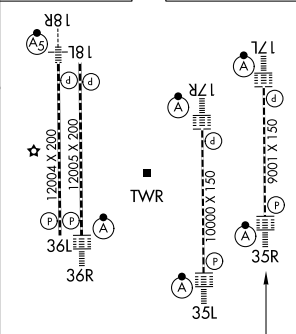
D-ATIS 121.25	ORLANDO APP CON 124.8 307.0	ORLANDO TOWER 118.45 253.5 (17L/35R, 17R/35L) 124.3 253.5 (18L/36R, 18R/36L)	GND CON 126.4 (E) 121.8 (W)
-------------------------	---------------------------------------	--	---



500	3000	PRESK	VGSI and ILS glidepath not coincident (VGSI Angle 3.00/TCH 73).	CRUSE I-CER 17.1 RADAR
↑	↻	△		



ELEV 96	TDZE 90
---------	---------



CATEGORY	A	B	C	D	
S-ILS 35R	290/18 200 (200-½)				
S-LOC 35R	460/24	370 (400-½)	460/35	370 (400-¾)	
CIRCLING	740-1	644 (700-1)	740-1¾	644 (700-2)	
FAF to MAP 4.6 NM					
Knots	60	90	120	150	180
Min:Sec	4:36	3:04	2:18	1:50	1:32

SE-3, 16 APR 2026 to 14 MAY 2026

SE-3, 16 APR 2026 to 14 MAY 2026