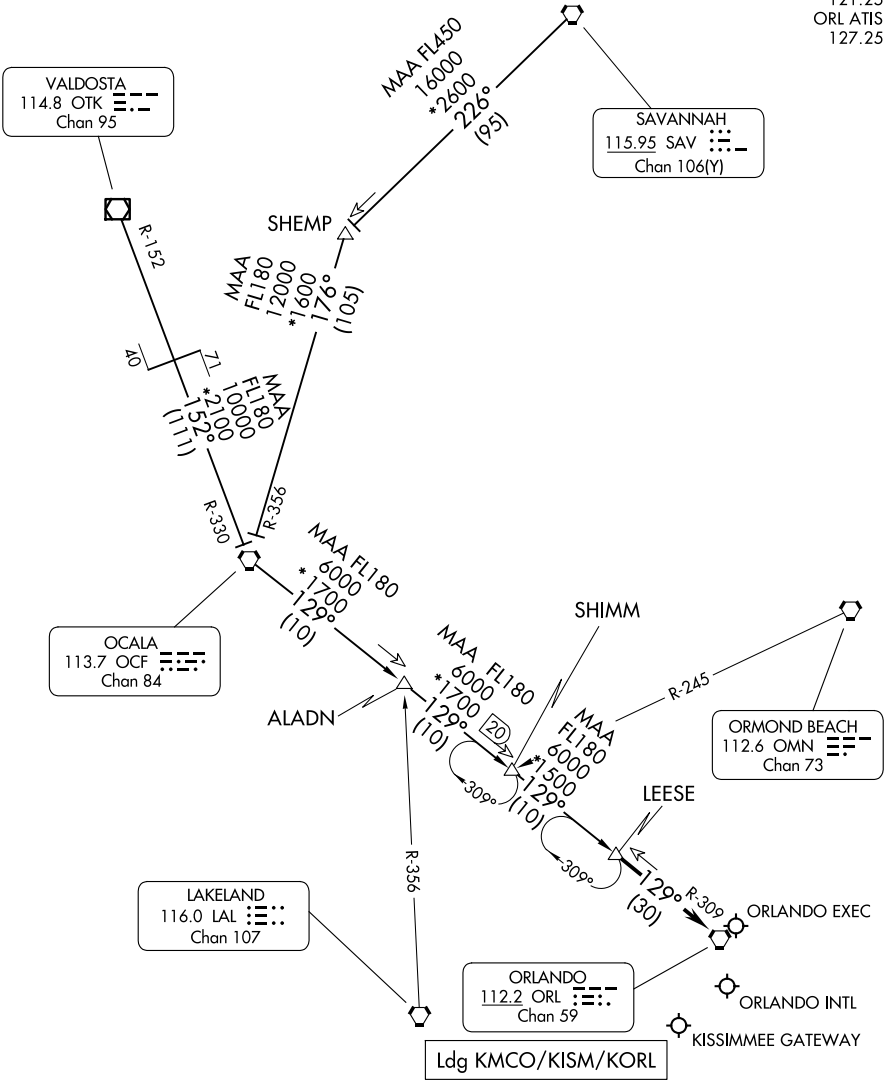


LEESE THREE ARRIVAL

ORLANDO, FLORIDA

NOTE: RADAR required.
NOTE: DME required.

JACKSONVILLE APP CON
128.675 263.05
ORLANDO APP CON
134.05 339.8
ISM ATIS
128.775
MCO D-ATIS ARR
121.25
ORL ATIS
127.25



(CONTINUED ON FOLLOWING PAGE)

NOTE: Chart not to scale.

LEESE THREE ARRIVAL

ORLANDO, FLORIDA

SE-3, 16 APR 2026 to 14 MAY 2026

SE-3, 16 APR 2026 to 14 MAY 2026

ARRIVAL ROUTE DESCRIPTION

OCALA TRANSITION (OCF.LEESE3): From over OCF VORTAC on OCF R-129 to LEESE. Thence

SAVANNAH TRANSITION (SAV.LEESE3): From over SAV VORTAC on SAV R-226 to SHEMA, then on OCF R-356 to OCF VORTAC, then on OCF R-129 to LEESE. Thence

VALDOSTA TRANSITION (OTK.LEESE3): From over OTK VOR/DME on OTK R-152 and OCF R-330 to OCF VORTAC, then on OCF R-129 to LEESE. Thence

. . . . from LEESE on ORLANDO VORTAC ORL R-309 to ORL VORTAC.
Expect RADAR vectors to final approach course after LEESE.

SE-3, 16 APR 2026 to 14 MAY 2026

SE-3, 16 APR 2026 to 14 MAY 2026