

MINNIE SIX ARRIVAL  
(MINNIE.MINNIE6) 20FEB25

ORLANDO, FLORIDA

ORLANDO APP CON  
134.05 339.8  
ISM ATIS  
128.775  
LEE ATIS  
134.325  
MCO D-ATIS ARR  
121.25  
ORL ATIS  
127.25  
SFB ATIS  
125.975  
TIX ATIS  
120.625

OCALA  
113.7 OCF  
Chan 84

ORLANDO  
112.2 ORL  
Chan 59

ST PETERSBURG  
116.4 PIE  
Chan 111

LAKELAND  
116.0 LAL  
Chan 107

SARASOTA  
117.0 SRQ  
Chan 117

LEE COUNTY  
114.15 RSW  
Chan 88(Y)

NOTE: LEESBURG INTL: Expect RADAR vectors to airport after UNITY.  
NOTE: All other airports: Expect RADAR vectors to final approach course after UNITY.

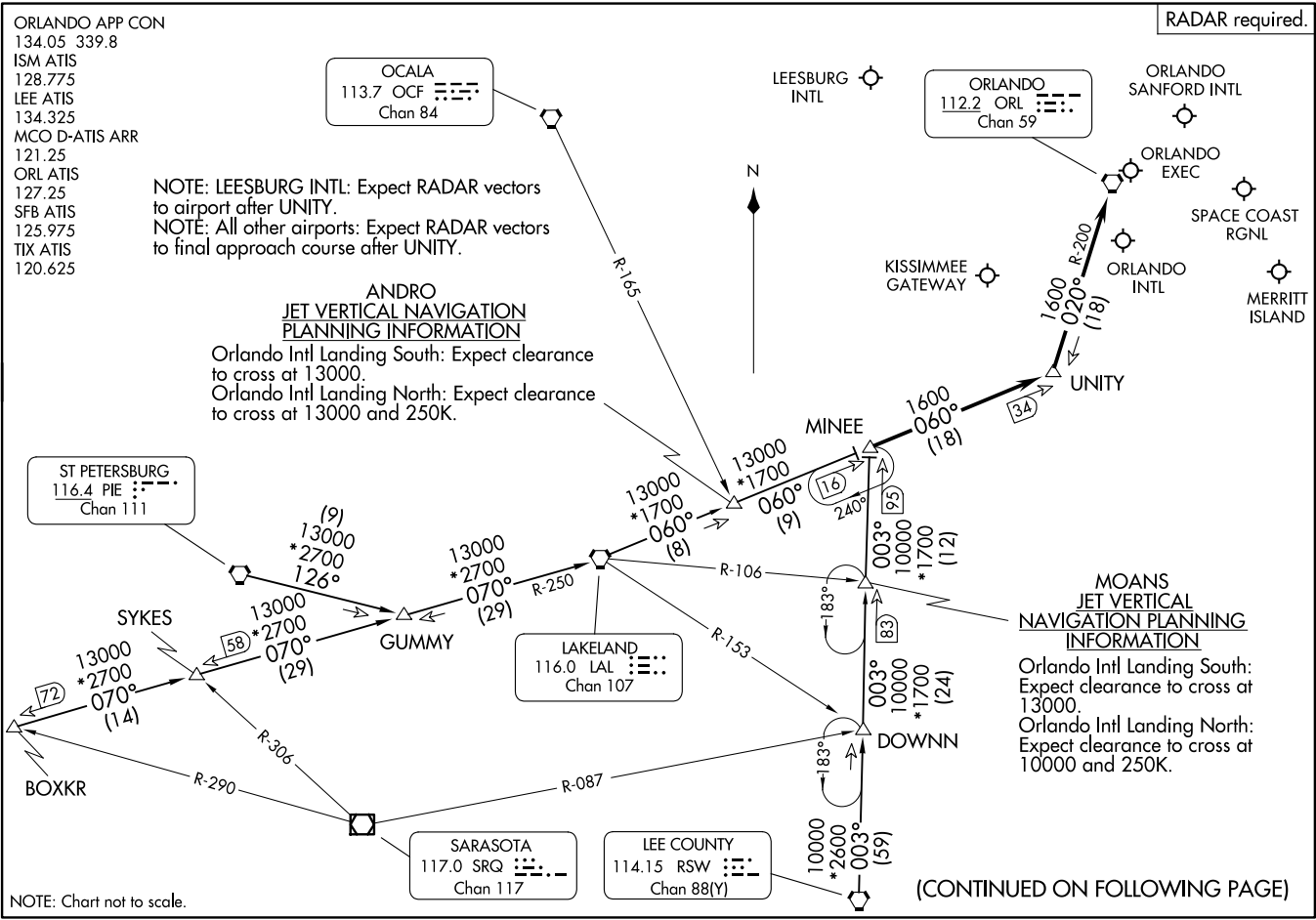
**ANDRO  
JET VERTICAL NAVIGATION  
PLANNING INFORMATION**

Orlando Intl Landing South: Expect clearance to cross at 13000.  
Orlando Intl Landing North: Expect clearance to cross at 13000 and 250K.

**MOANS  
JET VERTICAL NAVIGATION  
PLANNING INFORMATION**

Orlando Intl Landing South: Expect clearance to cross at 13000.  
Orlando Intl Landing North: Expect clearance to cross at 10000 and 250K.

RADAR required.



NOTE: Chart not to scale.

(CONTINUED ON FOLLOWING PAGE)

(MINNIE.MINNIE6) 252119  
MINNIE SIX ARRIVAL

ORLANDO, FLORIDA

AL-571 (FAA)

# MINEE SIX ARRIVAL

ORLANDO, FLORIDA

## ARRIVAL ROUTE DESCRIPTION

BOXKR TRANSITION (BOXKR.MINEE6): From over BOXKR on LAL R-250 to LAL VORTAC, then on LAL R-060 to MINEE. Thence. . . .

LEE COUNTY TRANSITION (RSW.MINEE6): From over RSW VORTAC on RSW R-003 to MINEE. Thence. . . .

ST PETERSBURG TRANSITION (PIE.MINEE6): From over PIE VORTAC on PIE R-126 to GUMMY, then on LAL R-250 to LAL VORTAC, then on LAL R-060 to MINEE. Thence. . . .

. . . . from over MINEE on LAL R-060 to UNITY, then on ORL R-200 to ORL VORTAC.

SE-3, 16 APR 2026 to 14 MAY 2026

SE-3, 16 APR 2026 to 14 MAY 2026