

MZULO THREE DEPARTURE (RNAV)
(MZUL03.MZULO) 19MAY22

ORLANDO, FLORIDA
ORLANDO INTL (MCO)

ORLANDO DEP CON
124.8 307.0
D-ATIS DEP
120.525
CLNC DEL
134.7 341.7
CPDLC
GND CON
126.4 (E)
121.8 (W)
ORLANDO INTL TOWER
118.45 253.5 (17L-35R, 17R-35L)
124.3 253.5 (18L-36R, 18R-36L)

ORLANDO EXEC

RNAV 1 - DME/DME/IRU or GPS.

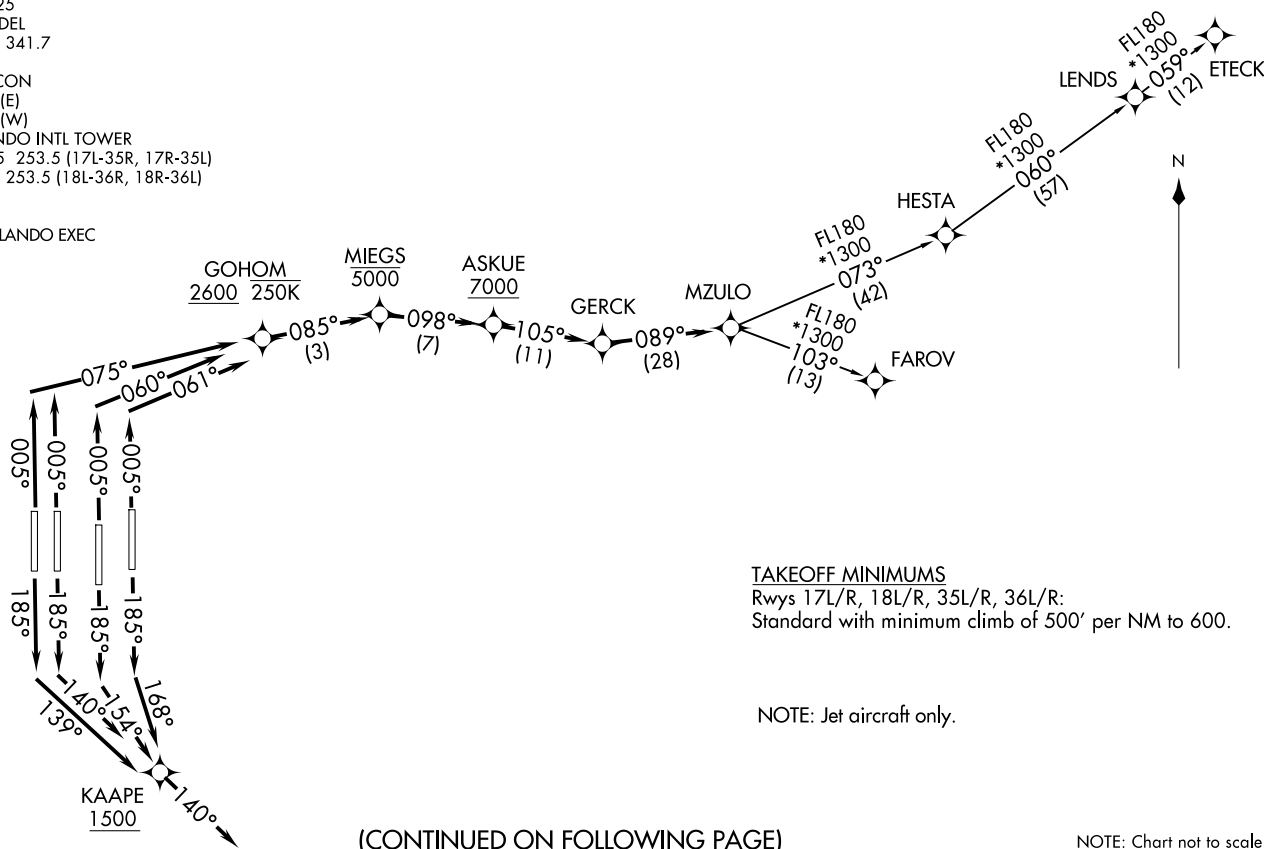
RADAR required.

TOP ALTITUDE:
7000

(MZUL03.MZULO) 25219
MZULO THREE DEPARTURE (RNAV)

AL-571 (FAA)

ORLANDO INTL (MCO)
ORLANDO, FLORIDA



MZULO THREE DEPARTURE (RNAV)



DEPARTURE ROUTE DESCRIPTION
SEE ADDITIONAL REQUIREMENTS ON AAUP

TAKEOFF RUNWAY 17L: Climb on heading 185° to intercept course 168° to cross KAAPE at or above 1500, then on track 140°, for vectors to GERCK, thence. . .

TAKEOFF RUNWAY 17R: Climb on heading 185° to intercept course 154° to cross KAAPE at or above 1500, then on track 140°, for vectors to GERCK, thence. . .

TAKEOFF RUNWAY 18L: Climb on heading 185° to intercept course 140° to cross KAAPE at or above 1500, then on track 140°, for vectors to GERCK, thence. . .

TAKEOFF RUNWAY 18R: Climb on heading 185° to intercept course 139° to cross KAAPE at or above 1500, then on track 140°, for vectors to GERCK, thence. . .

TAKEOFF RUNWAY 35L: Climb on heading 005° to intercept course 060° to cross GOHOM at or above 2600 and at or below 250K, then on track 085° to cross MIEGS at or below 5000, then on track 098° to cross ASKUE at or above 7000, then on track 105° to GERCK, thence. . .

TAKEOFF RUNWAY 35R: Climb on heading 005° to intercept course 061° to cross GOHOM at or above 2600 and at or below 250K, then on track 085° to cross MIEGS at or below 5000, then on track 098° to cross ASKUE at or above 7000, then on track 105° to GERCK, thence. . .

TAKEOFF RUNWAYS 36L/R: Climb on heading 005° to intercept course 075° to cross GOHOM at or above 2600 and at or below 250K, then on track 085° to cross MIEGS at or below 5000, then on track 098° to cross ASKUE at or above 7000, then on track 105° to GERCK, thence ...

... on track 089° to MZULO. Maintain 7000. Expect clearance to filed altitude 10 minutes after departure.

- ETECK TRANSITION (MZULO3.ETECK)
- FAROV TRANSITION (MZULO3.FAROV)
- LENDS TRANSITION (MZULO3.LENDS)

SE-3, 16 APR 2026 to 14 MAY 2026

SE-3, 16 APR 2026 to 14 MAY 2026