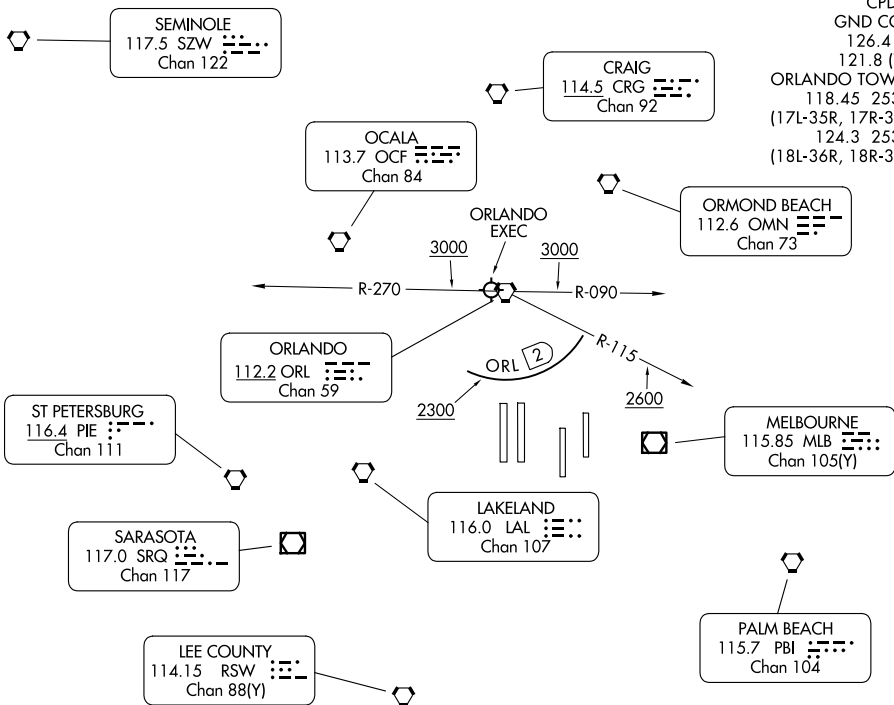


ORLANDO SIX DEPARTURE

**TOP ALTITUDE:
7000**

RADAR required - Takeoff Rwys 35L/R, 36L/R: DME required.

ORLANDO DEP CON
124.8 307.0 (E)
120.15 284.7 (W)
D-ATIS DEP
120.525
CLNC DEL
134.7 341.7
CPDLC
GND CON
126.4 (E)
121.8 (W)
ORLANDO TOWER
118.45 253.5
(17L-35R, 17R-35L)
124.3 253.5
(18L-36R, 18R-36L)



TAKEOFF MINIMUMS
Rwys 17L/R, 18L/R, 35L/R, 36L/R: Standard.

NOTE: Chart not to scale.

SE-3, 16 APR 2026 to 14 MAY 2026

SE-3, 16 APR 2026 to 14 MAY 2026



DEPARTURE ROUTE DESCRIPTION

TAKEOFF ALL RUNWAYS: Climb on assigned heading for RADAR vectors to assigned route. Maintain 7000. Expect filed altitude 10 minutes after departure.

ALL AIRCRAFT: ATC crossing restrictions and climb gradients: if unable to accept crossing restrictions and climb rates advise ATC prior to taxi.

Rwys 35L/R, 36L/R: Cross 2 DME south of ORL VORTAC at or above 2300, cross ORL VORTAC R-115 at or above 2600, cross ORL VORTAC R-090 or R-270 at or above 3000. Rws 35L/R: 566' per NM to 3000, Rwy 36L: 637' per NM to 3000, Rwy 36R: 621' per NM to 3000.