

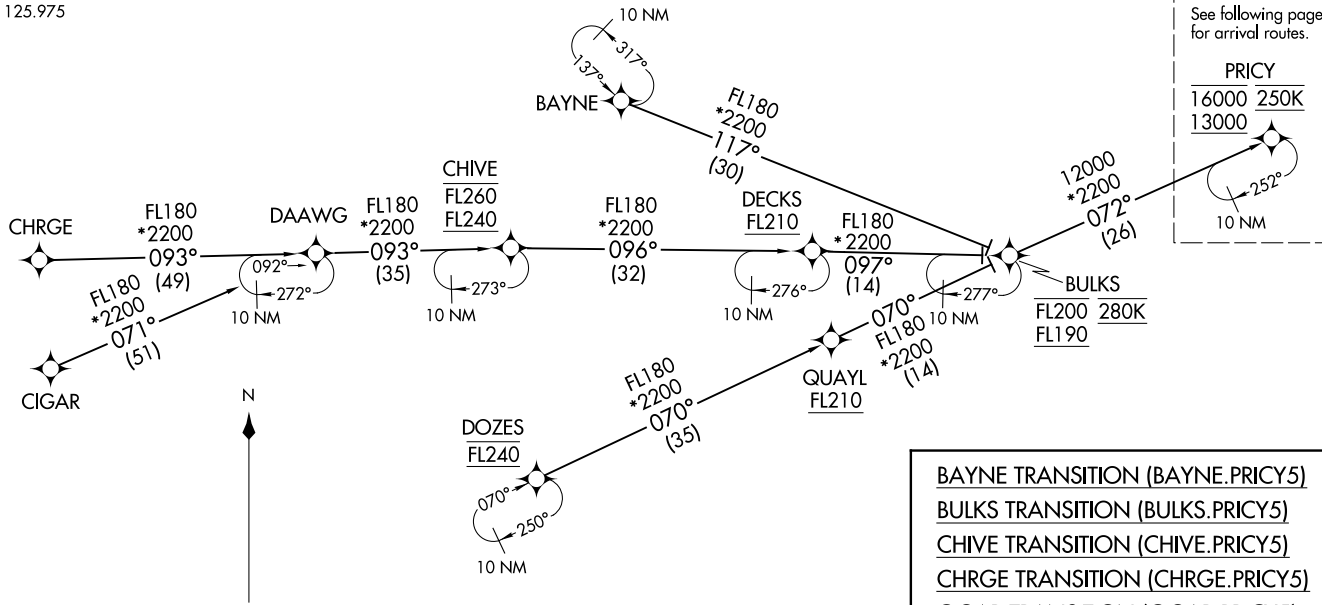
PRICY FIVE ARRIVAL (RNAV) Transition Routes
(PRICY.PRICY5) 19MAR25

PRICY FIVE ARRIVAL (RNAV) Transition Routes
AL-571 (FAA)

ORLANDO APP CON
134.05 339.8
ISM ATIS
128.775
LEE ATIS
134.325
MCO D-ATIS ARR
121.25
MLB ATIS
132.55
ORL ATIS
127.25
SFB ATIS
125.975

- NOTE: Jet aircraft only.
- NOTE: Do not file BULKS, CHIVE or DOZES Transitions - to be assigned by ATC.
- NOTE: Landing south use Rwy 18R Transition, Landing north use Rwy 36L Transition.
- NOTE: CHRGE and CIGAR Transitions, GPS required.

RNAV 1 - DME/DME/IRU or GPS.
From CHRGE: RNP 1-GPS.
From CIGAR: RNP 1-GPS.
RADAR required.



- BAYNE TRANSITION (BAYNE.PRICY5)
- BULKS TRANSITION (BULKS.PRICY5)
- CHIVE TRANSITION (CHIVE.PRICY5)
- CHRGE TRANSITION (CHRGE.PRICY5)
- CIGAR TRANSITION (CIGAR.PRICY5)
- DOZES TRANSITION (DOZES.PRICY5)

NOTE: Chart not to scale.

(CONTINUED ON FOLLOWING PAGE)

ORLANDO, FLORIDA

ORLANDO, FLORIDA

PRICY FIVE ARRIVAL (RNAV) Arrival Routes

ORLANDO, FLORIDA

ORLANDO APP CON
 134.05 339.8
 ISM ATIS
 128.775
 LEE ATIS
 134.325
 MCO D-ATIS ARR
 121.25
 MLB ATIS
 132.55
 ORL ATIS
 127.25
 SFB ATIS
 125.975

LEESBURG INTL



ORLANDO SANFORD INTL



HAMMY



ORLANDO EXEC



ORLANDO INTL



RNAV 1 - DME/DME/IRU or GPS.
 From CHRGE: RNP 1-GPS.
 From CIGAR: RNP 1-GPS.

RADAR required.

DVOLA
6000 210K
 MCO Ldg Rwys 17L/R, 18L/R

GIRAF
8000 220K

ARHIP
060° (17)

OTKEE
11000

Ldg ISM/LEE/MLB/ORL/SFB

TAYYE
12000 10000

PRICY
16000 250K
13000

JUMBA
068° (15)

AMADS
9000

LORRA
7000 210K

MCO Ldg Rwys 35L/R, 36L/R

EXBAN



MELBOURNE ORLANDO INTL



10 NM



10 NM



10 NM



10 NM



- NOTE: Jet aircraft only.
- NOTE: Do not file BULKS, CHIVE or DOZES Transitions - to be assigned by ATC.
- NOTE: Landing south use Rwy 18R Transition, Landing north use Rwy 36L Transition.
- NOTE: CHRGE and CIGAR Transitions, GPS required.

SE-3, 16 APR 2026 to 14 MAY 2026

SE-3, 16 APR 2026 to 14 MAY 2026

NOTE: Chart not to scale.

(CONTINUED ON FOLLOWING PAGE)

PRICY FIVE ARRIVAL (RNAV) Arrival Routes

ORLANDO, FLORIDA

ARRIVAL ROUTE DESCRIPTION

MCO: From PRICY on track 071° to BOCCE, then on track 068° to JUMBA.

LANDING MCO RUNWAYS 17L/R, 18L/R: From JUMBA on track 068° to cross TAYYE between 10000 and 12000, then on track 060° to ARHIP, then on track 006° to cross GIRAF at or above 8000 and at 220K, then on track 006° to cross DVOLA at 6000 and at 210K, then on track 006°. Expect RADAR vectors to final approach course.

LANDING MCO RUNWAYS 35L/R, 36L/R: From JUMBA on track 104° to cross AMADS at or below 9000, then on track 104° to cross LORRA at 7000 and at 210K, then on heading 096°. Expect RADAR vectors to final approach course.

LANDING LEE/SFB/ISM/MLB/ORL: From PRICY on track 071° to BOCCE, then on track 056° to cross OTKEE at 11000, then on track 056°. Expect RADAR vectors to final approach course.

SE-3, 16 APR 2026 to 14 MAY 2026

SE-3, 16 APR 2026 to 14 MAY 2026