

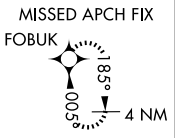
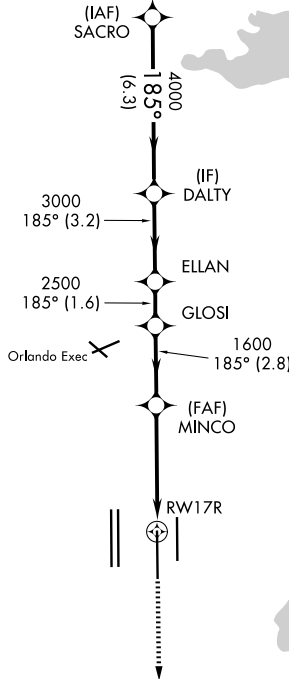
WAAS CH <b>72913</b> <b>W17A</b>	APP CRS <b>185°</b>	Rwy Ldg <b>10000</b> TDZE <b>90</b> Apt Elev <b>96</b>
----------------------------------------	------------------------	--------------------------------------------------------------

# RNAV (GPS) RWY 17R

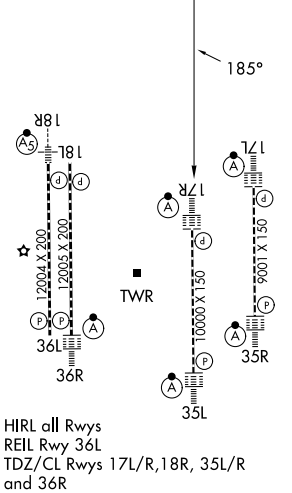
ORLANDO INTL (MCO)

RNP APCH-GPS.		ALSF-2 	MISSED APPROACH: Climb to 3000 direct FOBUK and hold.
D-ATIS <b>121.25</b>	ORLANDO APP CON <b>124.8 307.0</b>	ORLANDO TOWER <b>118.45 253.5</b> (17L/35R, 17R/35L) <b>124.3 253.5</b> (18L/36R, 18R/36L)	GND CON <b>126.4</b> (E) <b>121.8</b> (W)

## RADAR REQUIRED



ELEV 96	<b>D</b>	TDZE 90
---------	----------	---------



HIRL all Rwys  
REIL Rwy 36L  
TDZ/CL Rwys 17L/R, 18R, 35L/R  
and 36R

VGSI and RNAV glidepath not coincident (VGSI Angle 3.00/TCH 71).		3000	FOBUK
SACRO DALTY ELLAN GLOSI MINCO RWY17R		↑	✦
4000 — 185° — 4000 — 3000 — 2500 — 1600 — 1.6 NM to RWY17R			
GP 3.00° TCH 53			
6.3 NM — 3.2 NM — 1.6 NM — 2.8 NM — 2.9 NM — 1.6 NM			
CATEGORY	A	B	C
LPV DA		290/18	200 (200-½)
LNAV/VNAV DA		526/50	436 (500-1)
LNAV MDA	660/24	570 (600-½)	660-1¼ 570 (600-1¼)
CIRCLING	740-1	644 (700-1)	740-2 644 (700-1¼) 644 (700-2)