

WAAS CH <b>40212</b> <b>W36A</b>	APP CRS <b>005°</b>	Rwy Ldg <b>11601</b> TDZE <b>92</b> Apt Elev <b>96</b>
--	------------------------	--

# RNAV (GPS) RWY 36R

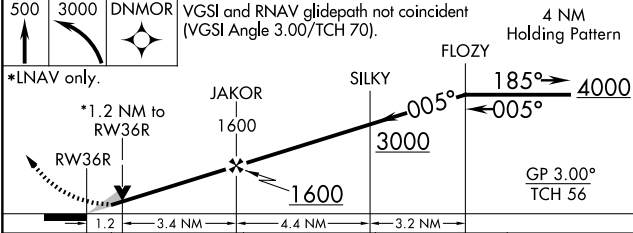
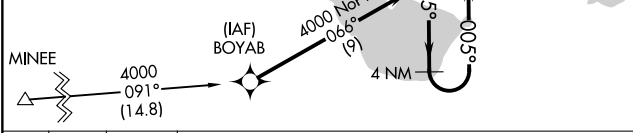
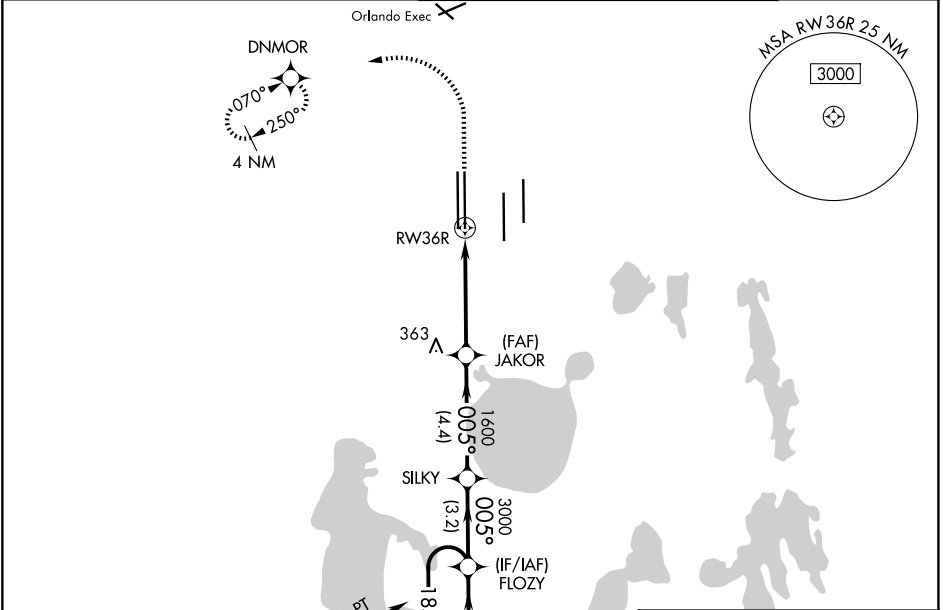
ORLANDO INTL (MCO)

⚠ For uncompensated Baro-VNAV systems, LNAV/VNAV NA below -1°C (31°F) or above 54°C (130°F). DME/DME RNP-0.3 NA. Simultaneous approach authorized. LNAV procedure NA during simultaneous operations. Use of FD or AP providing RNAV track guidance required during simultaneous operations. For Inop ALS, increase LNAV/VNAV all Cats visibility to RVR 6000.

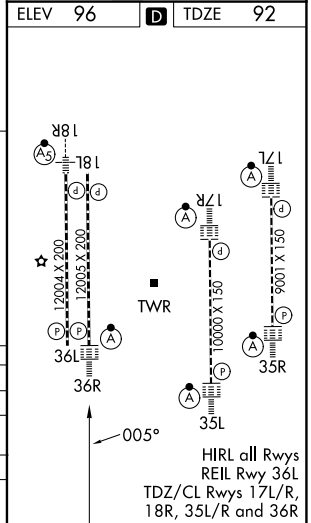
ALSF-2  
ⓐ

MISSED APPROACH: Climb to 500 then climbing left turn to 3000 direct DNMOR and hold, continue climb-in-hold to 3000.

D-ATIS <b>121.25</b>	ORLANDO APP CON <b>124.8 307.0</b>	ORLANDO TOWER <b>118.45 253.5</b> (17L/35R, 17R/35L) <b>124.3 253.5</b> (18L/36R, 18R/36L)	GND CON <b>126.4</b> (E) <b>121.8</b> (W)
-------------------------	---------------------------------------	--	---



CATEGORY	A	B	C	D
LPV DA		292/18	200 (200-½)	
LNAV/VNAV DA		454/40	362 (400-¾)	
LNAV MDA	540/24	448 (500-½)	540/45	448 (500-¾)
CIRCLING	740-1	644 (700-1)	740-1¾ 644 (700-1¾)	740-2 644 (700-2)



SE-3, 16 APR 2026 to 14 MAY 2026

SE-3, 16 APR 2026 to 14 MAY 2026