

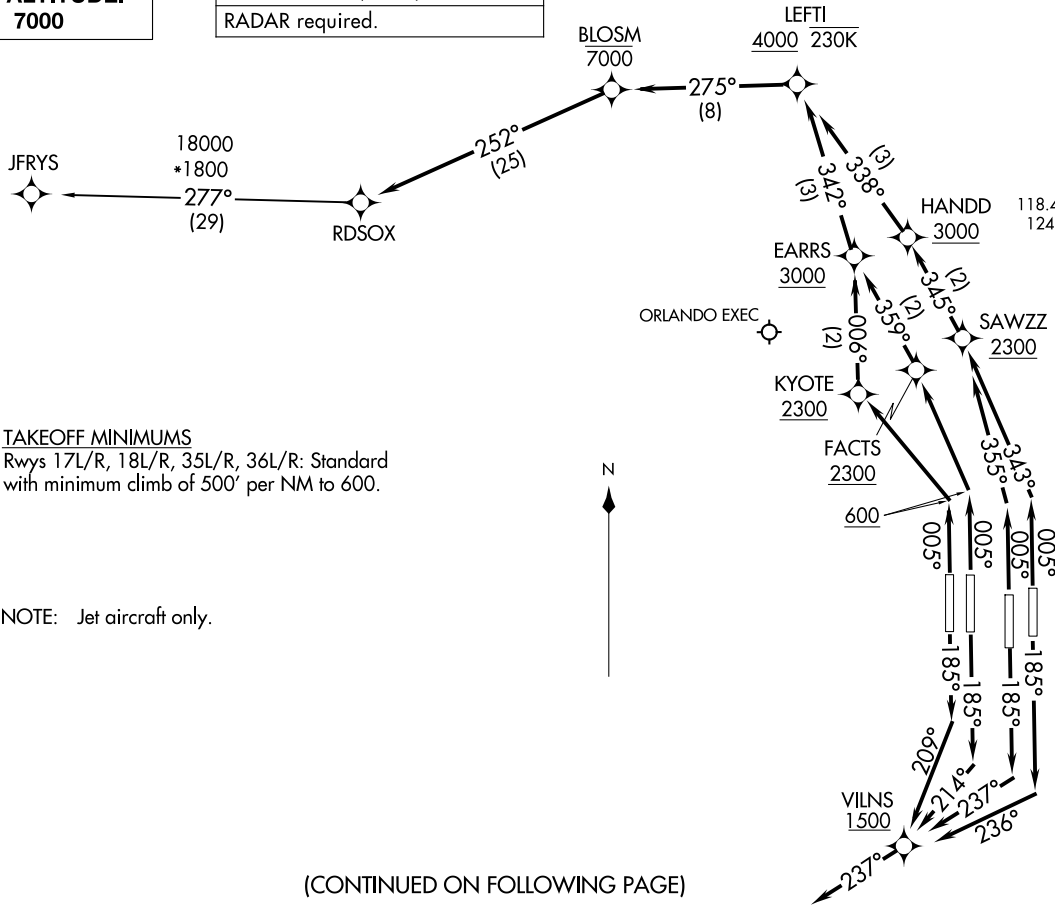
RDSOX ONE DEPARTURE (RNAV)
(RDSOX1 .RDSOX) 19MAY22

ORLANDO, FLORIDA
ORLANDO INTL (MCO)

**TOP ALTITUDE:
7000**

RNAV 1 - DME/DME/IRU or GPS.
RADAR required.

ORLANDO DEP CON
120.15 284.7
D-ATIS DEP
120.525
CLNC DEL
134.7 341.7
CPDLC
GND CON
126.4 (E)
121.8 (W)
ORLANDO TOWER
118.45 253.5 (17L-35R, 17R-35L)
124.3 253.5 (18L-36R, 18R-36L)



(CONTINUED ON FOLLOWING PAGE)

NOTE: Chart not to scale.

(RDSOX1 .RDSOX) 25219
RDSOX ONE DEPARTURE (RNAV)

ORLANDO INTL (MCO)
ORLANDO, FLORIDA

AL-571 (FAA)

RDSOX ONE DEPARTURE (RNAV)



DEPARTURE ROUTE DESCRIPTION SEE ADDITIONAL REQUIREMENTS ON AAUP

TAKEOFF RUNWAY 17L: Climb on heading 185° to intercept course 236° to cross VILNS at or above 1500, then on track 237°, for vectors to RDSOX, thence. . .

TAKEOFF RUNWAY 17R: Climb on heading 185° to intercept course 237° to cross VILNS at or above 1500, then on track 237°, for vectors to RDSOX, thence. . .

TAKEOFF RUNWAY 18L: Climb on heading 185° to intercept course 214° to cross VILNS at or above 1500, then on track 237°, for vectors to RDSOX, thence. . .

TAKEOFF RUNWAY 18R: Climb on heading 185° to intercept course 209° to cross VILNS at or above 1500, then on track 237°, for vectors to RDSOX, thence. . .

TAKEOFF RUNWAY 35L: Climb on heading 005° to intercept course 355° to cross SAWZZ at or above 2300, then on track 345° to cross HANDD at or above 3000, then on track 338° to cross LEFTI at or above 4000 and at or below 230K, then on track 275° to cross BLOSM at or below 7000, then on track 252° to RDSOX, thence. . .

TAKEOFF RUNWAY 35R: Climb on heading 005° to intercept course 343° to cross SAWZZ at or above 2300, then on track 345° to cross HANDD at or above 3000, then on track 338° to cross LEFTI at or above 4000 and at or below 230K, then on track 275° to cross BLOSM at or below 7000, then on track 252° to RDSOX, thence. . .

TAKEOFF RUNWAY 36L: Climb on heading 005° to 600, then direct to cross KYOTE at or above 2300, then on track 006° to cross EARRS at or above 3000, then on track 342° to cross LEFTI at or above 4000 and at or below 230K, then on track 275° to cross BLOSM at or below 7000, then on track 252° to RDSOX, thence. . .

TAKEOFF RUNWAY 36R: Climb on heading 005° to 600, then direct to cross FACTS at or above 2300, then on track 359° to cross EARRS at or above 3000, then on track 342° to cross LEFTI at or above 4000 and at or below 230K, then on track 275° to cross BLOSM at or below 7000, then on track 252° to RDSOX, thence. . .

. . .on assigned transition. Maintain 7000, expect clearance to filed altitude 10 minutes after departure.

ALL AIRCRAFT: ATC climb gradients: If unable to accept climb rates advise ATC prior to taxi. RUNWAY 35R: 566 FT/NM to 2300, RUNWAY 36L: 637 FT/NM to 2300, RUNWAY 36R: 621 FT/NM to 2300.

JFRYS TRANSITION (RDSOX1 .JFRYS)

SE-3, 16 APR 2026 to 14 MAY 2026

SE-3, 16 APR 2026 to 14 MAY 2026