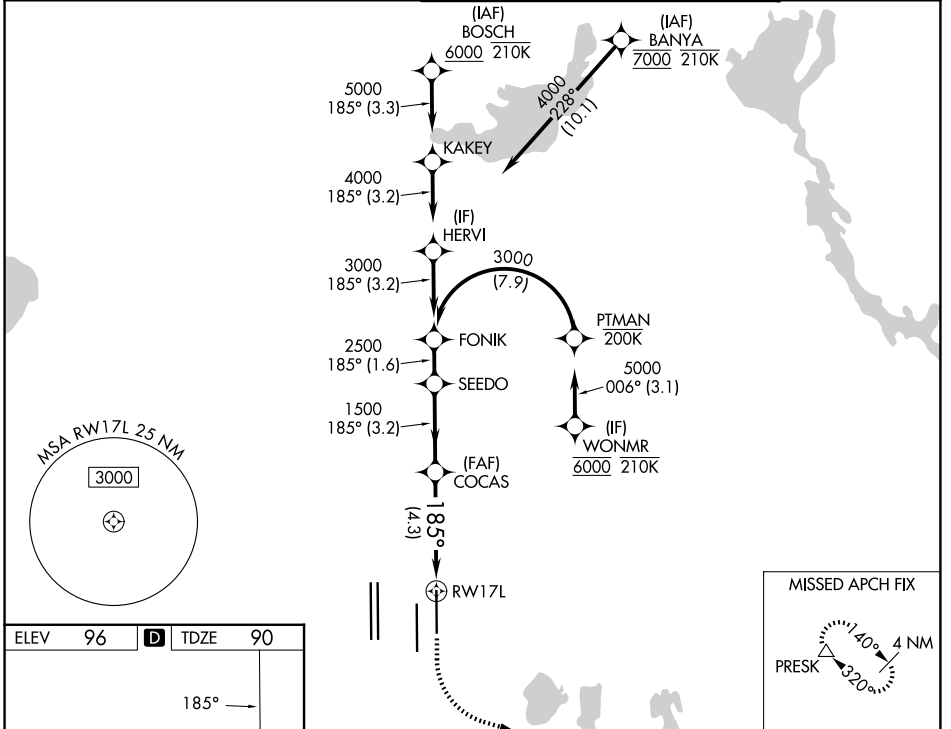


APP CRS	Rwy Ldg	<b>9001</b>
<b>185°</b>	TDZE	<b>90</b>
	Apt Elev	<b>96</b>

# RNAV (RNP) Z RWY 17L

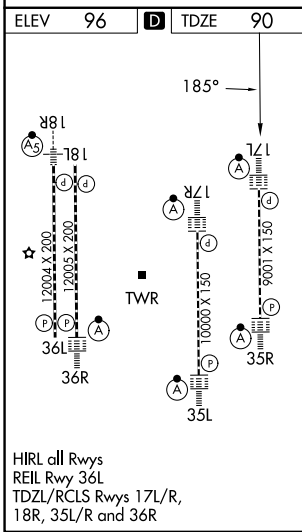
ORLANDO INTL (MCO)

RNP AR APCH - GPS. Authorization required. From PTMAN: RF.		ALSF-2 	MISSED APPROACH: Climb to 500 then climbing left turn to 3000 direct PRESK and hold, continue climb-in-hold to 3000.
<p><b>⚠</b> Simultaneous approach authorized. For uncompensated Baro-VNAV systems, procedure NA below 3°C or above 54°C. For inop ALS, increase RNP 0.12 all Cats visibility to RVR 4500 and RNP 0.3 all Cats visibility to 5500.</p>			
D-ATIS <b>121.25</b>	ORLANDO APP CON <b>124.8 307.0</b>	ORLANDO TOWER <b>118.45 253.5</b> (17L/35R, 17R/35L) <b>124.3 253.5</b> (18L/36R, 18R/36L)	GND CON <b>126.4</b> (E) <b>121.8</b> (W)



SE-3, 16 APR 2026 to 14 MAY 2026

SE-3, 16 APR 2026 to 14 MAY 2026



VGSI and RNAV glidepath not coincident (VGSI Angle 3.00/TCH 72). See planview for multiple IF locations.

FONIK	SEEDO	COCAS	RW17L
3000	2500	1500	
GP 3.00°		TCH 55	
1.6 NM		3.2 NM	
		4.3 NM	
CATEGORY	A	B	C
RNP 0.12 DA		358/24	268 (300-½)
RNP 0.30 DA		444/30	354 (400-¾)

**AUTHORIZATION REQUIRED**