

RNAV (RNP) Z RWY 18R


ORLANDO INTL (MCO)

APP CRS	Rwy Ldg	12004
185°	TDZE	94
	Apt Elev	96

RNP AR APCH - GPS. Authorization required. From LYENS: RF

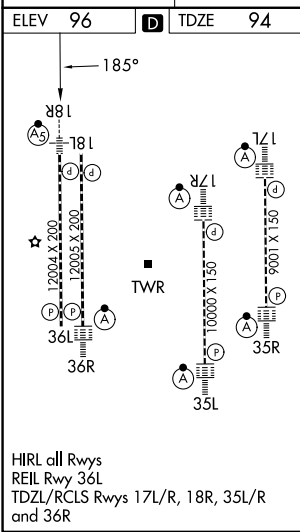
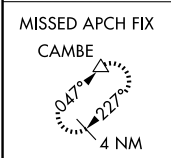
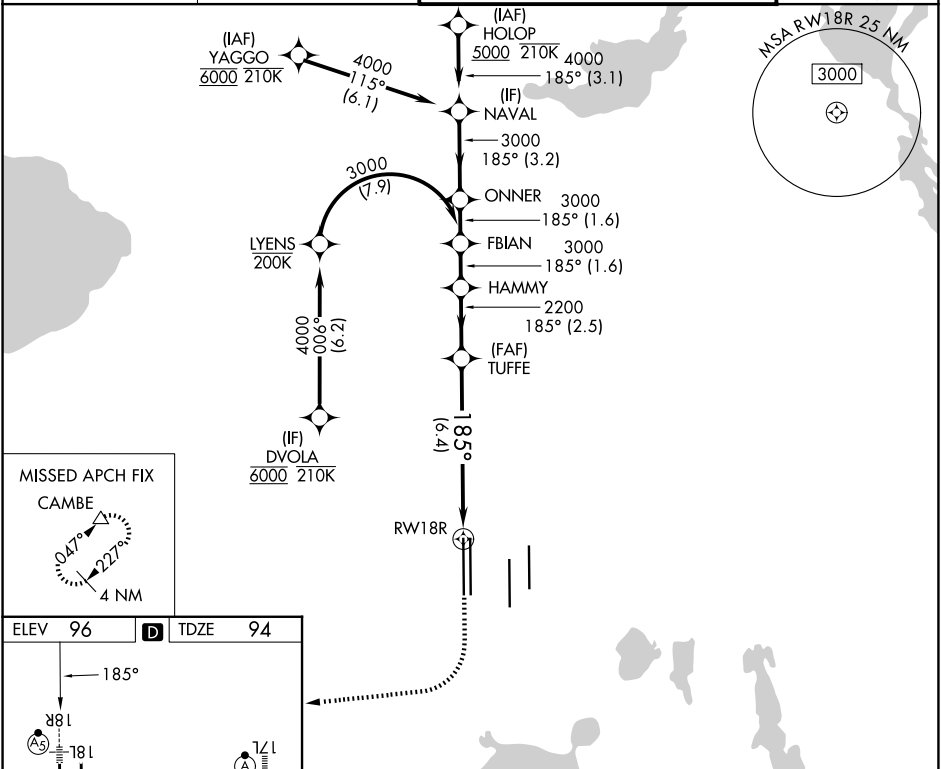
Simultaneous approach authorized. For uncompensated Baro-VNAV systems, procedure NA below 3°C or above 54°C. For inop ALS, increase RNP 0.13 all Cats visibility to RVR 4500 and RNP 0.30 all Cats visibility to 5500.

MALSR



MISSED APPROACH: Climb to 500 then climbing right turn to 4000 direct CAMBE and hold, continue climb-in-hold to 4000.

D-ATIS	ORLANDO APP CON	ORLANDO TOWER	GND CON
121.25	124.8 307.0	118.45 253.5 (17L/35R, 17R/35L) 124.3 253.5 (18L/36R, 18R/36L)	126.4 (E) 121.8 (W)



VGSI and RNAV glidepath not coincident (VGSI Angle 3.00/TCH 71).

FBIAN	HAMMY	TUFFE	RWY 18R
3000	3000	2200	
GP 3.00°			
TCH 55			
1.6 NM	2.5 NM	6.4 NM	
CATEGORY	A	B	C
RNP 0.13 DA	389/24	295 (300-1/2)	
RNP 0.30 DA	450/30	356 (400-5/8)	

500 4000 CAMBE

See planview for multiple IF locations.

AUTHORIZATION REQUIRED

SE-3, 16 APR 2026 to 14 MAY 2026

SE-3, 16 APR 2026 to 14 MAY 2026