


RNAV (GPS) Y RWY 18R

ORLANDO INTL (MCO)

WAAS CH 63212 W18B	APP CRS 185°	Rwy Ldg 12004 TDZE 94 Apt Elev 96
--	------------------------	--

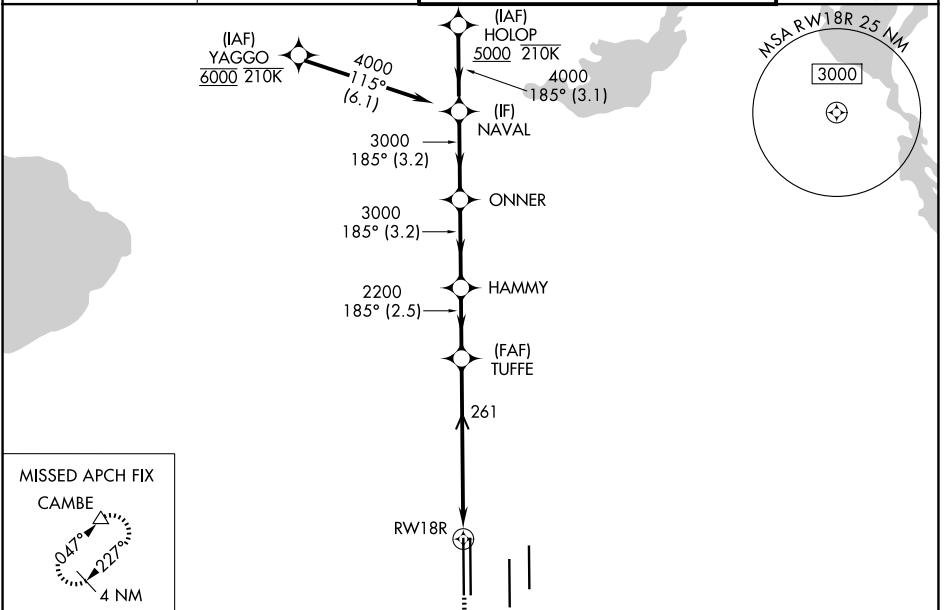
RNP APCH - GPS.

▼ For uncompensated Baro-VNAV systems, LNAV/VNAV NA below 1°C or above 54°C. LNAV procedure NA during simultaneous operations. Use of FD or AP required during simultaneous operations. Simultaneous approach authorized. For inop ALS, increase LNAV/VNAV all Cats visibility to RVR 4500.

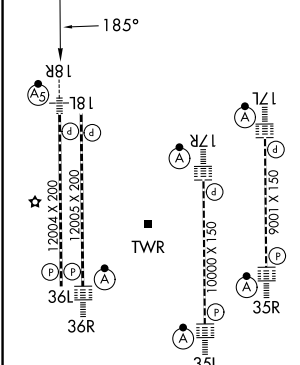
MALSR 

MISSED APPROACH: Climb to 500 then climbing right turn to 4000 direct CAMBE and hold, continue climb-in-hold to 4000.

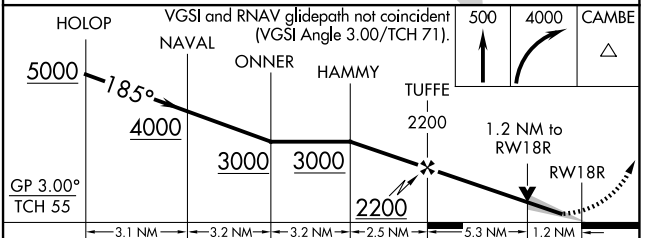
D-ATIS 121.25	ORLANDO APP CON 124.8 307.0	ORLANDO TOWER 118.45 253.5 (17L/35R, 17R/35L) 124.3 253.5 (18L/36R, 18R/36L)	GND CON 126.4 (E) 121.8 (W)
-------------------------	---------------------------------------	--	---



ELEV 96	D	TDZE 94
----------------	----------	----------------



HIRL all Rwys
REIL Rwy 36L
TDZL/RCLS Rwys 17L/R, 18R, 35L/R and 36R



CATEGORY	A	B	C	D
LPV DA		294/18	200 (200-½)	
LNAV/VNAV DA		390/24	296 (300-½)	
LNAV MDA	540/24	446 (500-½)	540/45	446 (500-¾)
CIRCLING	740-1	644 (700-1)	740-1¾ 644 (700-1¾)	740-2 644 (700-2)

SE-3, 16 APR 2026 to 14 MAY 2026

SE-3, 16 APR 2026 to 14 MAY 2026