

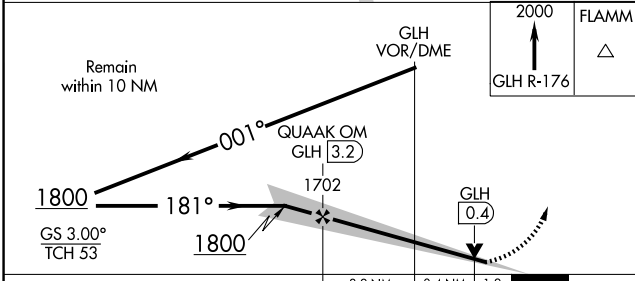
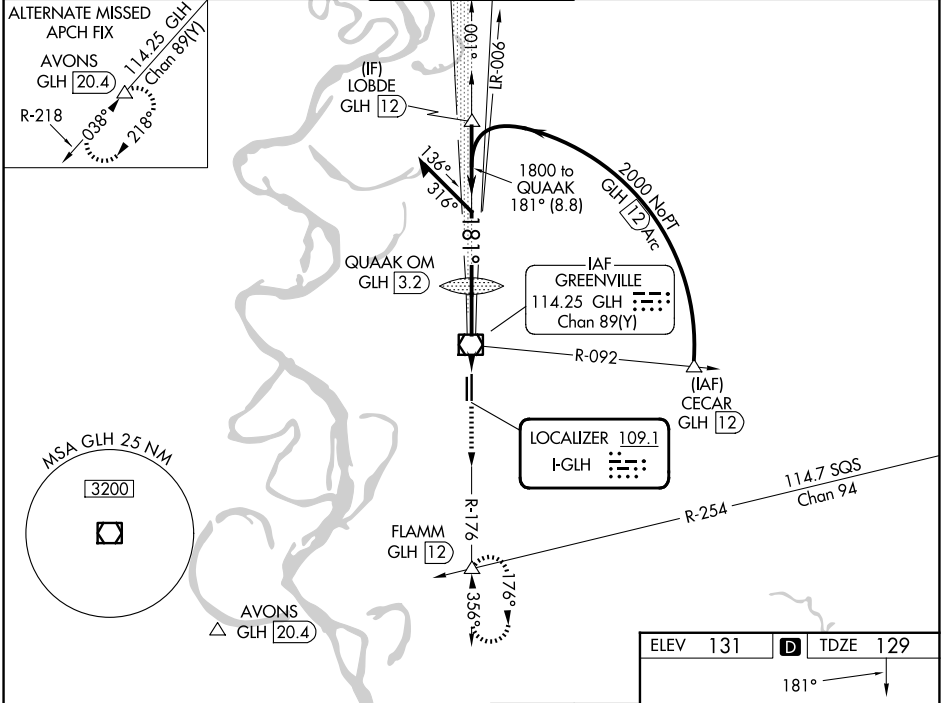
LOC I-GLH <b>109.1</b>	APP CRS <b>181°</b>	Rwy Ldg TDZE Apt Elev	<b>7981</b> <b>129</b> <b>131</b>
---------------------------	------------------------	-----------------------------	---

# ILS or LOC RWY 18L

GREENVILLE MID-DELTA (GLH)

<p>▼ Inop table does not apply to S-ILS 18L all Cats and S-LOC 18L Cats A and B. For inop ALS, increase S-LOC 18L Cat C and D visibility to 1½ SM.</p>	MALSR	<p>MISSED APPROACH: Climb to 2000 on GLH VOR/DME R-176 to FLAMM INT/GLH 12 DME and hold.</p>

ASOS <b>125.525</b>	MEMPHIS CENTER <b>135.875 269.35</b>	GREENVILLE TOWER ★ <b>119.0 (CTAF) 0 256.9</b>	GND CON <b>121.8 256.9</b>	UNICOM <b>122.95</b>
------------------------	---	---	-------------------------------	-------------------------



ELEV 131	<b>D</b>	TDZE 129			
<p>181° → 18L</p>					
REIL Rwy 36R	MIRL Rwy 18R-36L	HIRL Rwy 18L-36R			
FAF to MAP 4.8 NM					
Knots	60	90	120	150	180
Min:Sec	4:48	3:12	2:24	1:55	1:36

CATEGORY	A	B	C	D
S-ILS 18L		329/50	200 (200-1)	
S-LOC 18L		580/50	451 (500-1)	
CIRCLING	600-1	469 (500-1)	600-1½ 469 (500-1½)	800-2 669 (700-2)

SC-4, 16 APR 2026 to 14 MAY 2026

SC-4, 16 APR 2026 to 14 MAY 2026