

WAAS CH <b>49217</b> <b>W01A</b>	APP CRS <b>003°</b>	Rwy Idg <b>5000</b> TDZE <b>372</b> Apt Elev <b>372</b>
--	------------------------	---

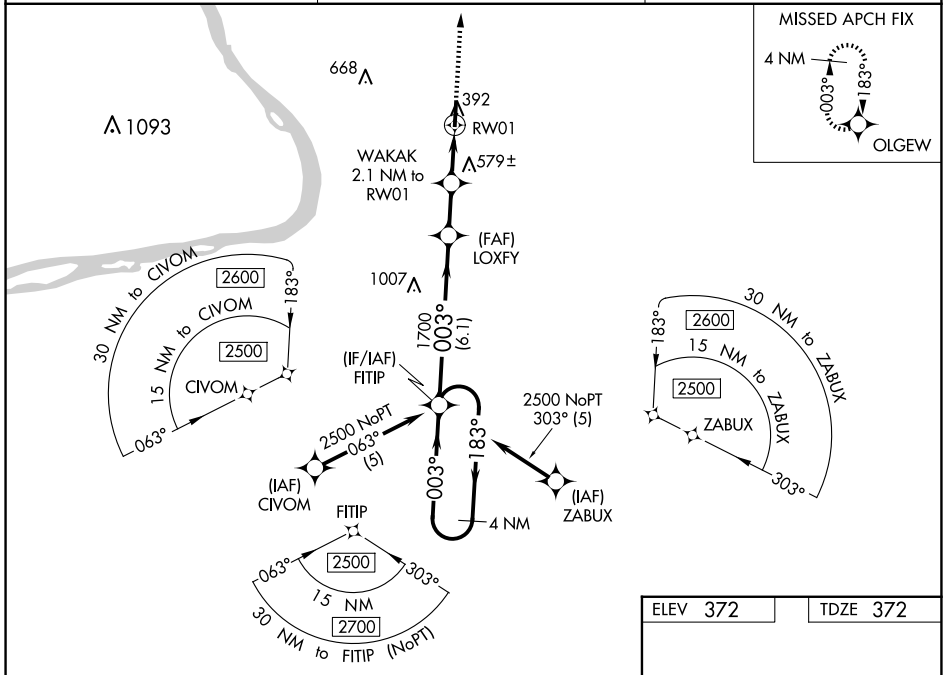
# RNAV (GPS) RWY 1

STURGIS MUNI (TWT)

**▼** Baro-VNAV NA when using Henderson altimeter setting. For uncompensated Baro-VNAV systems, LNAV/VNAV NA below -15°C (5°F) or above 54°C (130°F). DME/DME RNP-0.3 NA. When local altimeter setting not received use Henderson altimeter setting and increase LPV DA to 708 and visibility all Cats to 1 3/8 miles; increase LNAV/VNAV DA to 780 feet and visibility all Cats to 1 3/8 miles; increase all MDA 60 feet and Circling Cat C visibility 1/4 mile. Helicopter visibility reduction below 3/4 SM NA.

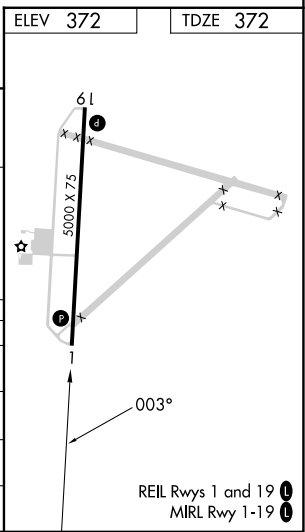
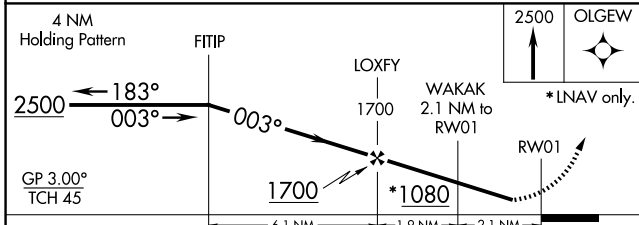
**MISSED APPROACH:**  
Climb to 2500 direct  
OLGEW and hold.

AWOS-3 <b>118.775</b>	EVANSVILLE APP CON * <b>124.025 290.9</b>	UNICOM <b>122.8 (CTAF) 0</b>
--------------------------	--	---------------------------------



SE-1, 16 APR 2026 to 14 MAY 2026

SE-1, 16 APR 2026 to 14 MAY 2026



CATEGORY	A	B	C	D
LPV DA	658-7/8		286 (300-7/8)	
LNAV/VNAV DA	730-1 1/4		358 (400-1 1/4)	
LNAV MDA	820-1	448 (500-1)	820-1 3/8	448 (500-1 3/8)
<b>C</b> CIRCLING	860-1 488 (500-1)	1000-1 628 (700-1)	1000-1 3/4 628 (700-1 3/4)	1120-2 1/2 748 (800-2 1/2)