


LOC I-GPT 110.9	APP CRS 137°	Rwy Ldg TDZE Apt Elev	9002 27 28
---------------------------	------------------------	-----------------------------	---------------------------------------

ILS Z or LOC Z RWY 14

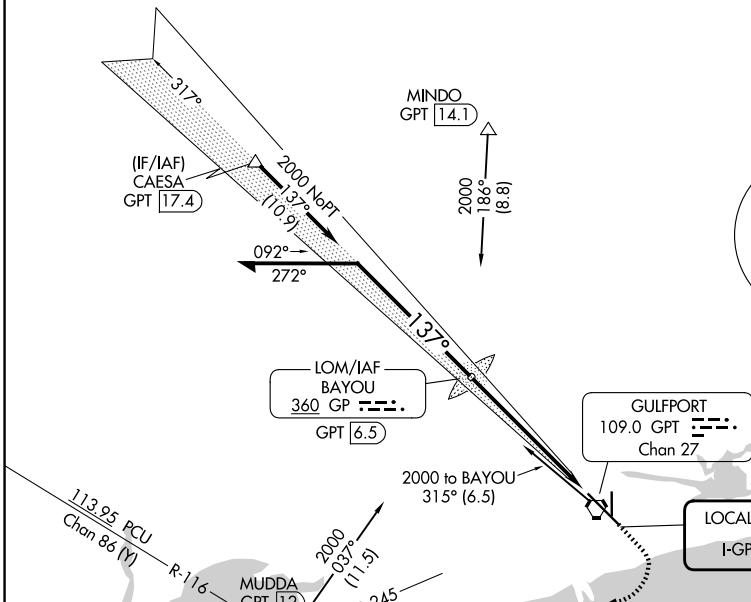
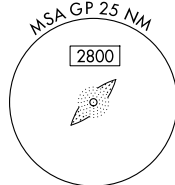
GULFPORT-BILOXI INTL (GPT)

<p>⚠ For inop ALS, increase S-ILS 14 Cat E visibility to RVR 4000 and S-LOC 14 Cat E visibility to 1½ SM. ASR **RVR 1800 authorized with use of FD or AP or HUD to DA.</p>	<p>MALS </p>	<p>MISSED APPROACH: Climb to 500 then climbing right turn to 2000 on GPT VORTAC R-245 to MUDDA INT/12 DME and hold.</p>
--	---	--

<p>ATIS 119.45</p>	<p>GULFPORT APP CON * 127.5 254.25</p>	<p>GULFPORT TOWER * 123.7 (CTAF) 0 339.8</p>	<p>GND CON 120.4 348.6</p>	<p>UNICOM 122.95</p>
--------------------------------------	--	--	--	--

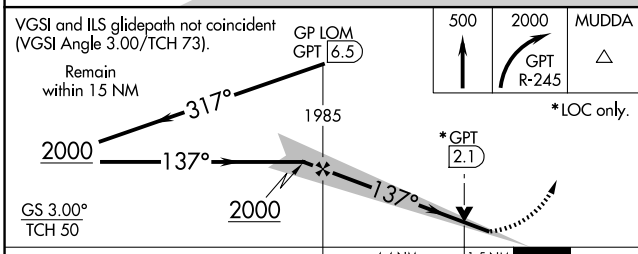
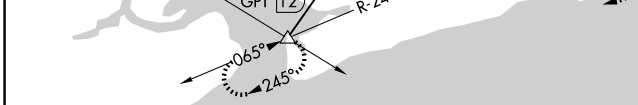
Procedure NA for arrivals at CAESA on V552 westbound.

ALTERNATE MISSED APCH FIX

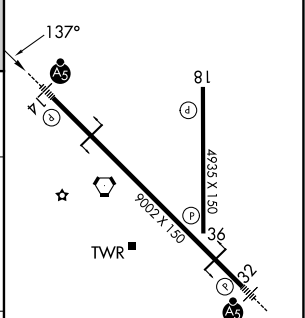


SC-4, 16 APR 2026 to 14 MAY 2026

SC-4, 16 APR 2026 to 14 MAY 2026



ELEV 28	TDZE 27
---------	---------



CATEGORY	A	B	C	D	E
S-ILS 14**	227/24		200 (200-½)		
S-LOC 14	560/24	533 (600-½)	560/55		533 (600-1)
CIRCLING	560-1 532 (600-1)	640-1 612 (700-1)	820-2¼ 792 (800-2¼)	820-2½ 792 (800-2½)	820-2¾ 792 (800-2¾)

HIRL Rwy 14-32	Ⓛ				
MIRL Rwy 18-36	Ⓛ				
FAF to MAP 5.9 NM					
Knots	60	90	120	150	180
Min:Sec	5:54	3:56	2:57	2:22	1:58