

LOC I-UXI 108.3	APP CRS 317°	Rwy Ldg TDZE Apt Elev	9002 27 28
---------------------------	------------------------	-----------------------------	---------------------------------------

ILS Z or LOC Z RWY 32

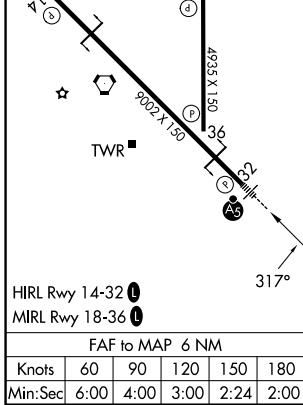
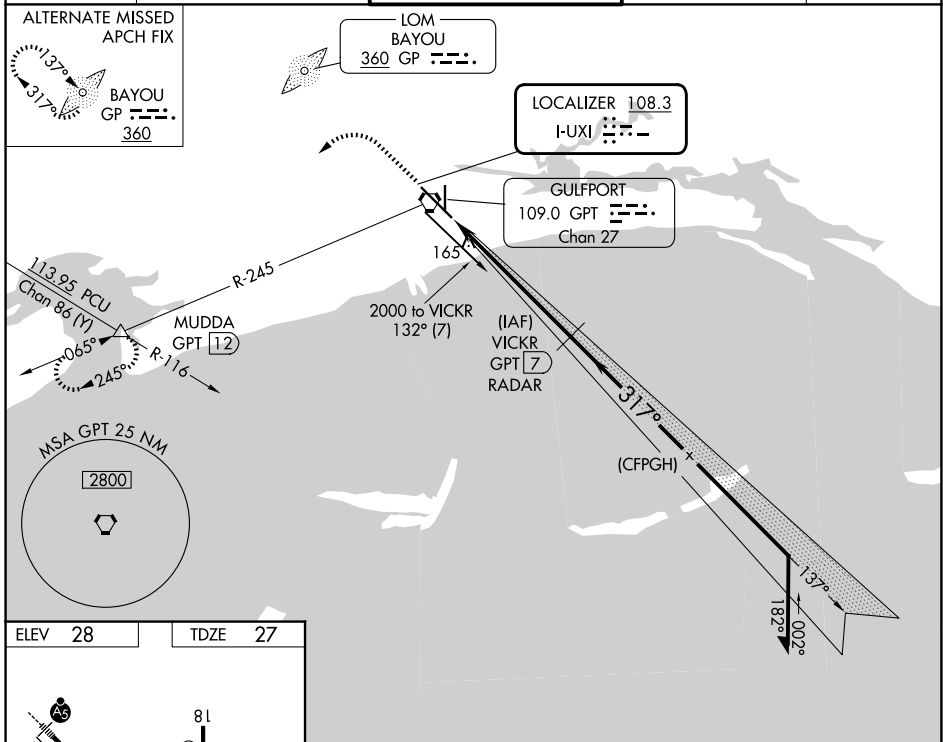
GULFPORT-BILOXI INTL (GPT)

DME or RADAR required, except DME required when control tower closed.

ASR Rwy 32 helicopter visibility reduction below RVR 4000 NA. Inop table does not apply to S-ILS 32. DME from GPT VORTAC. Simultaneous reception of I-UXI and GPT DME required. For inop ALS, increase S-LOC 32 all Cats visibility to RVR 5500.

MALSR MISSED APPROACH: Climb to 500 then climbing left turn to 2000 on GPT VORTAC R-245 to MUDDA INT/GPT 12 DME and hold.

ATIS 119.45	GULFPORT APP CON * 127.5 254.25	GULFPORT TOWER * 123.7 (CTAF) 0 339.8	GND CON 120.4 348.6	UNICOM 122.95
-----------------------	---	---	-------------------------------	-------------------------



ELEV 28	TDZE 27					
500	2000	GPT R-245	MUDDA	VICKR GPT 7 RADAR	VGSi and ILS glidepath not coincident (VGSi Angle 3.00/TCH 72).	
GS unusable when control tower closed. Only localizer minimums authorized during this period.		2000		Remain within 15 NM		
0.9 NM		5.1 NM		2000		
317°		137°		2000		
317°		182°		GS 3.00° TCH 55		
CATEGORY	A	B	C	D	E	
S-ILS 32		277/40	250 (300-¾)			
S-LOC 32		380/40	353 (400-¾)			
CIRCLING	520-1 492 (500-1)	640-1 612 (700-1)	760-2 732 (800-2)	760-2¼ 732 (800-2¼)	760-2½ 732 (800-2½)	

SC-4, 16 APR 2026 to 14 MAY 2026

SC-4, 16 APR 2026 to 14 MAY 2026