

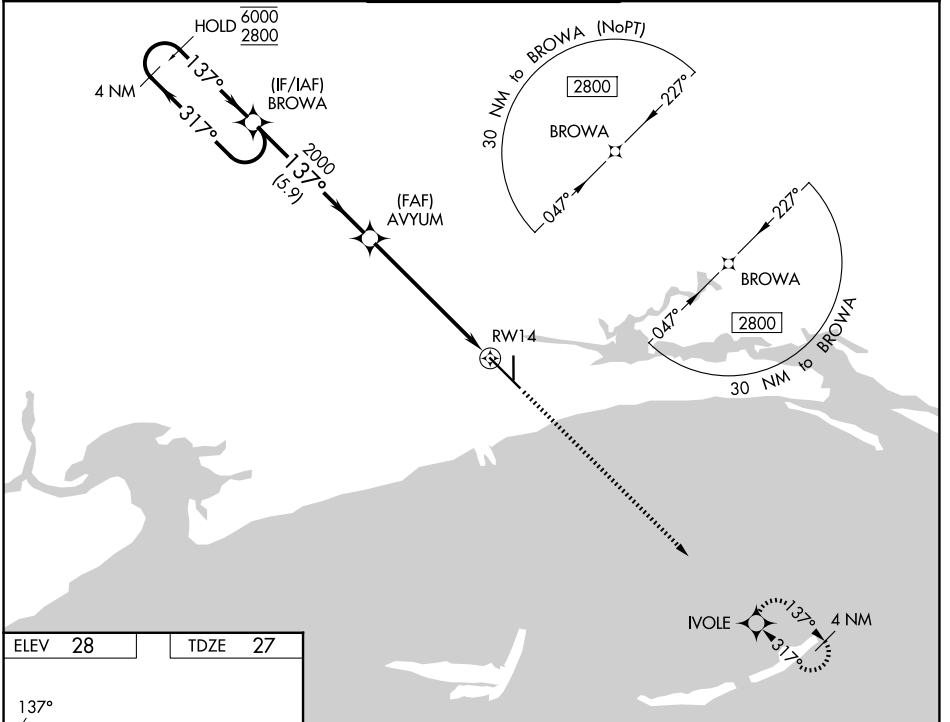
WAAS CH 97301 W14A	APP CRS 137°	Rwy Ldg 9002 TDZE 27 Apt Elev 28
---------------------------------	------------------------	---

RNAV (GPS) RWY 14

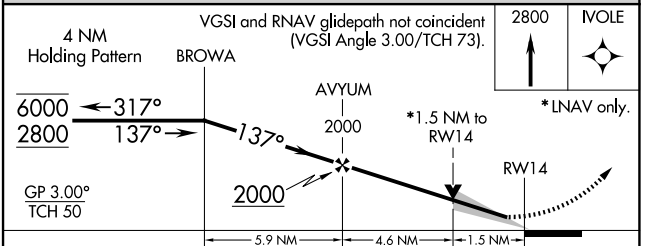
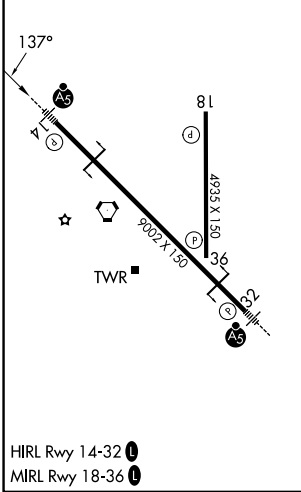
GULFPORT-BILOXI INTL (GPT)

RNP APCH.	MALSR 	MISSED APPROACH: Climb to 2800 direct IVOLE and hold.
<p>⚠ For uncompensated Baro-VNAV systems, LNAV/VNAV NA below -3°C or above 54°C. For inop ALS, increase LNAV/VNAV all Cats visibility to RVR 5500. ASR **RVR 1800 authorized with use of FD or AP or HUD to DA.</p>		

ATIS 119.45	GULFPORT APP CON * 127.5 254.25	GULFPORT TOWER * 123.7 (CTAF) 339.8	GND CON 120.4 348.6	UNICOM 122.95
-----------------------	---	---	-------------------------------	-------------------------



ELEV 28	TDZE 27
---------	---------



CATEGORY	A	B	C	D
LPV DA**		227/24	200 (200-½)	
LNAV/VNAV DA		404/35	377 (400-⅝)	
LNAV MDA	580/24	553 (600-½)	580/60	553 (600-1¼)
CIRCLING	580-1 552 (600-1)	640-1 612 (700-1)	820-2¼ 792 (800-2¼)	820-2½ 792 (800-2½)

SC-4, 16 APR 2026 to 14 MAY 2026

SC-4, 16 APR 2026 to 14 MAY 2026