


WAAS CH 73020 W17A	APP CRS 174°	Rwy Ldg 8600 TDZE 470 Apt Elev 470
--	------------------------	---

RNAV (GPS) RWY 17L

TSTC WACO (CNW)

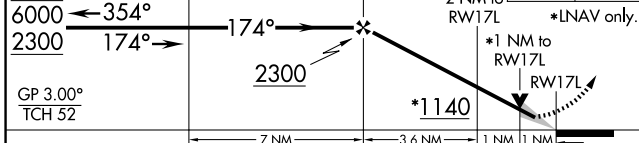
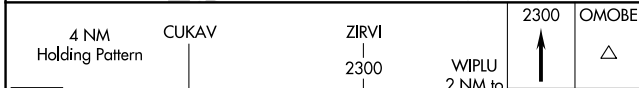
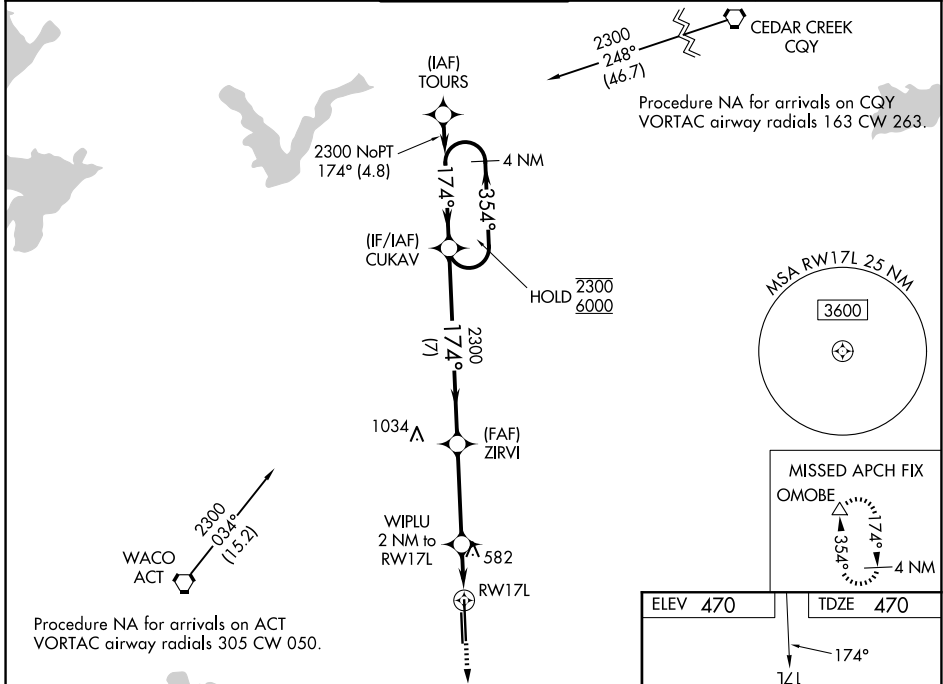
RNP APCH.

ASR For uncompensated Baro-VNAV systems, LNAV/VNAV NA below -15°C or above 54°C. For inop ALS, increase LNAV/VNAV all Cats visibility to 3/4 SM and LNAV Cats C/D visibility to 1 SM.

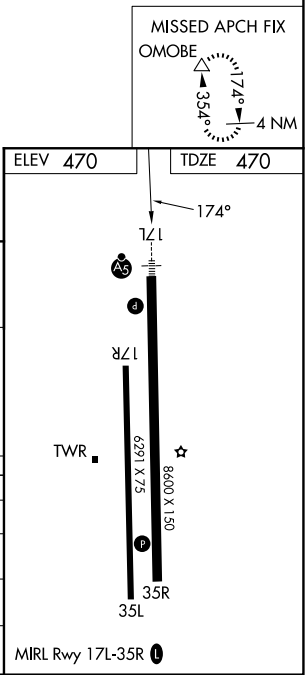
MALSRL 

MISSED APPROACH: Climb to 2300 direct OMOBE and hold.

AWOS-3PT 134.225	WACO APP CON ★ 127.65 227.125	TSTC TOWER ★ 124.0 (CTAF) 255.7	GND CON 121.7 0	UNICOM 122.95
----------------------------	---	---	---------------------------	-------------------------



CATEGORY	A	B	C	D
LPV DA		670-1/2	200 (200-1/2)	
LNAV/VNAV DA		720-1/2	250 (300-1/2)	
LNAV MDA	840-1/2	370 (400-1/2)	840-5/8	370 (400-5/8)
CIRCLING	940-1 470 (500-1)	1040-1 570 (600-1)	1040-1 1/2 570 (600-1 1/2)	1120-2 650 (700-2)



SC-3, 16 APR 2026 to 14 MAY 2026

SC-3, 16 APR 2026 to 14 MAY 2026