

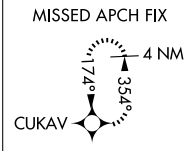
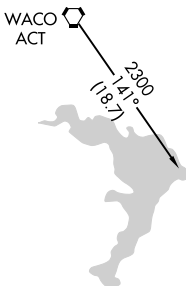
WAAS CH <b>82731</b> <b>W35A</b>	APP CRS <b>354°</b>	Rwy Ldg TDZE Apt Elev	<b>8600</b> <b>462</b> <b>470</b>
--	------------------------	-----------------------------	---

# RNAV (GPS) RWY 35R

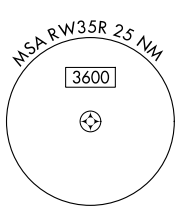
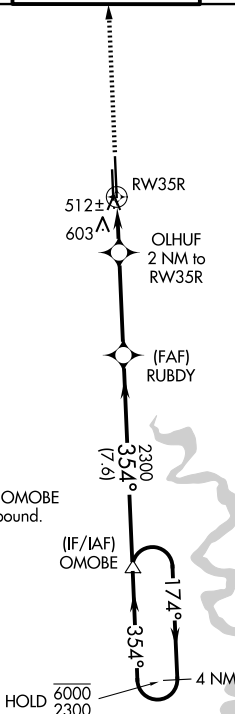
TSTC WACO (CNW)

RNP APCH. ASR	MISSED APPROACH: Climb to 2300 direct CUKAV and hold.		
AWOS-3PT <b>134.225</b>	WACO APP CON ★ <b>127.65 227.125</b>	TSTC TOWER ★ <b>124.0(CTAF) 255.7</b>	GND CON <b>121.70</b>
			UNICOM <b>122.95</b>

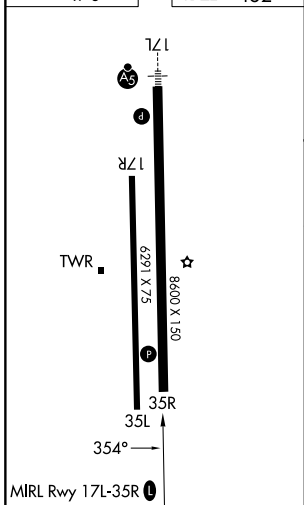
Procedure NA for arrivals on ACT  
VORTAC airway radials 050 CW 181.



NoPT for arrival at OMOBE  
on V15 northwest bound.



ELEV 470	TDZE 462
----------	----------



2300	CUKAV	OLHUF 2 NM to RW35R	RUBDY	OMOBE	4 NM Holding Pattern
		0.9 NM to RW35R	TCH 41	354°	174° → 6000 ← 354° 2300
		0.9	1.1	3.7 NM	7.6 NM
CATEGORY	A	B	C	D	
LP MDA	780-1 318 (400-1)				
LNAV MDA	860-1	398 (400-1)	860-1½	398 (400-1½)	