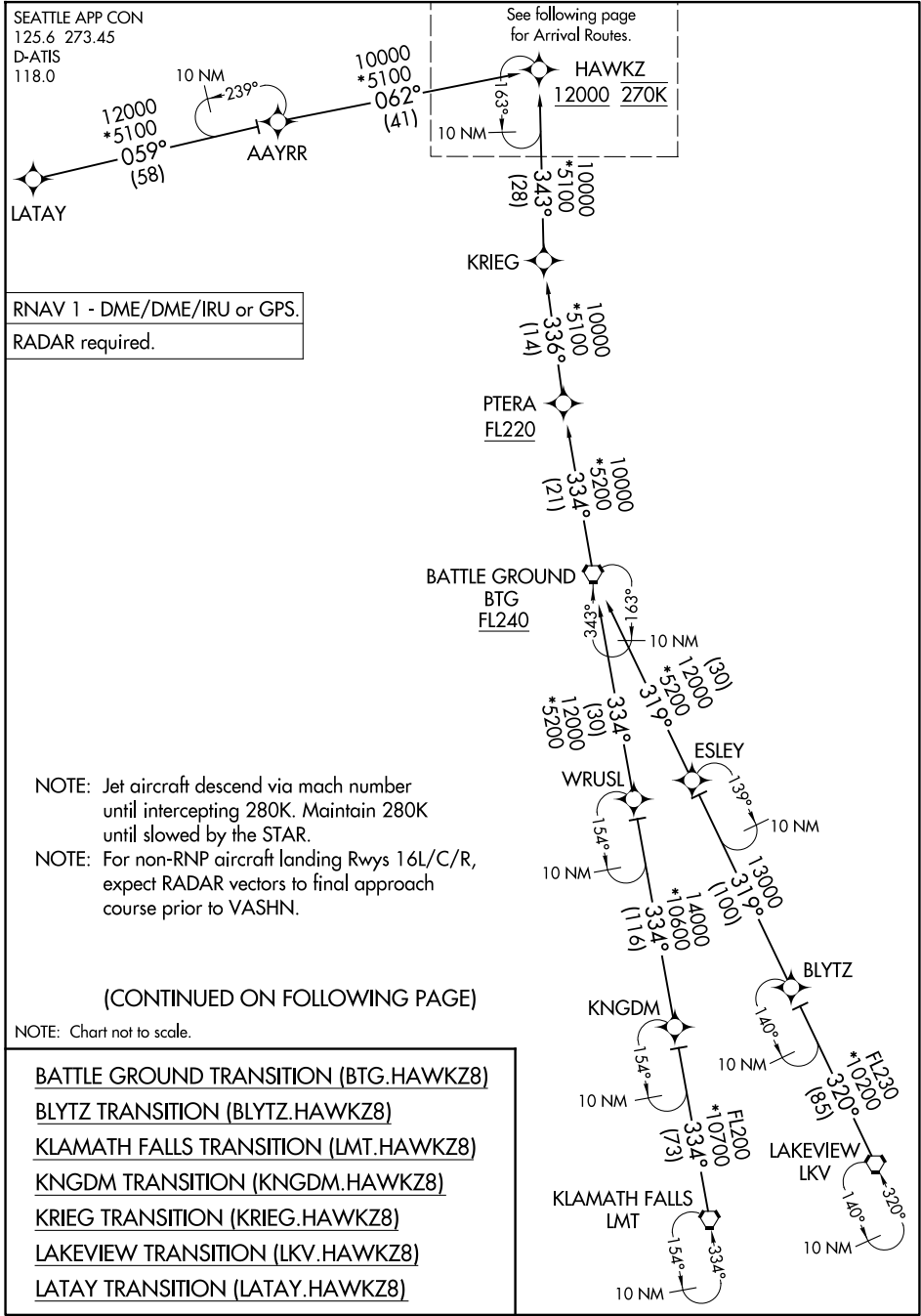


# HAWKZ EIGHT ARRIVAL (RNAV) Transition Routes



NW-1, 16 APR 2026 to 14 MAY 2026

NW-1, 16 APR 2026 to 14 MAY 2026

# HAWKZ EIGHT ARRIVAL (RNAV) Transition Routes

# HAWKZ EIGHT ARRIVAL (RNAV) Arrival Routes

## ARRIVAL ROUTE DESCRIPTION

From HAWKZ on track 023° to LIINE.

**LANDING RUNWAYS 16L/C/R:** From LIINE on track 022° to cross PIKEZ between 12000 and 15000 and at 250K, then on track 001° to COFAY, then on track 351° to cross BREVE between 10000 and 11000 and at 250K, then on track 350° to cross NETTZ at or above 8000 and at 230K, then on track 344° to cross VASHN at 6000 and at 210K, then on track 344°. Expect RADAR vectors for RNAV or ILS approach.

**LANDING RUNWAYS 34L/C/R:** From LIINE on track 027° to cross FOOT between 10000 and 12000 and at 250K, then on track 030° to cross GOALZ at or above 9000 and at 230K, then on track 014° to cross SONDR at 6000 and at 230K. Expect RNAV or ILS approach.

### LOST COMMUNICATIONS

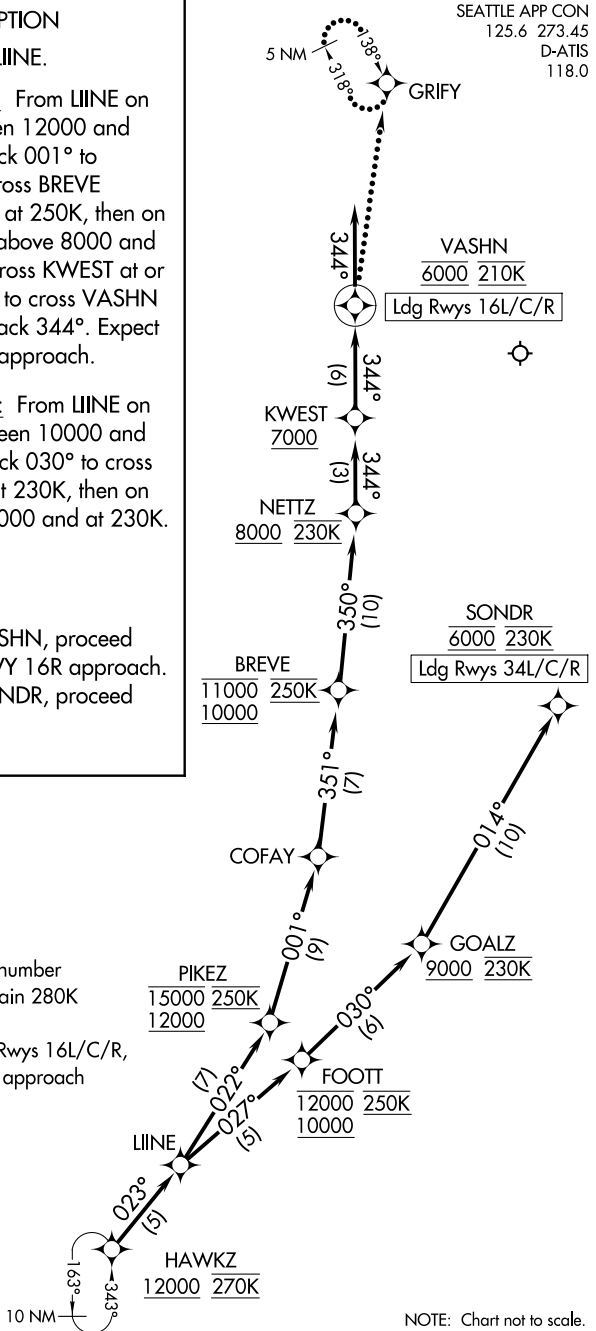
**LANDING RUNWAY 16:** At VASHN, proceed to GRIFY and then on the ILS RWY 16R approach.  
**LANDING RUNWAY 34:** At SONDR, proceed on the ILS RWY 34L approach.

RNAV 1 - DME/DME/IRU or GPS.

RADAR required.

NOTE: Jet aircraft descend via mach number until intercepting 280K. Maintain 280K until slowed by the STAR.

NOTE: For non-RNP aircraft landing Rwy 16L/C/R, expect RADAR vectors to final approach course prior to VASHN.



NOTE: Chart not to scale.

# HAWKZ EIGHT ARRIVAL (RNAV) Arrival Routes

NW-1, 16 APR 2026 to 14 MAY 2026

NW-1, 16 APR 2026 to 14 MAY 2026