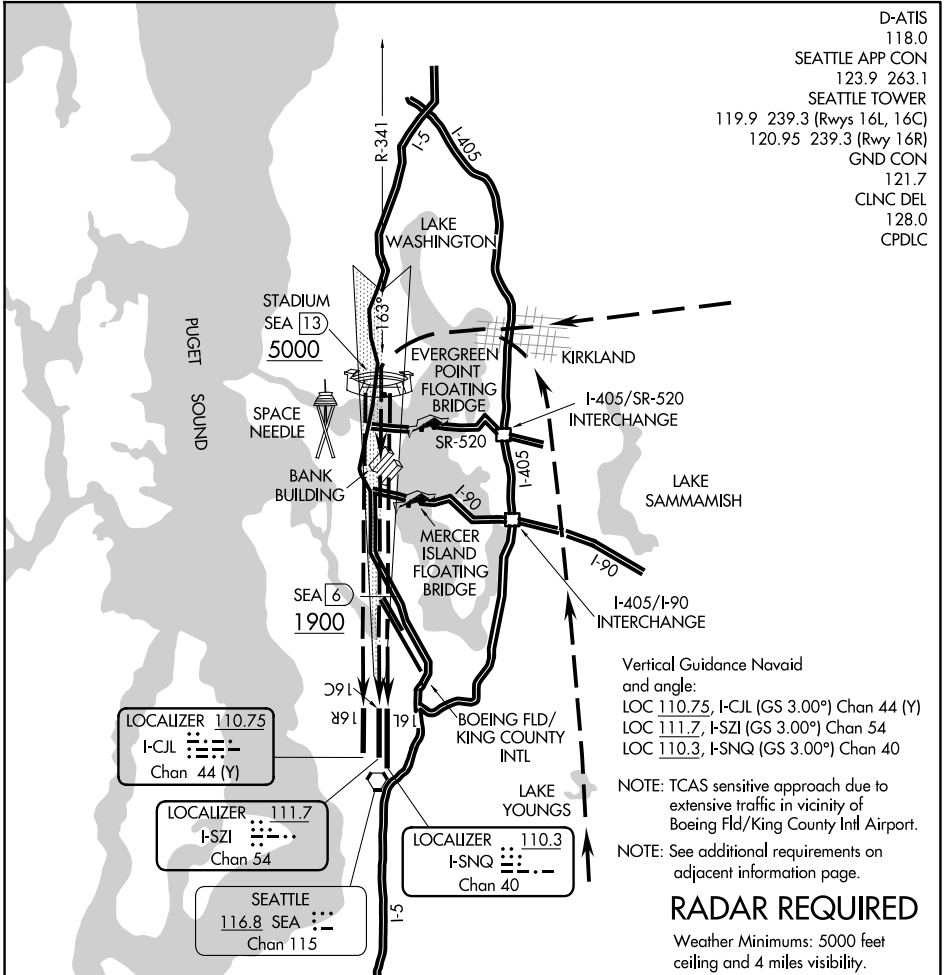


# HUSKY VISUAL RWY 16R/C/L

AL-582 (FAA)

SEATTLE-TACOMA INTL (SEA)  
SEATTLE, WASHINGTON

- D-ATIS 118.0
- SEATTLE APP CON 123.9 263.1
- SEATTLE TOWER 119.9 239.3 (Rwys 16L, 16C)
- 120.95 239.3 (Rwy 16R)
- GND CON 121.7
- CLNC DEL 128.0
- CPDLC



NW-1, 16 APR 2026 to 14 MAY 2026

NW-1, 16 APR 2026 to 14 MAY 2026

## HUSKY VISUAL APPROACH RWY 16R/C/L

When the ceiling is at least 5000' and visibility is at least 4 miles, aircraft may be vectored over Kirkland or Lake Youngs for a Husky Visual Runway 16R/C/L Approach. When cleared for a Husky Visual Approach; proceed inbound visually over Stadium (via route depicted); intercept the Runway 16R/C/L localizer/SEA R-341 at 13 DME and complete a straight in visual approach to the airport.

# HUSKY VISUAL RWY 16R/C/L

Amdt 5 10MAR11

47°27'N-122°19'W

SEATTLE, WASHINGTON  
SEATTLE-TACOMA INTL (SEA)

SEATTLE-TACOMA INTL AIRPORT

**ALERT NOTICE**

**ATTENTION ALL AIRCRAFT LANDING TO THE SOUTH:**

When transitioning from an instrument procedure to a visual approach to Runway 16C, verify that you are aligned for the intended landing Runway, not Taxiway Tango. Taxiway Tango is west and parallel to Runway 16C.

**TRANSITION TO VISUAL:**

Taxiway Tango has been mistaken for Runway 16C from the air during certain visibility conditions, i.e., wet runway, low sun angle reflections. Aircrews are advised to be aware of the proximity of the taxiway to Runway 16C and its runway-like appearance while on approach.

**RECOMMENDATION:**

Aircrews should use visual cues, e.g., approach lighting systems, REILs, when available, to confirm alignment with Runway 16C not Taxiway Tango. Additionally, it is recommended to track the localizer until the runway environment is visually verified.

NW-1, 16 APR 2026 to 14 MAY 2026

NW-1, 16 APR 2026 to 14 MAY 2026

