

LOC/DME I-SZI 111.7 Chan 54	APP CRS 164°	Rwy Ldg TDZE 430 Apt Elev 432
---	------------------------	---

ILS RWY 16C (CAT II & III)

SEATTLE-TACOMA INTL (SEA)

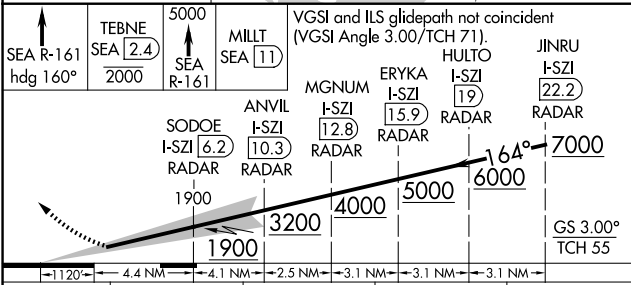
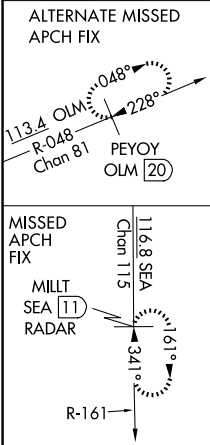
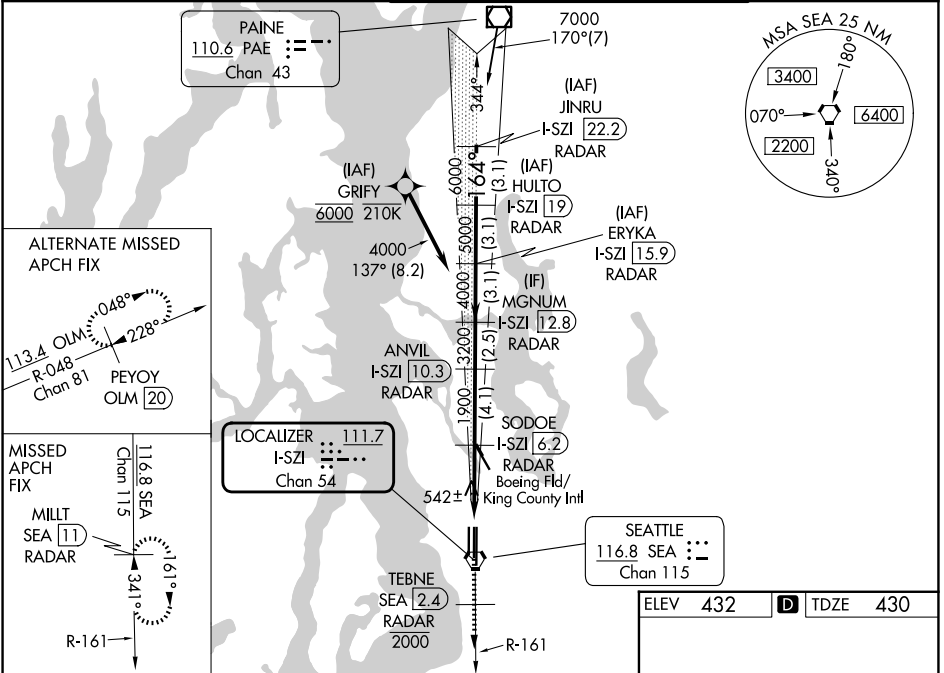
DME or RADAR required. From GRIFY:RNAV 1-GPS required.

Simultaneous approach authorized with Rwy 16R. Simultaneous operations require use of vertical guidance, maintain last assigned altitude until established on glideslope. Cat II: RVR 1000 authorized with specific OPSPEC, MSPEC, or LOA approval and use of Autoland or HUD to touchdown.

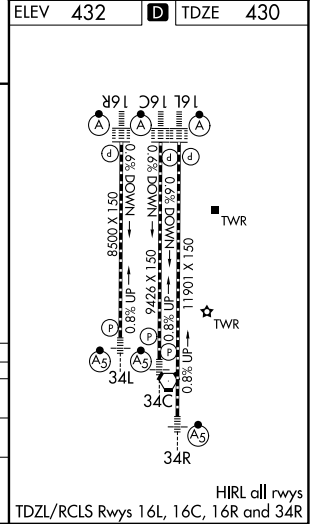
ALSF-2

MISSED APPROACH: Climb on heading 160° and SEA VORTAC R-161 to cross TEBNE/SEA 2.4 DME/RADAR at or below 2000, then climb to 5000 on SEA VORTAC R-161 to MILLT/SEA 11 DME/RADAR and hold, continue climb-in-hold to 5000.

D-ATIS 118.0	SEATTLE APP CON 133.65 273.45	SEATTLE TOWER 119.9 239.3 (16L, 16C, 34C, 34R) 120.95 239.3 (16R, 34L)	GND CON 121.7
------------------------	---	--	-------------------------



SEA R-161 hdg 160°	TEBNE SEA 2.4 2000	5000 SEA R-161	MILLT SEA 11	VGSi and ILS glidepath not coincident (VGSi Angle 3.00/TCH 71).			
	SODOE I-SZI 6.2 RADAR	ANVIL I-SZI 10.3 RADAR	MGNM I-SZI 12.8 RADAR	ERYKA I-SZI 15.9 RADAR	HULTO I-SZI 19 RADAR	JINRU I-SZI 22.2 RADAR	
							GS 3.00° TCH 55
CATEGORY	A	B	C	D			
S-ILS 16C	CAT II RA 126/12 100 DA 530						
S-ILS 16C	CAT III RVR 03						



NW-1, 16 APR 2026 to 14 MAY 2026

NW-1, 16 APR 2026 to 14 MAY 2026