

LOC/DME I-CJL 110.75 Chan 44(Y)	APP CRS 164°	Rwy Ldg TDZE Apt Elev	8500 415 432
--	------------------------	-----------------------------	---

ILS or LOC RWY 16R

SEATTLE-TACOMA INTL (SEA)

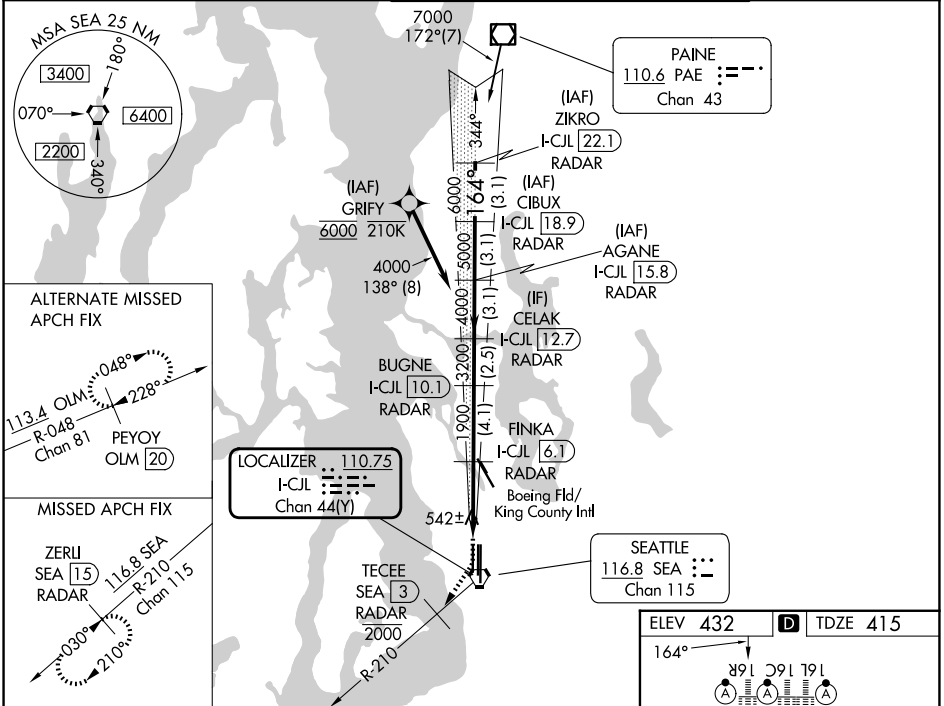
DME or RADAR required. From GRIFY: RNAV 1-GPS required.

Simultaneous approach authorized with Rwy 16L and 16C. Simultaneous operations require use of vertical guidance, maintain last assigned altitude until established on glideslope.

ALSF-2

MISSED APPROACH: Climb to 900 then climb on heading 195° and on SEA VORTAC R-210 to cross TECEE/SEA 3 DME/RADAR at or below 2000 then climb to 5000 on SEA VORTAC R-210 to ZERLI/SEA 15 DME/RADAR and hold, continue climb-in-hold to 5000.

D-ATIS 118.0	SEATTLE APP CON 133.65 273.45	SEATTLE TOWER 119.9 239.3 (16L, 16C, 34C, 34R) 120.95 239.3 (16R, 34L)	GND CON 121.7
------------------------	---	--	-------------------------



NW-1, 16 APR 2026 to 14 MAY 2026

NW-1, 16 APR 2026 to 14 MAY 2026

900 hdg 195° SEA R-210	TECEE SEA 3 2000	5000 SEA R-210	ZERLI SEA 15	VGSI and ILS glidepath not coincident (VGSI Angle 3.00/TCH 69).				ZIKRO I-CJL 22.1	
*LOC only				BUGNE I-CJL 10.1	AGANE I-CJL 15.8	CIBUX I-CJL 18.9	FINKA I-CJL 6.1	CELAK I-CJL 12.7	
CATEGORY	A	B	C	D					
S-ILS 16R	615/18			200 (200-½)					
S-LOC 16R	800/24	385 (400-½)	800/35	385 (400-¾)					
CIRCLING	1000-1	568 (600-1)	1000-1½	568 (600-½)	1000-2	568 (600-2)			
				TDZL/RCLS Rwy 16L, 16C, 16R and 34R FAF to MAP 4.5 NM					
				HIRL all rwy's Knots: 60 90 120 150 180 Min:Sec: 4:30 3:00 2:15 1:48 1:30					