

LOC/DME I-SEA 110.3 Chan 40	APP CRS 344°	Rwy Ldg 34R 34C TDZE 372 387 Apt Elev 432 432
---	------------------------	--

ILS or LOC RWY 34R

SEATTLE-TACOMA INTL (SEA)

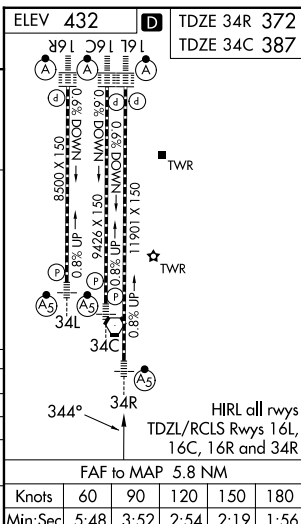
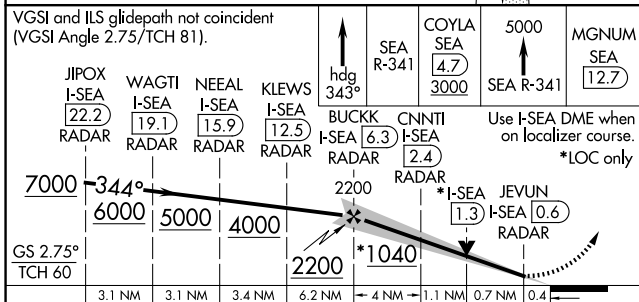
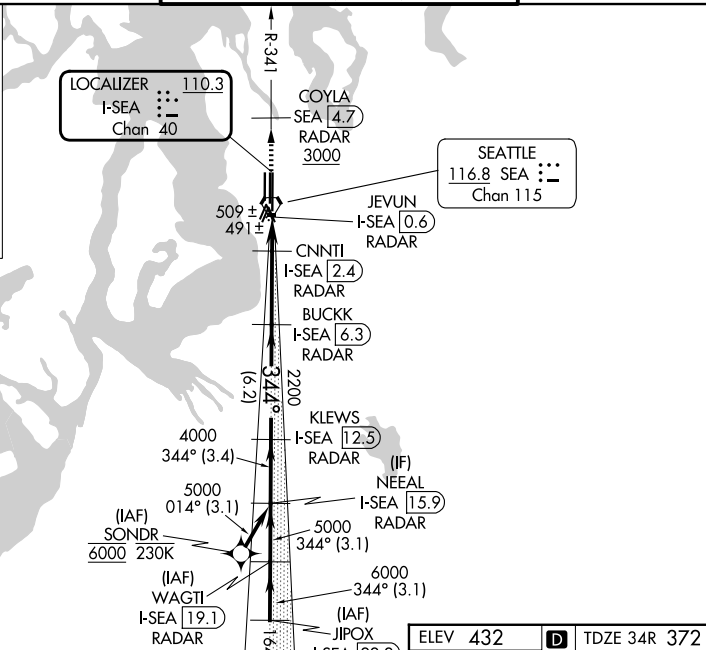
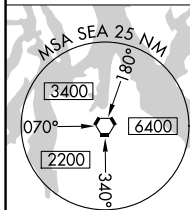
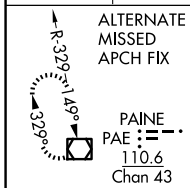
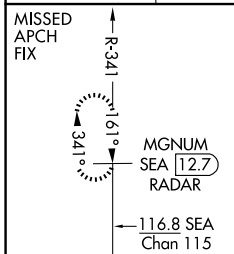
From SONDR: RNAV 1-GPS required.
DME or RADAR required.

MALS
Rwy 34R/C

MISSED APPROACH: Climb on heading 343° and outbound on SEA VORTAC R-341 to cross COYLA/SEA 4.7 DME/RADAR at or above 3000 then climb to 5000 on SEA VORTAC R-341 to MGNUM/SEA 12.7 DME/RADAR and hold, continue climb-in-hold to 5000.

Inop table does not apply to Sidestep 34C Cats A/B.
Simultaneous approach authorized with Rwy 34L.

D-ATIS 118.0	SEATTLE APP CON 133.65 273.45	SEATTLE TOWER 119.9 239.3 (16L, 16C, 34C, 34R) 120.95 239.3 (16R, 34L)	GND CON 121.7
------------------------	---	--	-------------------------



CATEGORY	A	B	C	D
S-ILS 34R	572/18 200 (200-½)			
S-LOC 34R	740/24	368 (400-½)	740/35	368 (400-¾)
SIDESTEP 34C	760/55 373 (400-1)		760-1½ 373 (400-1½)	
CIRCLING	1000-1 568 (600-1)		1000-1½ 568 (600-1½) 1000-2 568 (600-2)	

NW-1, 16 APR 2026 to 14 MAY 2026

NW-1, 16 APR 2026 to 14 MAY 2026