

APP CRS	Rwy Ldg	<b>8500</b>
<b>164°</b>	TDZE	<b>415</b>
	Apt Elev	<b>433</b>

# RNAV (RNP) Z RWY 16R

SEATTLE-TACOMA INTL (SEA)

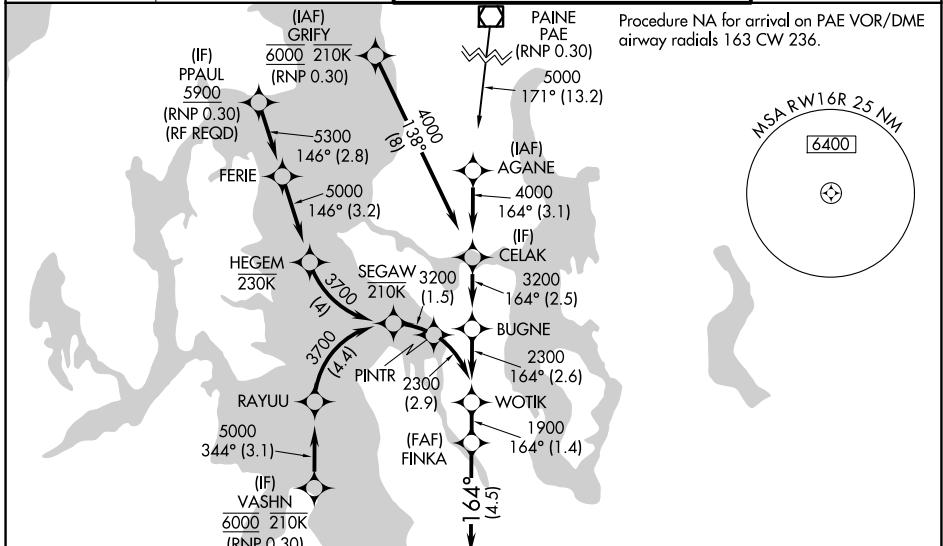
**▼** For uncompensated Baro-VNAV systems, procedure NA below -6°C (22°F) or above 54°C (130°F). Simultaneous approach authorized with Rwy 16L, except for arrivals at PPAUL and VASHN. GPS required. Use of FD or AP providing RNAV track guidance required during simultaneous operations. For inop ALS, increase RNP 0.15 all Cats visibility to RVR 5800, increase RNP 0.30 all Cats visibility to 1/2 SM.

ALSF-2

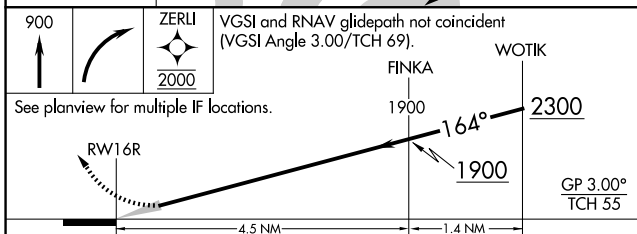
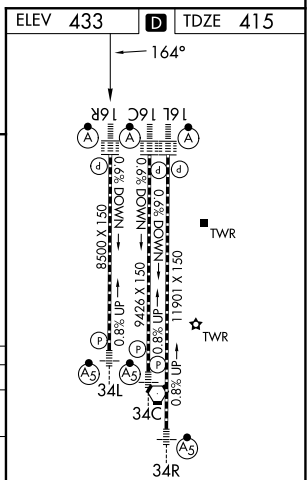


MISSED APPROACH: Climb to 900 then climbing right direct ZERLI to cross ZERLI at 2000 and hold.

D-ATIS	SEATTLE APP CON	SEATTLE TOWER	GND CON
<b>118.0</b>	<b>133.65 273.45</b>	<b>119.9 239.3</b> (16L, 16C, 34C, 34R) <b>120.95 239.3</b> (16R, 34L)	<b>121.7</b>



## RADAR REQUIRED



CATEGORY	A	B	C	D
RNP 0.15 DA		770/34	355 (400-5%)	
RNP 0.30 DA		854/50	439 (500-1)	

## AUTHORIZATION REQUIRED

HIRL all rwys  
TDZL/RCLS Rwy 16L, 16C, 16R and 34R

NW-1, 16 APR 2026 to 14 MAY 2026

NW-1, 16 APR 2026 to 14 MAY 2026