


RNAV (GPS) Y RWY 16R

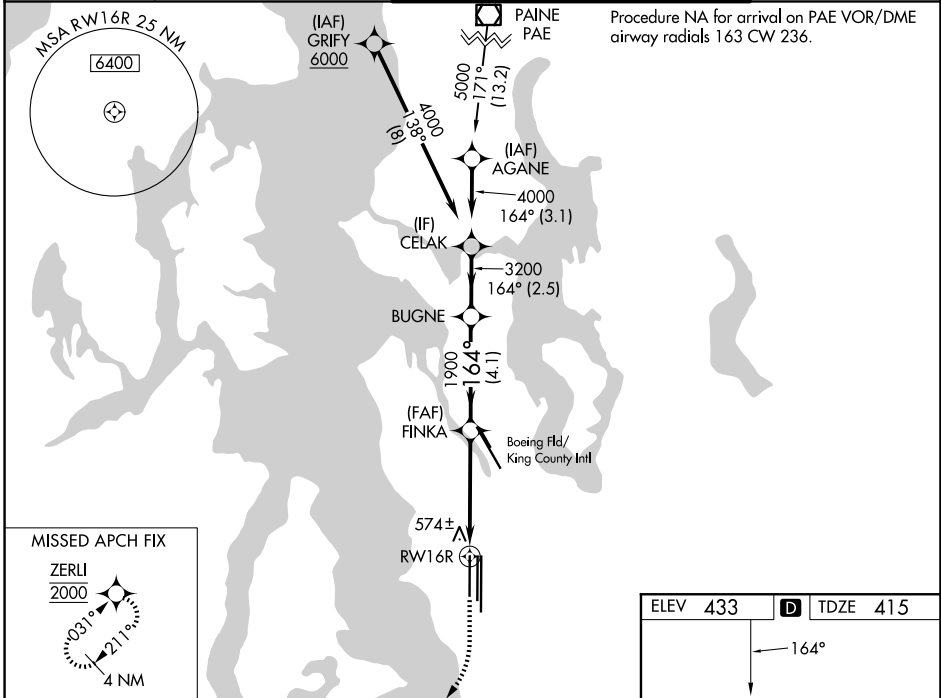
SEATTLE-TACOMA INTL (SEA)



WAAS CH 86910 W16D	APP CRS 164°	Rwy Ldg TDZE Apt Elev	8500 415 433
--	------------------------	-----------------------------	---

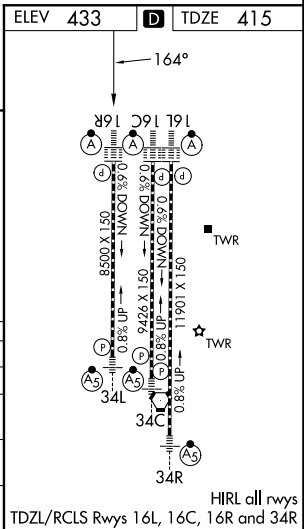
▼ For uncompensated Baro-VNAV systems, LNAV/VNAV NA below -6°C (22°F) or above 54°C (130°F). Simultaneous approach authorized with Rwy 16L. DME/DME RNP-0.3 NA. LNAV procedure NA during simultaneous operations. Use of FD or AP providing RNAV track guidance required during simultaneous operations.

ALSF-2
 MISSED APPROACH: Climb to 900 then climbing right turn direct ZERLI to cross ZERLI at 2000 and hold.

D-ATIS 118.0	SEATTLE APP CON 133.65 273.45	SEATTLE TOWER 119.9 239.3 (16L, 16C, 34C, 34R) 120.95 239.3 (16R, 34L)	GND CON 121.7
------------------------	---	--	-------------------------



  ZERLI 2000	VGSIs and RNAV glidepath not coincident (VGSIs Angle 3.00/TCH 69). CELAK 4000 BUGNE 3200 FINKA 1900
*LNAV only *1.2 NM to RW16R	GP 3.00° TCH 55
1.2 3.3 NM 4.1 NM 2.5 NM	1900 3200 4000
CATEGORY	A B C D
LPV DA	615/18 200 (200-½)
LNAV/VNAV DA	760/32 345 (400-⅝)
LNAV MDA	840/24 425 (500-½) 840/40 425 (500-¾)
CIRCLING	1000-1 567 (600-1) 1000-1½ 567 (600-1½) 1000-2 567 (600-2)



NW-1, 16 APR 2026 to 14 MAY 2026

NW-1, 16 APR 2026 to 14 MAY 2026