

| | | |
|--|------------------------|--|
| WAAS CH 42710 W34D | APP CRS 344° | Rwy Ldg 11901 TDZE 372 Apt Elev 433 |
|--|------------------------|--|

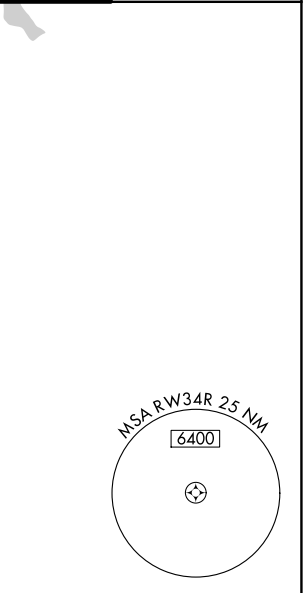
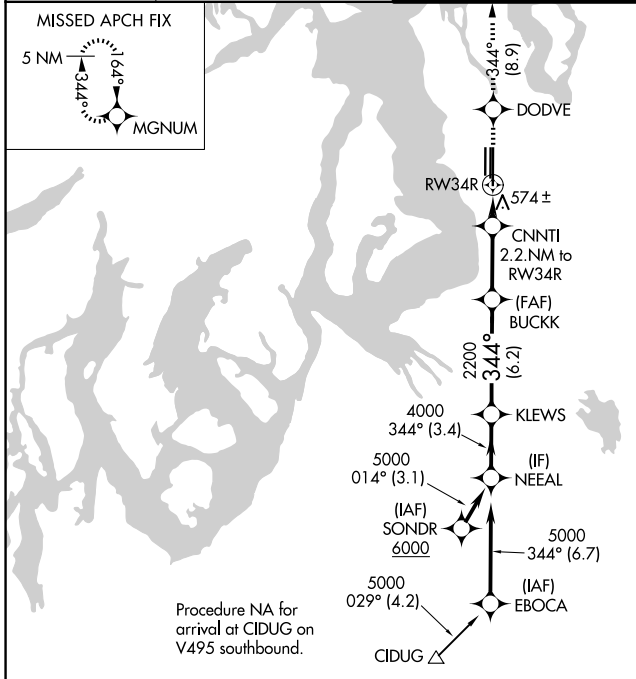
RNAV (GPS) Y RWY 34R

SEATTLE-TACOMA INTL (SEA)

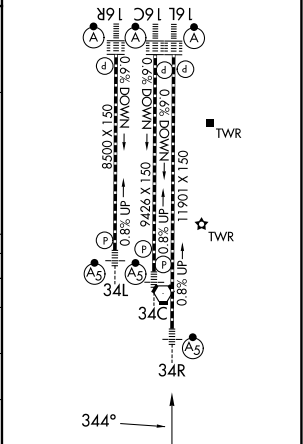
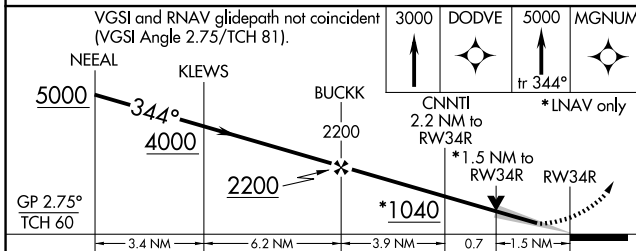
▼ DME/DME RNP-0.3 NA. For uncompensated Baro-VNAV systems, LNAV/VNAV NA below -6°C (22°F) or above 54°C (130°F). LNAV procedure NA during simultaneous operations. Use of FD or AP providing RNAV track guidance required during simultaneous operations. Simultaneous approach authorized with Rwy 34L. For nonoperative ALS, increase LNAV Cat C and D visibility to 1 3/8 SM. # RVR 1800 authorized with use of FD or AP or HUD to DA.

MALSR
MISSED APPROACH: Climb to 3000 direct DODVE then climb to 5000 on track 344° to MGNUM and hold, continue climb-in-hold to 5000.

| | | | |
|------------------------|---|--|-------------------------|
| D-ATIS 118.0 | SEATTLE APP CON 133.65 273.45 | SEATTLE TOWER 119.9 239.3 (16L, 16C, 34C, 34R) 120.95 239.3 (16R, 34L) | GND CON 121.7 |
|------------------------|---|--|-------------------------|



| | |
|---|-------------------|
| ELEV 433 | D TDZE 372 |
| HIRL all rwys TDZL/RCLS Rwys 16L, 16C, 16R and 34R | |



| | | | | |
|--------------|--------|---------------|-------------------------------|-----------------------|
| CATEGORY | A | B | C | D |
| LPV DA# | | 572/24 | 200 (200-1/2) | |
| LNAV/VNAV DA | | 915-1 1/2 | 543 (500-1 1/2) | |
| LNAV MDA | 840/24 | 468 (500-1/2) | 840/50 | 468 (500-1) |
| CIRCLING | 1000-1 | 567 (600-1) | 1000-1 1/2 567 (600-1 1/2) | 1000-2 567 (600-2) |

NW-1, 16 APR 2026 to 14 MAY 2026

NW-1, 16 APR 2026 to 14 MAY 2026