

(SEA1.SEA) 25331

# SEATTLE ONE DEPARTURE

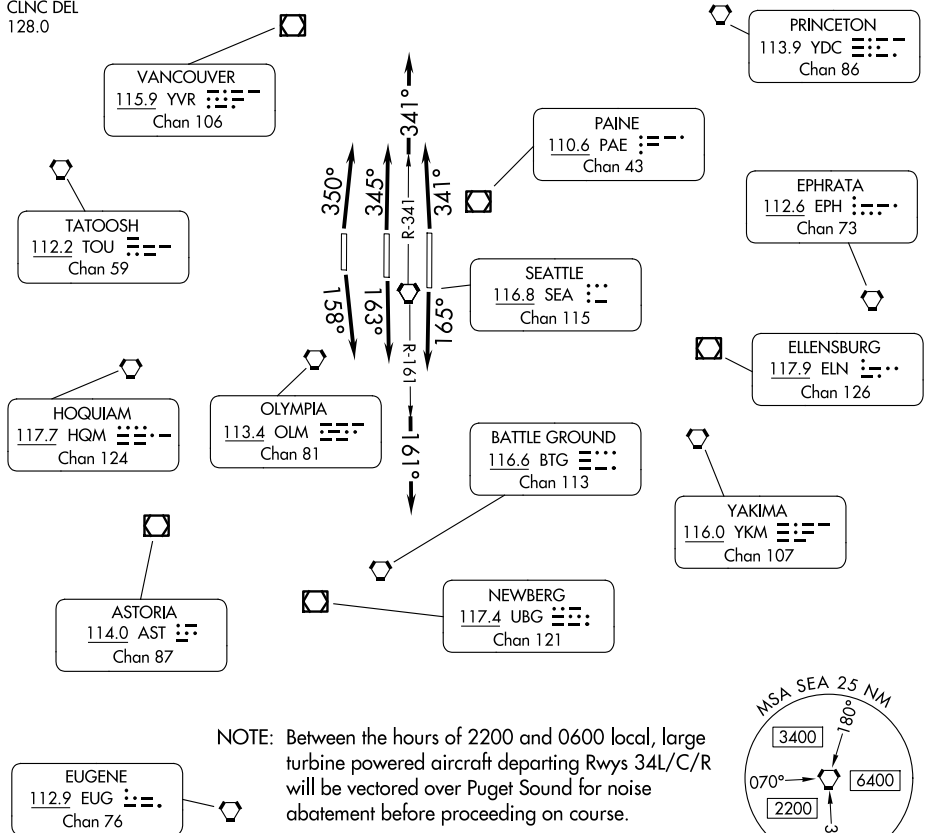
AL-582 (FAA)

SEATTLE-TACOMA INTL (SEA)  
SEATTLE, WASHINGTON

SEATTLE DEP CON  
119.2 284.7  
D-ATIS  
118.0  
CLNC DEL  
128.0

**TOP ALTITUDE:  
ASSIGNED BY ATC**

RADAR required.

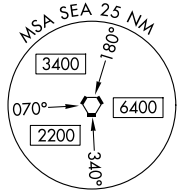


NOTE: Between the hours of 2200 and 0600 local, large turbine powered aircraft departing Rwy 34L/C/R will be vectored over Puget Sound for noise abatement before proceeding on course.

### TAKEOFF MINIMUMS

Rwys 16C, 34L, 34C, 34R: Standard.  
Rwy 16L: 300-1 or standard with minimum climb of 425'/NM to 600.  
Rwy 16R: 300-1¼ or standard with minimum climb of 215'/NM to 600.

NOTE: Chart not to scale.



### DEPARTURE ROUTE DESCRIPTION

**TAKEOFF RUNWAY 16L:** Climb on heading 165° and on SEA R-161, thence. . . .

**TAKEOFF RUNWAY 16C:** Climb on heading 163° and on SEA R-161, thence. . . .

**TAKEOFF RUNWAY 16R:** Climb on heading 158° and on SEA R-161, thence. . . .

**TAKEOFF RUNWAY 34L:** Climb on heading 350° and on SEA R-341, thence. . . .

**TAKEOFF RUNWAY 34C:** Climb on heading 345° and on SEA R-341, thence. . . .

**TAKEOFF RUNWAY 34R:** Climb on heading 341° and on SEA R-341, thence. . . .

. . . . expect RADAR vectors to assigned route. Maintain ATC assigned altitude, expect requested altitude 15 NM after SEA.

# SEATTLE ONE DEPARTURE

(SEA1.SEA) 27NOV25

SEATTLE, WASHINGTON  
SEATTLE-TACOMA INTL (SEA)

NW-1, 16 APR 2026 to 14 MAY 2026

NW-1, 16 APR 2026 to 14 MAY 2026