

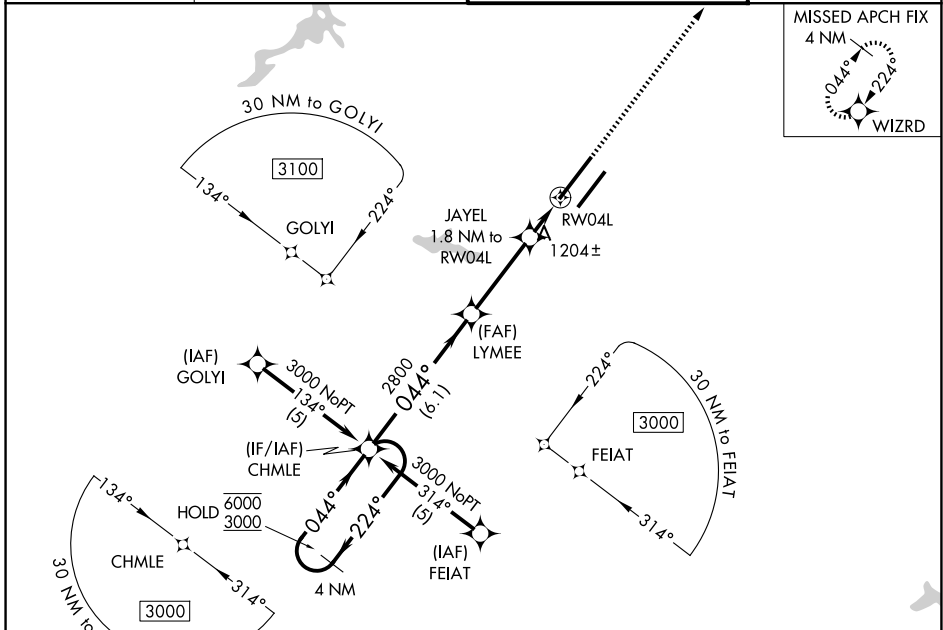
WAAS CH <b>62914</b> <b>W04A</b>	APP CRS <b>044°</b>	Rwy Ldg TDZE Apt Elev	<b>10701</b> <b>1057</b> <b>1077</b>
--	------------------------	-----------------------------	--

# RNAV (GPS) RWY 4L

WILMINGTON AIR PARK (ILN)

RNP APCH - GPS.	MALSR 	MISSED APPROACH: Climb to 3000 direct WIZRD and hold.
<p><b>⚠</b> For uncompensated Baro-VNAV systems, LNAV/VNAV NA below -17°C or above 54°C.  <b>⚠</b> For inop ALS, increase LNAV Cats A/B visibility to RVR 5500 and LNAV Cats C/D visibility to RVR 6000. *1800 RVR authorized with use of FD or AP or HUD to DA.</p>		

D-ATIS <b>124.925</b>	COLUMBUS APP CON <b>118.85 269.275</b>	WILMINGTON TOWER <b>119.475</b>	GND CON <b>121.6</b>
--------------------------	---	------------------------------------	-------------------------



4 NM Holding Pattern		CHMLE	VGSI and RNAV glidepath not coincident (VGSI Angle 3.00/TCH 62).	3000	WIZRD
6000	← 224°	LYMEE JAYEL 1.8 NM to RW04L 2800 1680 1.1 NM to RW04L RW04L	GP 3.00° TCH 51	↑ WIZRD	
3000	→ 044°				
6.1 NM 3.5 NM 0.7 NM 1.1 NM					
CATEGORY	A	B	C	D	
LPV DA *	1257/24		200 (200-½)		
LNAV/VNAV DA	1505/45		448 (500-¾)		
LNAV MDA	1460/24	403 (400-½)	1460/40	403 (400-¾)	
CIRCLING	1560-1	483 (500-1)	1860-2¼ 783 (800-2¼)	1860-2½ 783 (800-2½)	

