

LOC/DME I-HNQ <b>108.75</b> Chan <b>24(Y)</b>	APP CRS <b>174°</b>	Rwy Ldg TDZE <b>5997</b> <b>1073</b> Apt Elev <b>1073</b>
-----------------------------------------------------	------------------------	--------------------------------------------------------------------

# ILS or LOC RWY 17

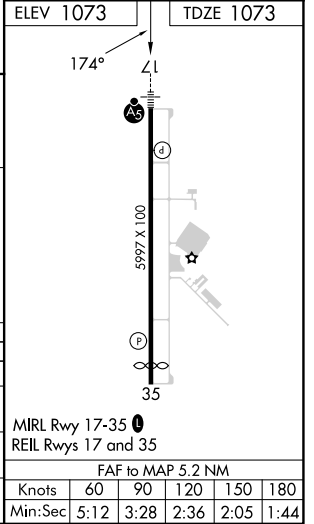
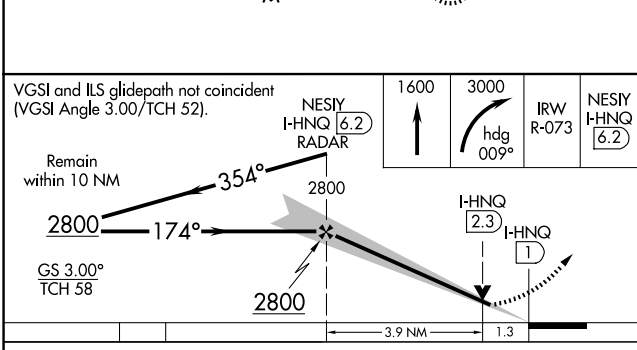
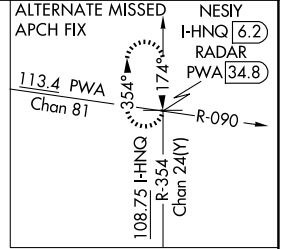
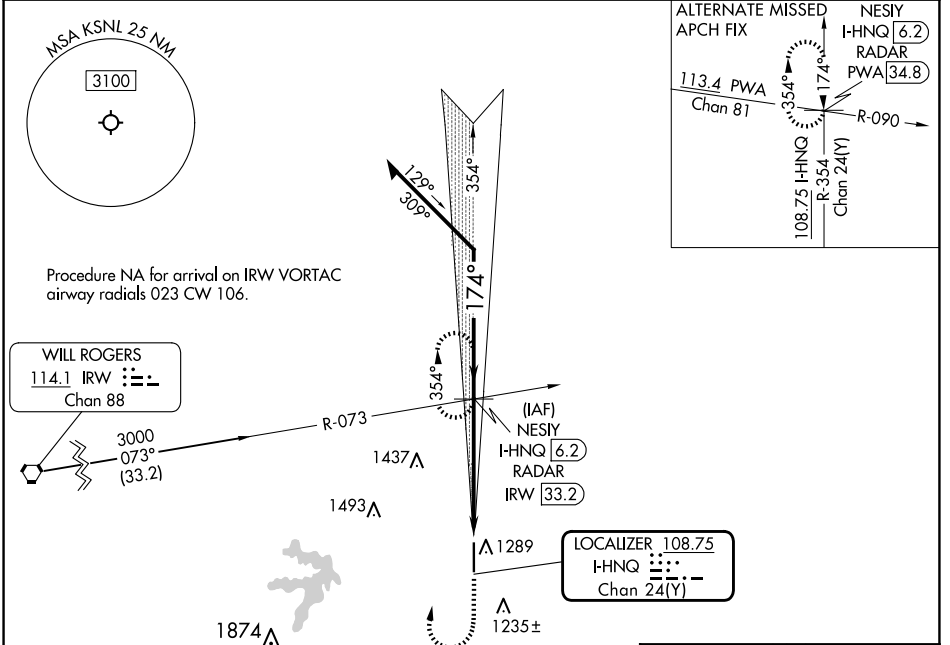
SHAWNEE RGNL (SNL)

DME or RADAR required.

MALSRL

MISSED APPROACH: Climb to 1600 then climbing right turn to 3000 on heading 009° and IRW R-073 to NESIY/I-HNQ 6.2 DME/RADAR and hold, continue climb-in-hold to 3000.

AWOS-3PT <b>118.275</b>	OKE CITY APP CON <b>120.45 288.325</b>	UNICOM <b>122.7 (CTAF)</b>
----------------------------	-------------------------------------------	-------------------------------



CATEGORY	A	B	C	D
S-ILS 17	1273-1/2 200 (200-1/2)			NA
S-LOC 17	1520-1/2	447 (500-1/2)	1520-7/8 447 (500-7/8)	NA
CIRCLING	1600-1 527 (600-1)		1640-1/2 567 (600-1/2)	NA

SC-1, 16 APR 2026 to 14 MAY 2026

SC-1, 16 APR 2026 to 14 MAY 2026