

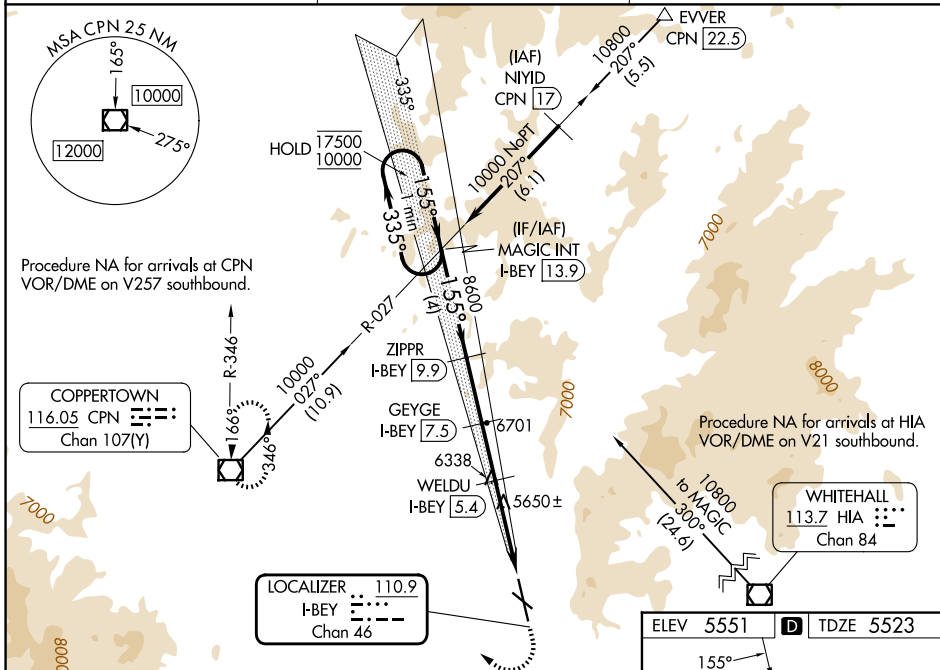
LOC/DME I-BEY 110.9 Chan 46	APP CRS 155°	Rwy Ldg 9000 TDZE 5523 Apt Elev 5551
---	------------------------	---

ILS or LOC RWY 15

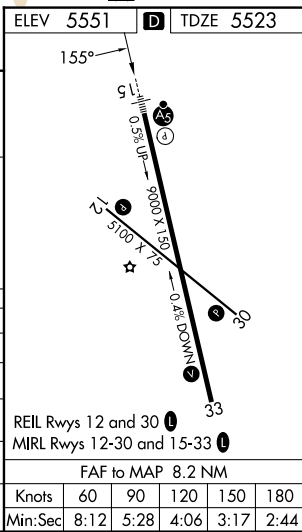
BERT MOONEY (BTM)

DME required.	MALSR	MISSED APPROACH: (Do not exceed 190K until 7100) Climb to 7100 then climbing right turn to 11000 direct CPN VOR/DME and hold, continue climb-in-hold to 11000. *Missed approach requires minimum climb of 365 feet per NM to 8700.
<p>⚠ Circling NA northeast of Rwy 15-33. For inop ALS, increase *S-ILS 15 Cat C and D visibility to 1 SM. ⚠ S-ILS 15 all Cats visibility to 2 1/2 SM, and *S-LOC 15 Cats C and D visibility to 1 3/8 SM. ❄ -24°C</p>		

ASOS 135.175	SALT LAKE CENTER 132.4 338.3	UNICOM 123.0 (CTAF) 0
------------------------	--	---------------------------------



One Minute Holding Pattern	MAGIC INT I-BEY 13.9	ZIPPR I-BEY 9.9	GEYGE I-BEY 7.5	7100	11000	CPN
	17500 ← 335°	8600	8600	7700	6920	1.7
GS 3.50° TCH 55	10000	8600	7700	6920	5.4	3
	4 NM	2.4 NM	2.1 NM	2.4 NM	1.2	
CATEGORY	A	B	C	D		
S-ILS 15*	5778-1/2	255 (300-1/2)	5848-1/2	325 (300-1/2)		
S-ILS 15	6280-1 7/8		757 (800-1 7/8)			
S-LOC 15*	6020-1/2	497 (500-1/2)	6020-1	497 (500-1)		
S-LOC 15	6500-3/4 977 (1000-3/4)	6500-1 977 (1000-1)	6500-2 1/2	977 (1000-2 1/2)		
CIRCLING	6660-1 1/4 1109 (1200-1 1/4)	6660-1 1/2 1109 (1200-1 1/2)	7060-3 1509 (1600-3)	7120-3 1569 (1600-3)		



NW-1, 16 APR 2026 to 14 MAY 2026

NW-1, 16 APR 2026 to 14 MAY 2026

REIL Rwy 12 and 30	MIRL Rwy 12-30 and 15-33
FAF to MAP 8.2 NM	
Knots	60 90 120 150 180
Min:Sec	8:12 5:28 4:06 3:17 2:44