

(IYEFF1.IYEFF) 25331

# IYEFF ONE DEPARTURE (RNAV)

AL-590 (FAA)

IDAHO FALLS RGNL (IDA)

IDAHO FALLS, IDAHO

**TOP ALTITUDE:  
ASSIGNED BY ATC**

RNAV 1 - DME/DME/IRU or GPS.

RADAR required for non-GPS equipped aircraft.

SALT LAKE CENTER

128.35 239.25

CLINC DEL

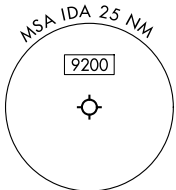
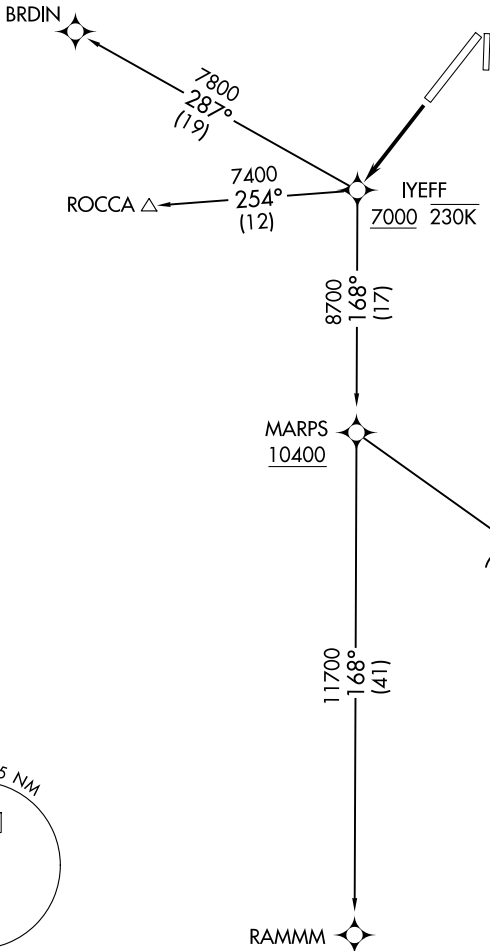
121.7

GND CON

121.7

IDAHO FALLS TOWER \*

118.5 (CTAF) 257.8



### TAKEOFF MINIMUMS

Rwy 17: NA - Environmental.

Rwy 21: Standard.

NOTE: Chart not to scale.

### DEPARTURE ROUTE DESCRIPTION

**TAKEOFF RUNWAY 21:** Climb direct to cross IYEFF at or above 7000 at or below 230K, then on transition. Maintain ATC assigned altitude. Expect filed altitude 10 minutes after departure.

BRDIN TRANSITION (IYEFF1.BRDIN)

RAMMM TRANSITION (IYEFF1.RAMMM)

ROCCA TRANSITION (IYEFF1.ROCCA)

SHEMA TRANSITION (IYEFF1.SHEMA)

# IYEFF ONE DEPARTURE (RNAV)

(IYEFF1.IYEFF)

27NOV25

IDAHO FALLS, IDAHO  
IDAHO FALLS RGNL (IDA)

NW-1, 16 APR 2026 to 14 MAY 2026

NW-1, 16 APR 2026 to 14 MAY 2026