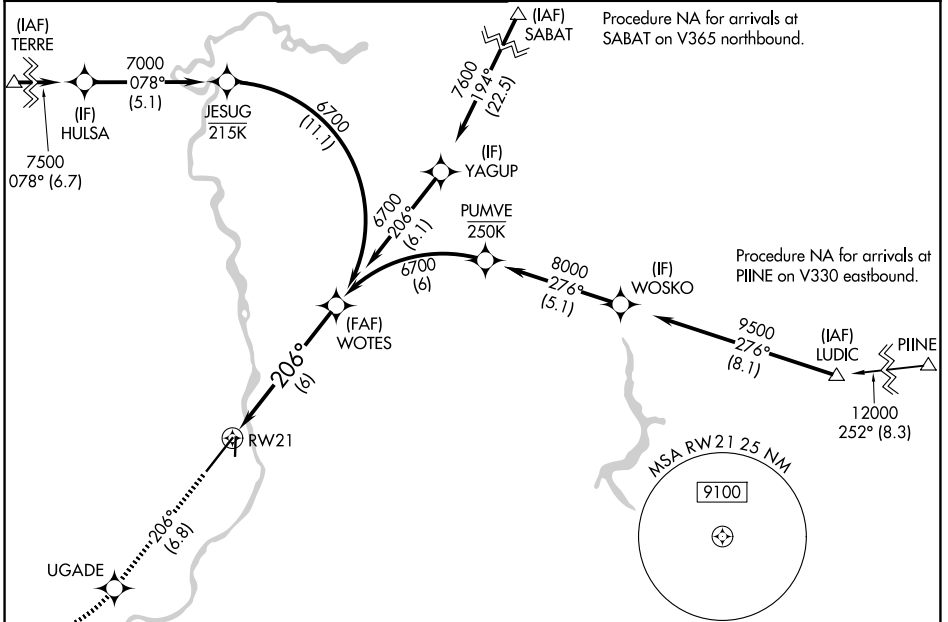


RNAV (RNP) Z RWY 21

IDAHO FALLS RGNL (IDA)

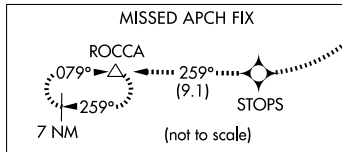
APP CRS	Rwy Ldg	9002
206°	TDZE	4735
	Apt Elev	4744

RNP AR APCH-GPS.		MALSR	MISSED APPROACH: Climb to 7500 on track 206° to UGADE, right turn to STOPS, and on track 259° to ROCCA and hold.			
For uncompensated Baro-VNAV systems, procedure NA below -27°C or above 54°C. For inop ALS, increase RNP 0.11 visibility all Cats to RVR 4500.			GND CON	CLNC DEL	GCO	UNICOM
ATIS	SALT LAKE CENTER	IDAHO FALLS TOWER *	121.7	121.7	121.725	122.95
135,325	128.35 239.25	118.5 (CTAF) 0 257.8				

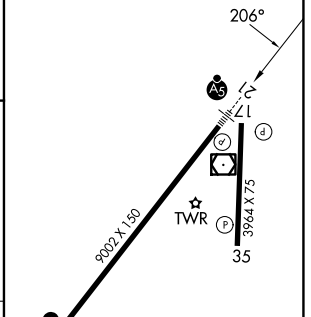
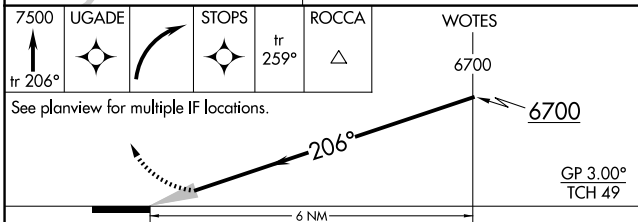


NW-1, 16 APR 2026 to 14 MAY 2026

NW-1, 16 APR 2026 to 14 MAY 2026



ELEV 4744	D TDZE 4735
-----------	--------------------



CATEGORY	A	B	C	D
RNP 0.11 DA		5011/24	276 (300-½)	
RNP 0.30 DA		5120/35	385 (400-¾)	

AUTHORIZATION REQUIRED

REIL Rwy 3 **1**

HIRL Rwy 3-21 **1**

MIRL Rwy 17-35