

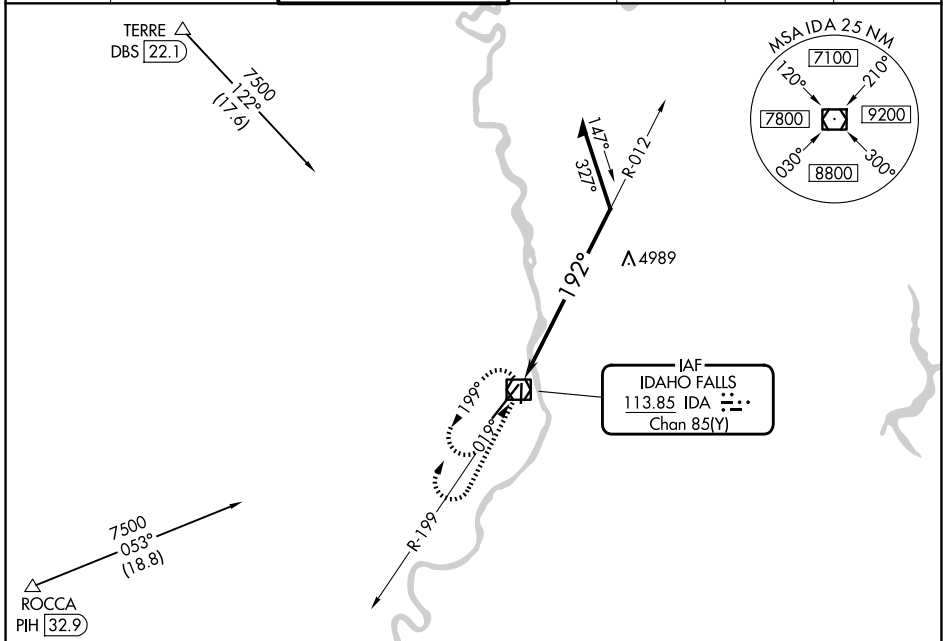
VOR/DME IDA <b>113.85</b> Chan <b>85</b> (Y)	APP CRS <b>192°</b>	Rwy Ldg TDZE Apt Elev	<b>9002</b> <b>4735</b> <b>4744</b>
--	------------------------	-----------------------------	---

# VOR RWY 21

IDAHO FALLS RGNL (IDA)

For inop ALS increase S-21 Cats C/D visibility to 1 1/8 SM.		MISSED APPROACH: Climb to 7000 then right turn direct IDA VOR/DME and hold.

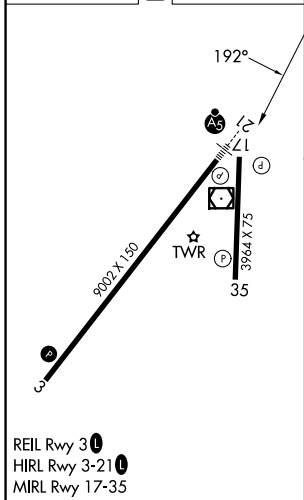
ATIS <b>135.325</b>	SALT LAKE CENTER <b>128.35 239.25</b>	IDAHO FALLS TOWER ★ <b>118.5</b> (CTAF) <b>0 257.8</b>	GND CON <b>121.7</b>	CLNC DEL <b>121.7</b>	GCO <b>121.725</b>	UNICOM <b>122.95</b>
------------------------	--	---	-------------------------	--------------------------	-----------------------	-------------------------



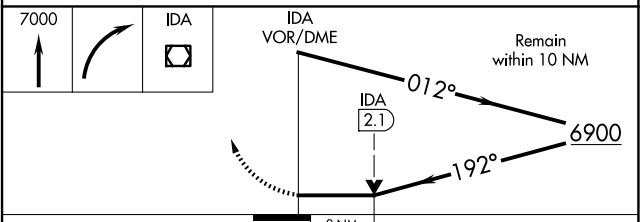
NW-1, 16 APR 2026 to 14 MAY 2026

NW-1, 16 APR 2026 to 14 MAY 2026

ELEV 4744	<b>D</b>	TDZE 4735
-----------	----------	-----------



REIL Rwy 3 **1**  
HIRL Rwy 3-21 **1**  
MIRL Rwy 17-35



CATEGORY	A	B	C	D
S-21	5400/24 665 (700-1/2)		5400-1 1/2 665 (700-1 1/2)	
CIRCLING	5400-1 656 (700-1)		5400-1 7/8 656 (700-1 7/8)	5420-2 1/4 676 (700-2 1/4)