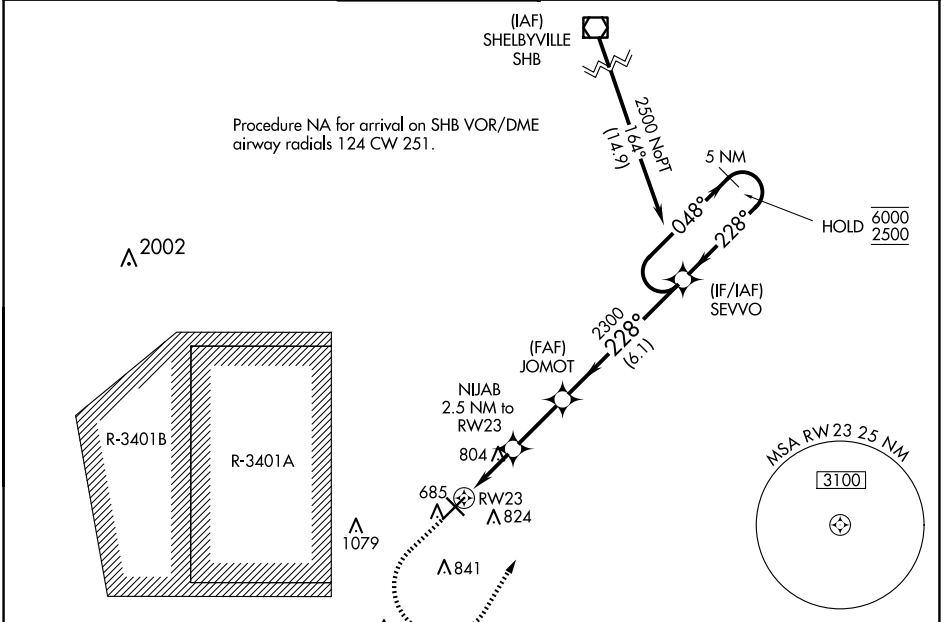


WAAS CH <b>90399</b> <b>W23A</b>	APP CRS <b>228°</b>	Rwy Ldg TDZE <b>656</b> Apt Elev <b>656</b>	<b>6401</b>
--	------------------------	---	-------------

# RNAV (GPS) RWY 23

COLUMBUS MUNI (BAK)

RNP APCH - GPS.		MALSR		MISSED APPROACH: Climb to 1200, then climbing left turn to 2500 direct SEVVO and hold.	
For inop ALS, increase LNAV Cat C/D visibility to 1½ SM.					
AWOS-3 <b>119.75</b>	INDIANAPOLIS APP CON <b>134.85 317.8</b>	COLUMBUS TOWER ★ <b>118.6</b> (CTAF)	GND CON <b>121.6</b>	CLNC DEL <b>134.85</b> (When twr closed)	UNICOM <b>122.95</b>



ELEV 656		TDZE 656
----------	--	----------

1200	2500	SEVVO
------	------	-------

CATEGORY	A	B	C	D
LPV DA	906-½ 250 (300-½)			
LNAV MDA	1060-½ 404 (500-½)		1060-¾ 404 (500-¾)	

MIRL Rwy 14-32
HIRL Rwy 5-23
REIL Rws 5, 14, and 32

EC-2, 16 APR 2026 to 14 MAY 2026

EC-2, 16 APR 2026 to 14 MAY 2026