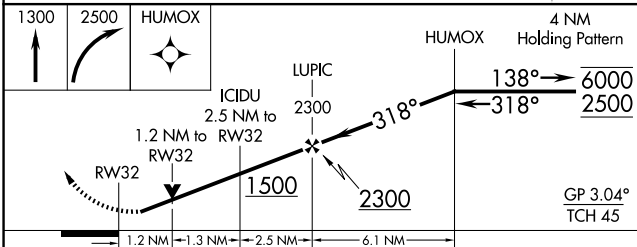
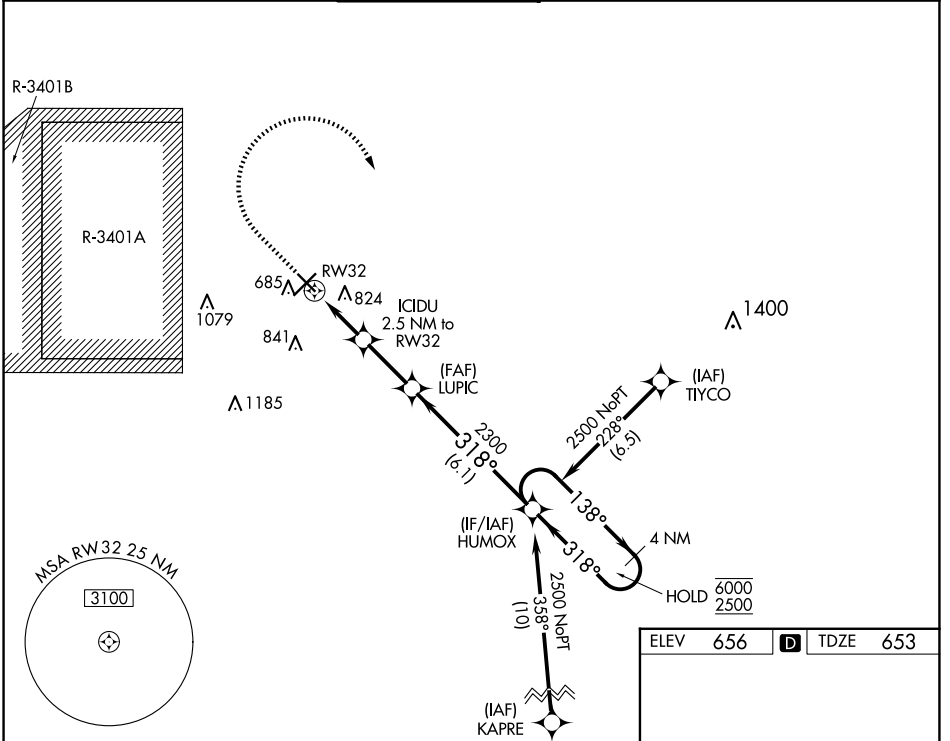


WAAS CH 50399 W32A	APP CRS 318°	Rwy Ldg TDZE Apt Elev	5000 653 656
--	------------------------	-----------------------------	---

RNAV (GPS) RWY 32

COLUMBUS MUNI (BAK)

RNP APCH - GPS.		MISSED APPROACH: Climb to 1300, then climbing right turn to 2500 direct HUMOX and hold.	
<p>▼ Rwy 32 helicopter visibility reduction below 3/4 SM NA. For uncompensated Baro-VNAV systems, LNAV/VNAV NA below -16°C or above 54°C.</p>			
AWOS-3 119.75	INDIANAPOLIS APP CON 134.85 317.8	COLUMBUS TOWER ★ 118.6 (CTAF) 0	GND CON 121.6
		CLNC DEL 134.85 (When twr closed)	UNICOM 122.95



CATEGORY	A	B	C	D
LPV DA		903-1	250 (300-1)	
LNAV/VNAV DA		1056-1 1/8	403 (400-1 1/8)	
LNAV MDA	1080-1	427 (500-1)	1080-1 1/4	427 (500-1 1/4)

ELEV 656	D TDZE 653
----------	-------------------

The crosswind indicator shows a wind direction of 318° and a speed of 32 knots. The diagram also indicates the runway heading of 318° and the crosswind component of 32 knots. The runway width is 3000 x 100 ft. The diagram also shows the runway number 32 and the runway symbol.

MIRL Rwy 14-32 **1**
 HIRL Rwy 5-23 **1**
 REIL Rws 5, 14, and 32 **1**

EC-2, 16 APR 2026 to 14 MAY 2026

EC-2, 16 APR 2026 to 14 MAY 2026