

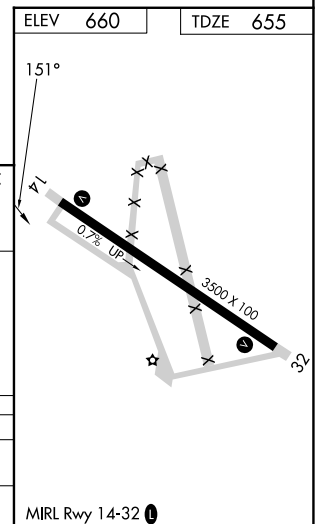
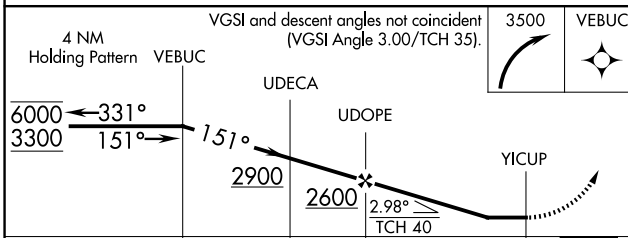
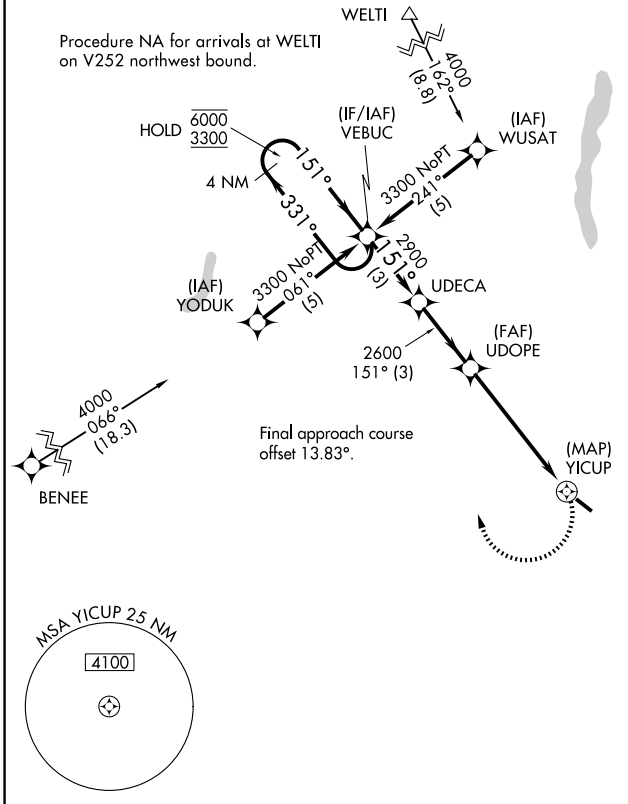
APP CRS	Rwy Ldg	3500
151°	TDZE	655
	Apt Elev	660

RNAV (GPS) RWY 14

DANVILLE MUNI (DSV)

RNP APCH - GPS.	<p>MISSED APPROACH: Climbing right turn to 3500 direct VEBUC and hold.</p>
<p>Procedure NA at night. Rwy 14 helicopter visibility reduction below 1 SM NA.</p>	

ASOS 118.325	ROCHESTER APP CON 123.7 322.3	UNICOM 123.0 (CTAF) 0
------------------------	---	---------------------------------



CATEGORY	A	B	C	D
RNAV MDA	1840-1¼ 1185 (1200-1¼)	1840-1½ 1185 (1200-1½)	1840-3 1185 (1200-3)	NA
CIRCLING	1940-1¼ 1280 (1300-1¼)	2120-1½ 1460 (1500-1½)	2220-3 1560 (1600-3)	NA

NE-2, 16 APR 2026 to 14 MAY 2026

NE-2, 16 APR 2026 to 14 MAY 2026