

APP CRS	Rwy Ldg	N/A
343°	TDZE	N/A
	Apt Elev	660

RNAV (GPS)-A

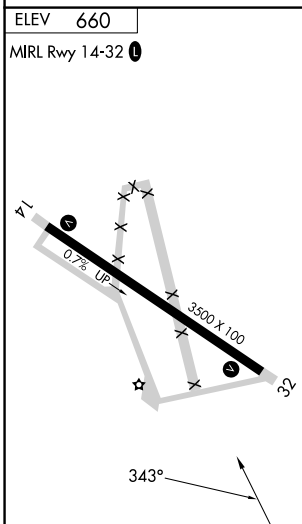
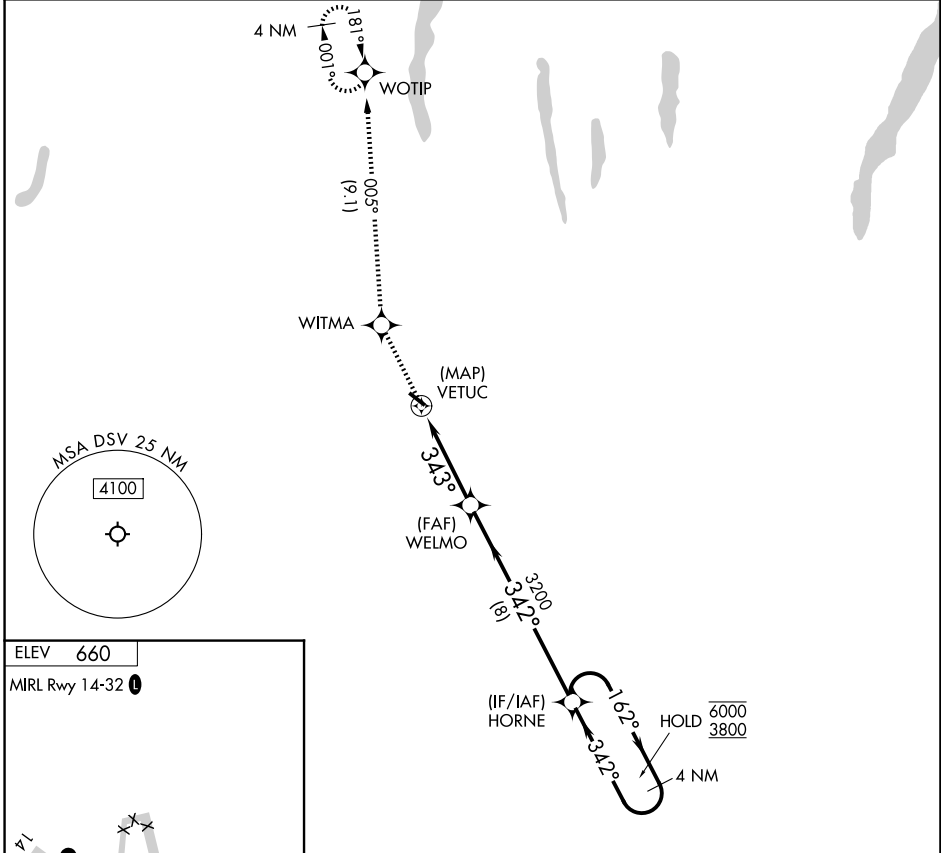
DANVILLE MUNI (DSV)

RNP APCH - GPS.

▼ Procedure NA at night.
 ▲ Rwy 14, 32 helicopter visibility reduction below 1 SM NA.

MISSED APPROACH: Climb to 3300 direct WITMA and on 005° track to WOTIP and hold.

ASOS 118.325	ROCHESTER APP CON 123.7 322.3	UNICOM 123.0 (CTAF) 0
------------------------	---	---------------------------------



3300	WITMA	tr 005°	WOTIP	HORNE	4 NM Holding Pattern
				162° → 6000	← 342° 3800
			WELMO		
			343°	3200	
	4 NM		8 NM		
CATEGORY	A	B	C	D	
CIRCLING	1940-1¼ 1280 (1300-1¼)	2120-1½ 1460 (1500-1½)	2220-3 1560 (1600-3)	NA	

NE-2, 16 APR 2026 to 14 MAY 2026