


LOC I-PIA 109.9	APP CRS 309°	Rwy Ldg 10104 TDZE 650 Apt Elev 661
---------------------------	------------------------	--

ILS or LOC RWY 31

GENERAL DOWNING - PEORIA INTL (PIA)

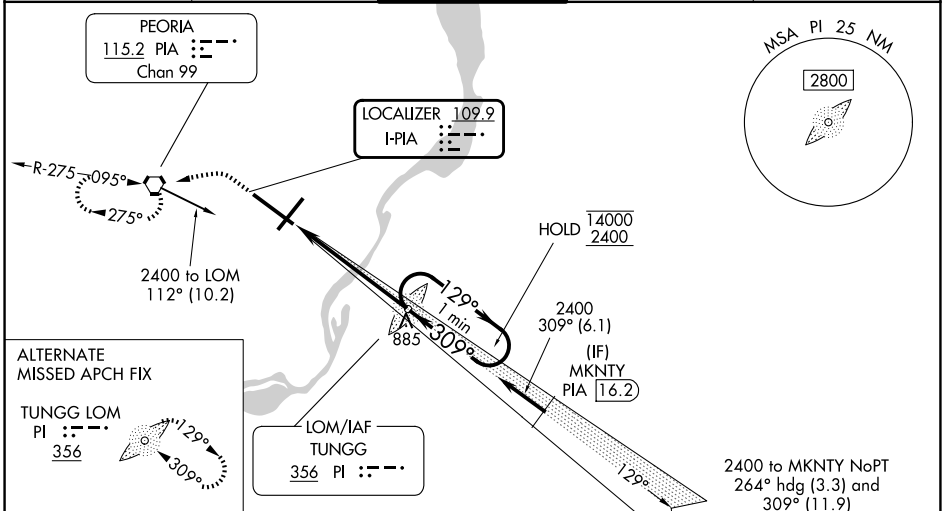
DME required for procedure entry.

⚠ When local altimeter setting not received, use AAA altimeter setting: increase S-ILS 31 DA to 939 feet; increase all MDAs 100 feet and S-LOC 31 visibility CAT C/D/E to 1 1/4 SM and Circling visibility Cat C 1/4 SM and Cat D 1/2 SM. Circling Rwy 13, 31 NA at night. For inop ALS, when using AAA altimeter setting, increase S-ILS 31 all Cats visibility to RVR 4500, S-LOC 31 visibility Cats C/D/E to 1 1/2 SM. For inop ALS, increase S-ILS 31 Cat E visibility to RVR 4000 and S-LOC 31 Cats C/D/E to 1 1/2 SM. DME from PIA VORTAC. DME use requires simultaneous reception of I-PIA and PIA DME. * RVR 1800 authorized with the use of FD or AP or HUD to DA. (NA when using AAA altimeter setting).

MALSR 

MISSED APPROACH: Climb to 1200 then climbing left turn to 2400 direct PIA VORTAC and hold, continue climb-in-hold to 2400.

ATIS 126.1 282.2	SAINT LOUIS APP CON 125.8 269.2	PEORIA TOWER 124.0 353.85	GND CON 121.85 348.6	CLNC DEL 124.675 317.55
----------------------------	---	-------------------------------------	--------------------------------	-----------------------------------

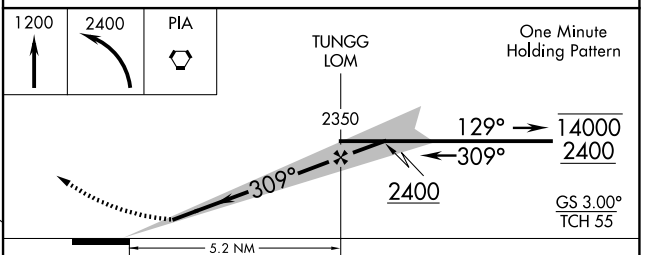
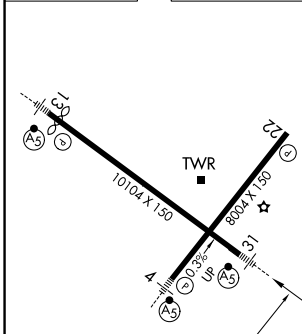


ALTERNATE MISSED APCH FIX

TUNGG LOM
PI 356

LOM/IAF TUNGG
356 PI

ELEV 661	D	TDZE 650
----------	----------	----------



HIRL Rwy 4-22 and 13-31 FAF to MAP 5.2 NM					
Knots	60	90	120	150	180
Min:Sec	5:12	3:28	2:36	2:05	1:44
CATEGORY	A	B	C	D	E
S-ILS 31 *	850/24		200 (200-1/2)		
S-LOC 31	1120/24	470 (500-1/2)	1120/50	470 (500-1)	
CIRCLING	1160-1	499 (500-1)	1180-1 1/2 519 (600-1 1/2)	1400-2 1/4 739 (800-2 1/4)	1680-3 1019 (1100-3)

EC-3, 16 APR 2026 to 14 MAY 2026

EC-3, 16 APR 2026 to 14 MAY 2026