

WAAS CH 60922 W13A	APP CRS 128°	Rwy Ldg TDZE 632 Apt Elev 661
--	------------------------	---

RNAV (GPS) RWY 13

GENERAL DOWNING - PEORIA INTL (PIA)

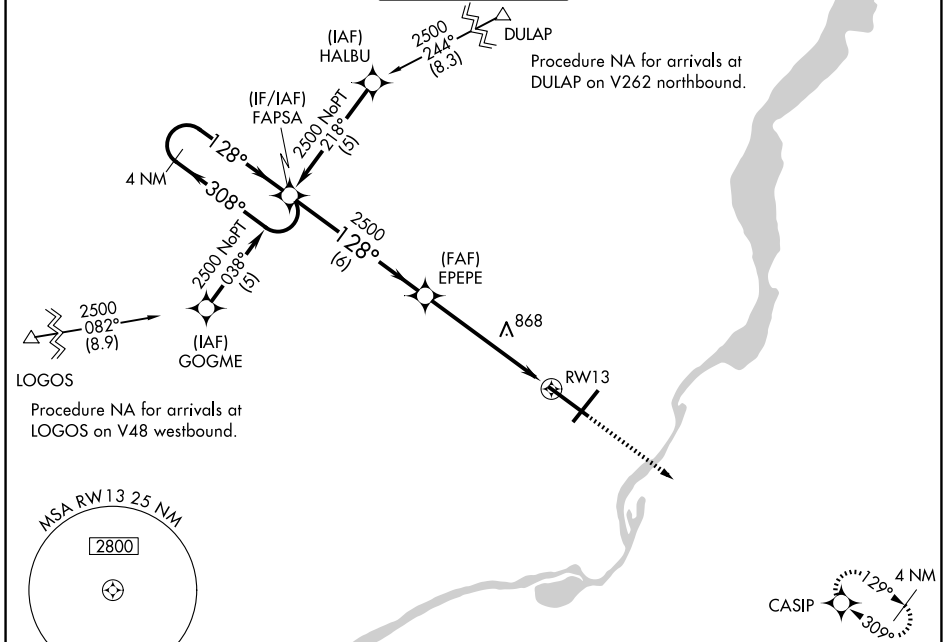
RNP APCH - GPS.

▼ For uncompensated Baro-VNAV systems, LNAV/VNAV NA below -19°C or above 54°C. When local altimeter setting not received, use Lincoln altimeter setting increase LPV DA to 1110 feet and all visibilities ¼ SM. Increase LNAV/VNAV DA to 1168 feet and all visibilities ½ SM.

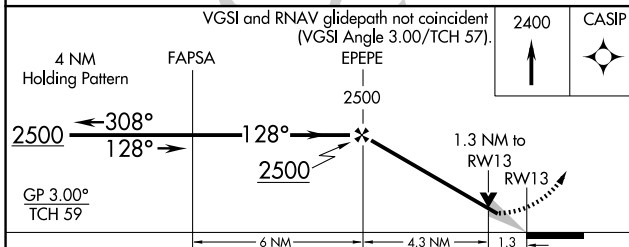
▲ Increase all MDAs 100 feet and LNAV visibility Cat C/D ¼ SM, and Circling visibility Cat C/D ½ SM. Baro-VNAV and VDP NA when using Lincoln altimeter setting. For inop ALS, increase LPV all Cats visibility to 1½ SM, LNAV Cat A/B visibility to 1 SM and Cat C/D visibility to 1½ SM. For inop ALS when using Lincoln altimeter setting, increase LPV visibility all Cats to 1½ SM and LNAV Cat A/B visibility to 1 SM.

MALSR MISSED APPROACH: Climb to 2400 direct CASIP and hold.

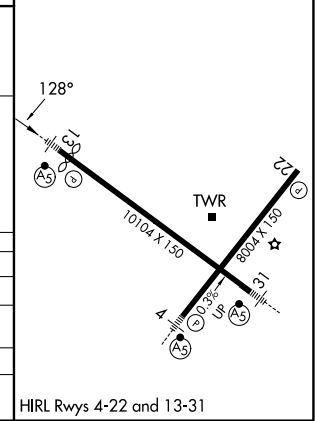
ATIS 126.1 282.2	SAINT LOUIS APP CON 125.8 269.2	PEORIA TOWER 124.0 353.85	GND CON 121.85 348.6	CLNC DEL 124.675 317.55
----------------------------	---	-------------------------------------	--------------------------------	-----------------------------------



ELEV 661		TDZE 632
----------	--	----------



CATEGORY	A	B	C	D
LPV DA		1025-¾	389 (400-¾)	
LNAV/VNAV DA		1083-1	447 (500-1)	
LNAV MDA	1120-½	484 (500-½)	1120-1	484 (500-1)
CIRCLING	1160-1	499 (500-1)	1180-1½ 519 (600-1½)	1400-2¼ 739 (800-2¼)



EC-3, 16 APR 2026 to 14 MAY 2026

EC-3, 16 APR 2026 to 14 MAY 2026