


WAAS CH 77509 W31A	APP CRS 309°	Rwy Ldg 10104 TDZE 650 Apt Elev 661
--	------------------------	--

RNAV (GPS) RWY 31

GENERAL DOWNING - PEORIA INTL (PIA)

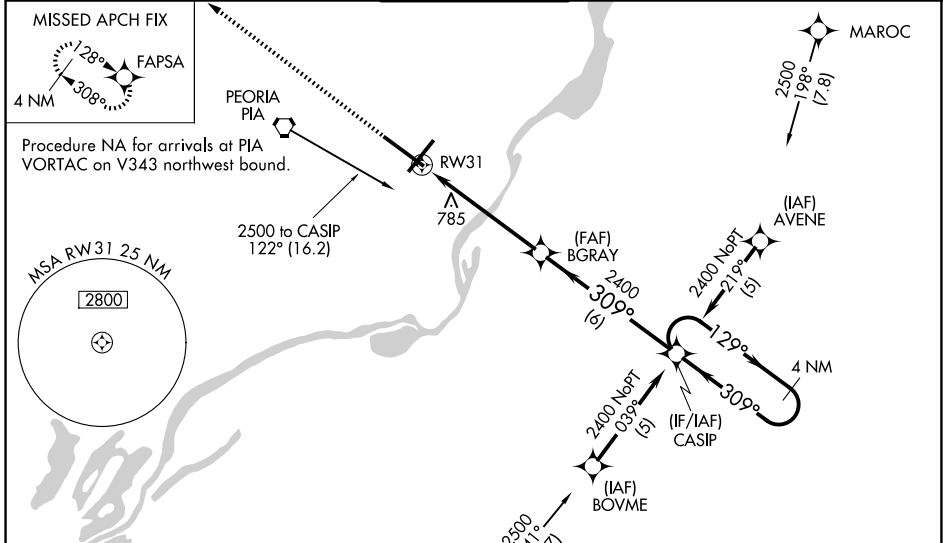
RNP APCH - GPS

▼ For uncompensated Baro-VNAV systems, LNAV/VNAV NA below -20°C or above 54°C.
 ▲ When local altimeter setting not received, use Lincoln altimeter setting and increase LPV DA to 1028 feet and all visibilities to RVR 3500; increase LNAV/VNAV DA to 1211 feet and all visibilities to 1 ¼ SM; increase all MDAs 100 feet and LNAV visibility Cat C/D to 1 ¼ SM, and Circling visibility Cat C/D ½ SM. Baro-VNAV and VDP NA when using Lincoln altimeter setting. For inop ALS, increase LPV all Cats visibility to RVR 4500, LNAV/VNAV all Cats visibility to 1 ¾ SM, and LNAV visibility Cat C/D to 1 ¾ SM. For inop ALS when using Lincoln altimeter setting, increase LPV all Cats visibility to RVR 5500, LNAV/VNAV all Cats visibility to 1 ¾ SM, and LNAV visibility Cat C/D to 1 ¾ SM.

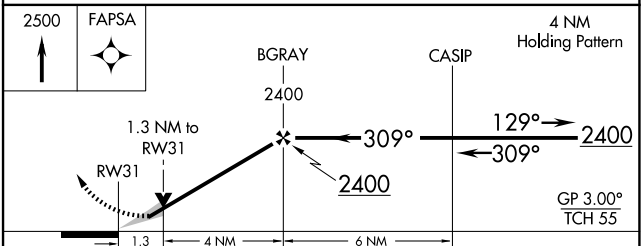
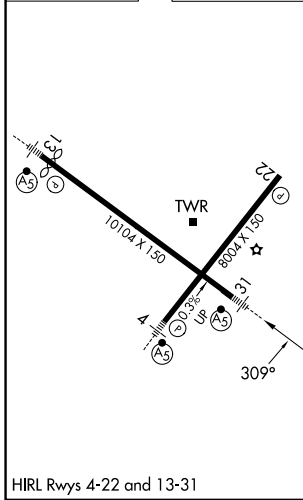
MALSRL


MISSED APPROACH:
 Climb to 2500 direct FAPSA and hold.

ATIS 126.1 282.2	SAINT LOUIS APP CON 125.8 269.2	PEORIA TOWER 124.0 353.85	GND CON 121.85 348.6	CLNC DEL 124.675 317.55
----------------------------	---	-------------------------------------	--------------------------------	-----------------------------------



ELEV 661	D	TDZE 650
----------	----------	----------



CATEGORY	A	B	C	D
LPV DA		939/24	289 (300-½)	
LNAV/VNAV DA		1122/60	472 (500-1¼)	
LNAV MDA	1120/24	470 (500-½)	1120/50	470 (500-1)
CIRCLING	1160-1	499 (500-1)	1180-1½ 519 (600-1½)	1400-2¼ 739 (800-2¼)