

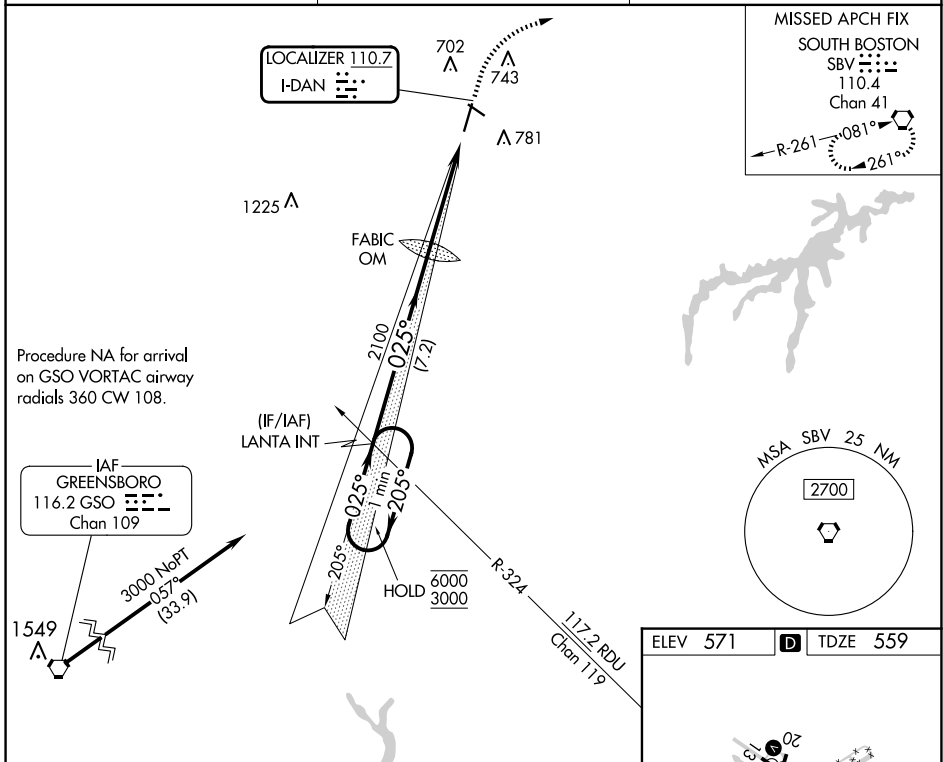
LOC I-DAN 110.7	APP CRS 025°	Rwy Idg TDZE Apt Elev	5600 559 571
---------------------------	------------------------	-----------------------------	---

ILS or LOC RWY 2

DANVILLE RGNL (DAN)

<p>For inop ALS, increase S-LOC 2 Cat C/D visibility to 1 3/8 SM.</p>		<p>MISSED APPROACH: Climb to 2000 then climbing right turn to 3000 direct SBV VORTAC and hold.</p>

ASOS 128.125	WASHINGTON CENTER 124.05 352.0	UNICOM 123.05 (CTAF) 1
------------------------	--	----------------------------------



<p>One Minute Holding Pattern</p> <p>6000 ← 205°</p> <p>3000 → 025°</p> <p>GS 3.00° TCH 54</p>	LANTA INT			
	<p>FABIC OM</p> <p>2000 3000 SBV</p> <p>2019</p> <p>2100</p> <p>7.2 NM 4.5 NM</p>			
CATEGORY	A	B	C	D
S-ILS 2	759-1/2 200 (200-1/2)			
S-LOC 2	1020-1/2	461 (500-1/2)	1020-1	461 (500-1)
CIRCLING	1120-1	549 (600-1)	1120-1 1/2	1200-2 629 (700-2)

ELEV 571	D	TDZE 559
----------	----------	----------

623 ☆

20

3900 x 100

3900 x 100

1.1% UP

0.3% UP

2

025°

FAF to MAP 4.5 NM

HIRL Rwy 2-20 1

MIRL Rwy 13-31 1

REIL Rwy 13, 20 and 31 1

Knots	60	90	120	150	180
Min:Sec	4:30	3:00	2:15	1:48	1:30

NE-3, 16 APR 2026 to 14 MAY 2026

NE-3, 16 APR 2026 to 14 MAY 2026