

MILTON, FLORIDA

ILS Y or LOC Y RWY 14

LOC/DME I-NSE 111.75 Chan 54(Y)	APCH CRS 139°	Rwy Ildg TDZE Arprt Elev 6001 199 199
---	-------------------------	---

[USN]

WHITING FLD NAS - NORTH (KNSE)

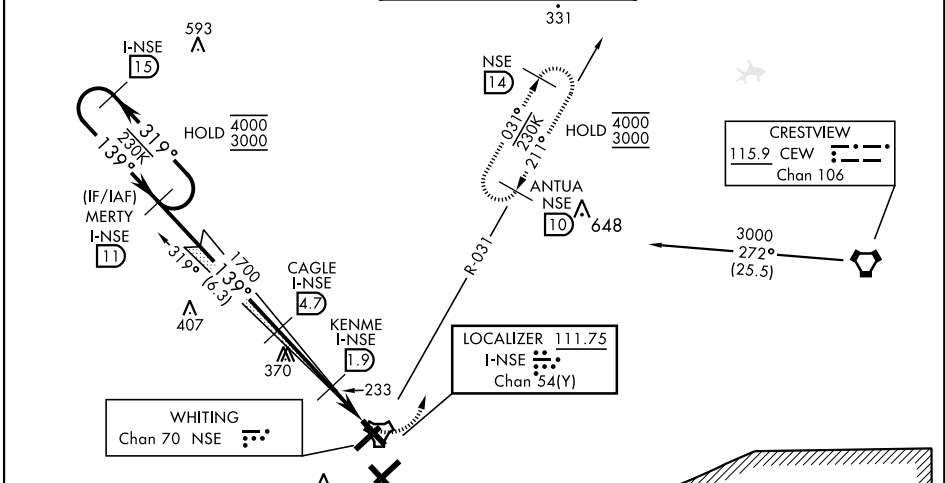
TACAN and DME required.

* When ALS inop, increase vis to ¾ mile.
 ** When ALS inop, increase vis to 1 mile.
 *** Circling not authorized S of Rwy 5 and 32.

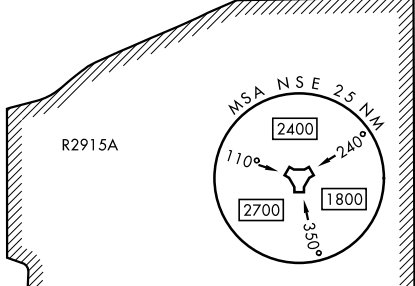


MISSED APPROACH: Climb to 700. Then climbing left turn to 3000. Intercept NSE TACAN R-031 to ANTUA and hold. Continue climb in hold. Contact Pensacola APP CON.

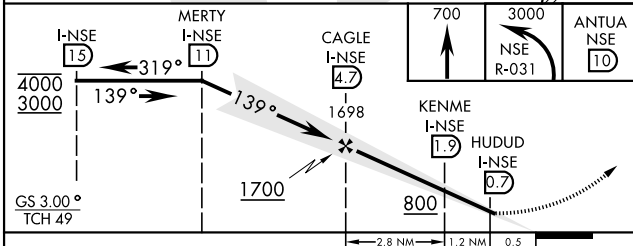
ATIS * 290.325	PENSACOLA APP CON 127.35 278.8	NORTH WHITING TOWER * 121.4 306.925	GND CON 251.15	CLNC DEL 257.775	ASR
--------------------------	--	---	--------------------------	----------------------------	-----



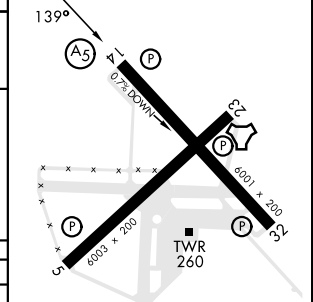
- CAUTION:**
- Intensive VFR student training all quadrants.
 - Whiting Fld NAS - South located 1 NM S.



EMERG SAFE ALT 100 NM 3500



ELEV	199	TDZE	199
------	-----	------	-----



CATEGORY	A	B	C	D
S-ILS 14 *	399-½	200	(200-½)	
S-LOC 14 **	500-½	301	(400-½)	
*** CIRCLING	560-1 361 (400-1)	660-1 461 (500-1)	660-1½ 461 (500-1½)	760-2 561 (600-2)

HIRL all rwys

MILTON, FLORIDA
Amdt 6 18APR24

30° 43' N-87° 01' W

WHITING FLD NAS - NORTH (KNSE)

ILS Y or LOC Y RWY 14

SE-3, 16 APR 2026 to 14 MAY 2026

SE-3, 16 APR 2026 to 14 MAY 2026