

WAAS CH <b>93808</b> <b>W35A</b>	APP CRS <b>355°</b>	Rwy Ldg TDZE Apt Elev	<b>7201</b> <b>1008</b> <b>1009</b>
--	------------------------	-----------------------------	---

# RNAV (GPS) RWY 35

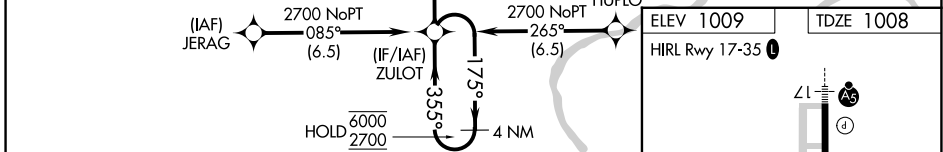
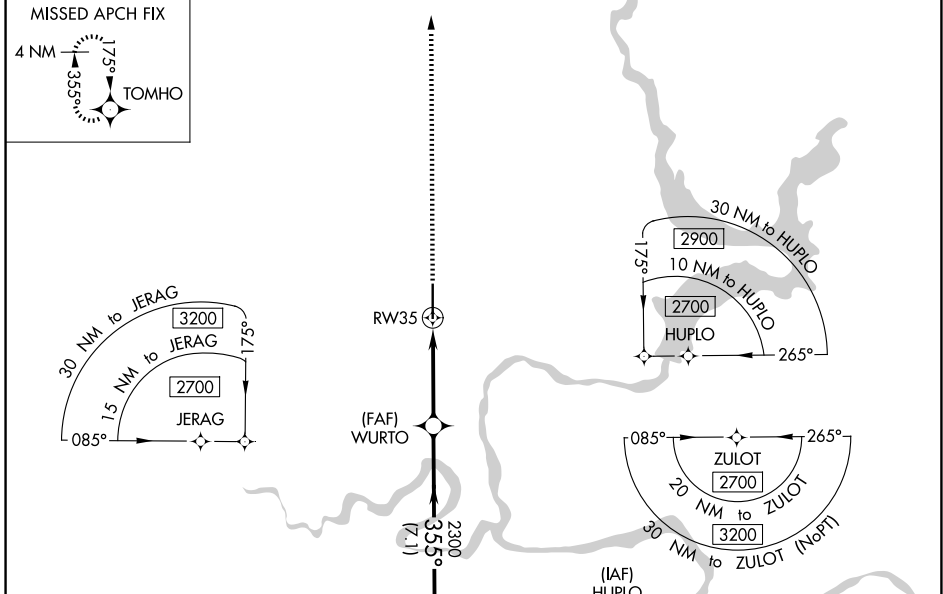
PONCA CITY RGNL (PNC)

RNP APCH - GPS.

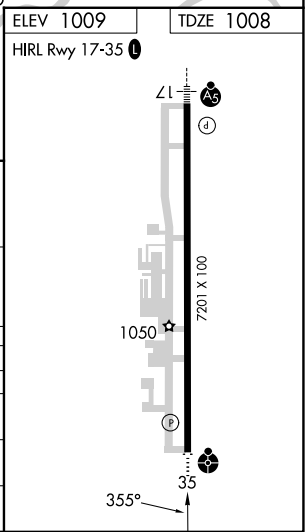
▼ For uncompensated Baro-VNAV systems, LNAV/VNAV NA below -16°C or above 54°C. Baro-VNAV and VDP NA when using WLD altimeter setting. When local altimeter setting not received, use WLD altimeter setting and increase LPV DA to 1377 feet and all visibilities ¼ SM. Increase LNAV/VNAV DA to 1560 feet and all visibilities ⅓ SM. Increase all MDAs 100 feet and LNAV visibility Cat C/D ⅓ SM, and Circling visibility Cat C/D ½ SM.

ODALS  
MISSED APPROACH:  
Climb to 2800 direct  
TOMHO and hold.

ASOS <b>134.075</b>	KANSAS CITY CENTER <b>127.8 319.1</b>	UNICOM <b>123.0 (CTAF)</b>
------------------------	--	-------------------------------



4 NM Holding Pattern	ZULOT	2800	TOMHO	
6000 2700	← 175°	→ 355°		
GP 3.02° TCH 46		355°		
	7.1 NM	2.4 NM	1.5 NM	
CATEGORY	A	B	C	D
LPV DA		1295-¾	287 (300-¾)	
LNAV/VNAV DA		1478-1¼	470 (500-1¼)	
LNAV MDA	1540-¾	532 (600-¾)	1540-1⅛	532 (600-1⅛)
CIRCLING	1540-1 531 (600-1)	1580-1 571 (600-1)	1800-2¼ 791 (800-2¼)	1880-2¾ 871 (900-2¾)



SC-1, 16 APR 2026 to 14 MAY 2026

SC-1, 16 APR 2026 to 14 MAY 2026