

LOC/DME I-SGF <b>109.9</b> Chan <b>36</b>	APP CRS <b>019°</b>	Rwy Ldg TDZE Apt Elev	<b>7003</b> <b>1265</b> <b>1268</b>
---	------------------------	-----------------------------	---

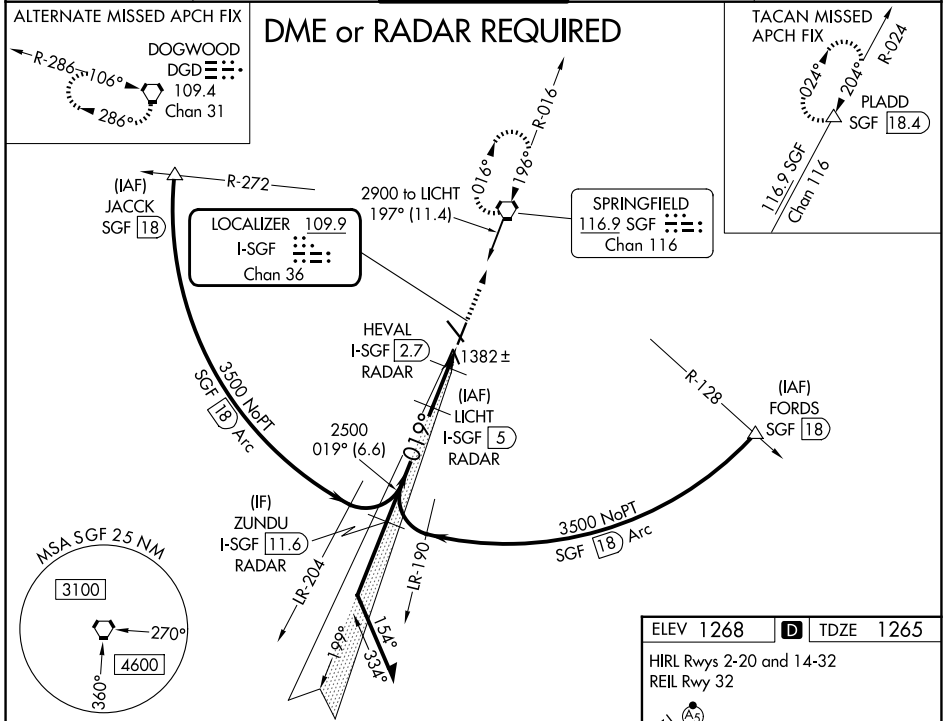
# ILS or LOC RWY 2

SPRINGFIELD-BRANSON NTL (SGF)

**⚠** DME or RADAR required. For inop MALSR, increase S-ILS 2 Cat E visibility to RVR 4000, and S-LOC 2 Cat E visibility to 1¼ mile. #RVR 1800 authorized with use of FD or AP or HUD to DA.

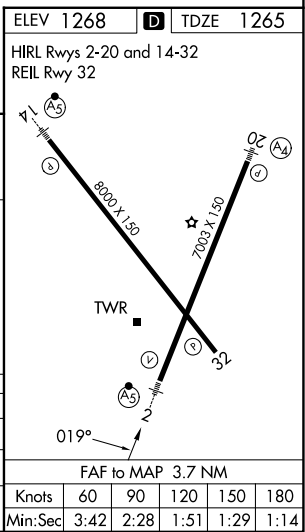
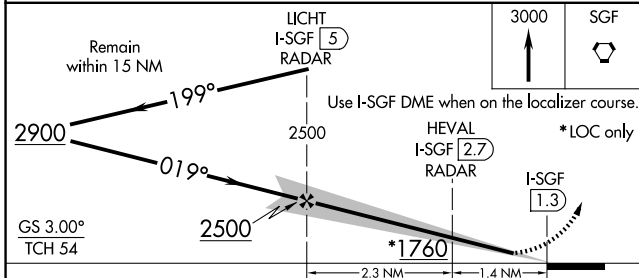
**MALSR**  
MISSED APPROACH: Climb to 3000 direct SGF VORTAC and hold (TACAN aircraft continue on SGF VORTAC R-024 to PLADD/SGF 18.4 DME and hold northeast, right turn, 204° inbound).

ATIS <b>135.125</b>	SPRINGFIELD APP CON <b>124.95 290.5</b>	SPRINGFIELD TOWER <b>119.9 257.8</b>	GND CON <b>121.9 251.15</b>	CLNC DEL <b>123.675</b>
------------------------	--	---	--------------------------------	----------------------------



NC-3, 16 APR 2026 to 14 MAY 2026

NC-3, 16 APR 2026 to 14 MAY 2026



CATEGORY	A	B	C	D	E
S-ILS 2#	1465/24 200 (200-½)				
S-LOC 2	1700/24	435 (500-½)	1700/40	435 (500-¾)	
CIRCLING	1760-1 492 (500-1)	1820-1 552 (600-1)	1820-1½ 552 (600-1½)	1920-2 652 (700-2)	2080-3 812 (900-3)

ELEV 1268	<b>D</b>	TDZE 1265			
HIRL Rwy 2-20 and 14-32 REIL Rwy 32					
FAF to MAP 3.7 NM					
Knots	60	90	120	150	180
Min:Sec	3:42	2:28	1:51	1:29	1:14