

WAAS CH <b>72933</b> <b>W32A</b>	APP CRS <b>319°</b>	Rwy Ldg TDZE Apt Elev	<b>8000</b> <b>1268</b> <b>1268</b>
--	------------------------	-----------------------------	---

# RNAV (GPS) RWY 32

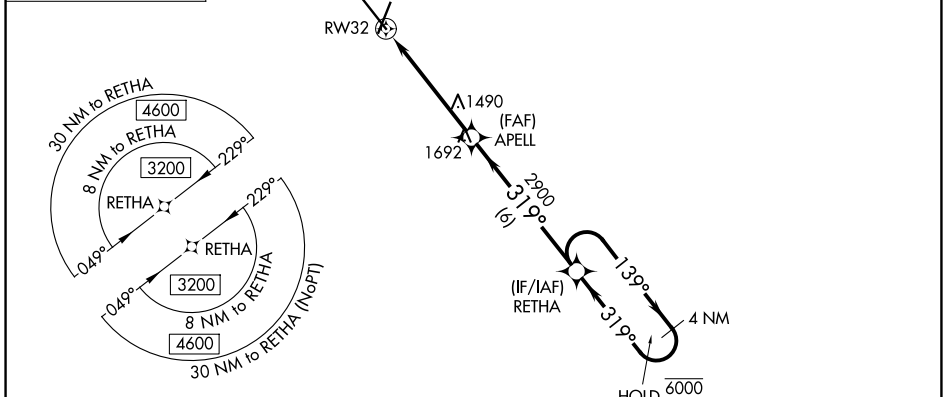
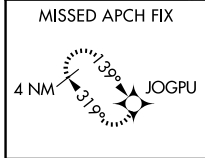
SPRINGFIELD-BRANSON NTL (SGF)

RNP APCH - GPS.

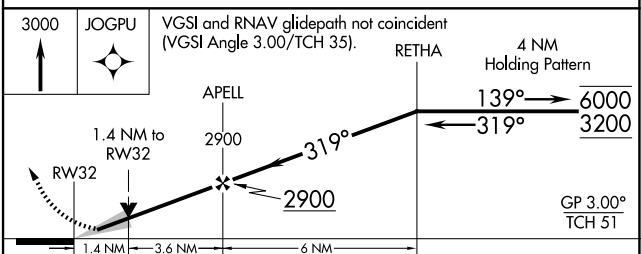
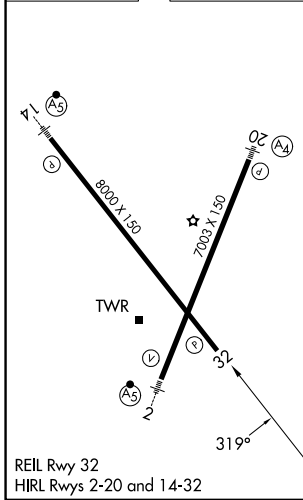
For uncompensated Baro-VNAV systems, LNAV/VNAV NA below -16°C or above 54°C. Baro-VNAV and VDP NA when using HFJ altimeter setting. When local altimeter setting not received, use HFJ altimeter setting and increase LPV DA to 1608 feet and all visibilities ¼ SM. Increase LNAV/VNAV DA to 1820 feet and all visibilities ¼ SM. Increase all MDAs 100 feet and LNAV visibility Cat C and D ¼ SM, and Circling visibility Cat C and D ½ SM.

MISSED APPROACH: Climb to 3000 direct JOGPU and hold.

ATIS <b>135.125</b>	SPRINGFIELD APP CON <b>124.95 290.5</b>	SPRINGFIELD TOWER <b>119.9 257.8</b>	GND CON <b>121.9 251.15</b>	CLNC DEL <b>123.675</b>
------------------------	--	---	--------------------------------	----------------------------



ELEV 1268	<b>D</b>	TDZE 1268
-----------	----------	-----------



CATEGORY	A	B	C	D
LPV DA		1518-¾	250 (300-¾)	
LNAV/VNAV DA		1730-1⅜	462 (500-1⅜)	
LNAV MDA	1740-1	472 (500-1)	1740-1⅜	472 (500-1⅜)
CIRCLING	1760-1 492 (500-1)	1820-1 552 (600-1)	1820-1½ 552 (600-1½)	1920-2 652 (700-2)

NC-3, 16 APR 2026 to 14 MAY 2026

NC-3, 16 APR 2026 to 14 MAY 2026