

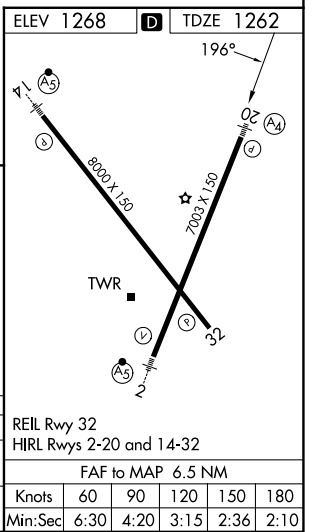
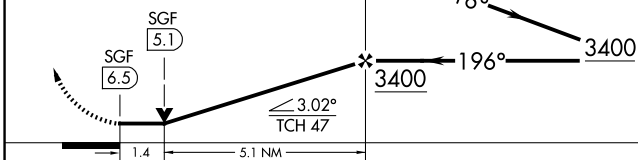
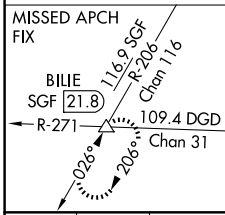
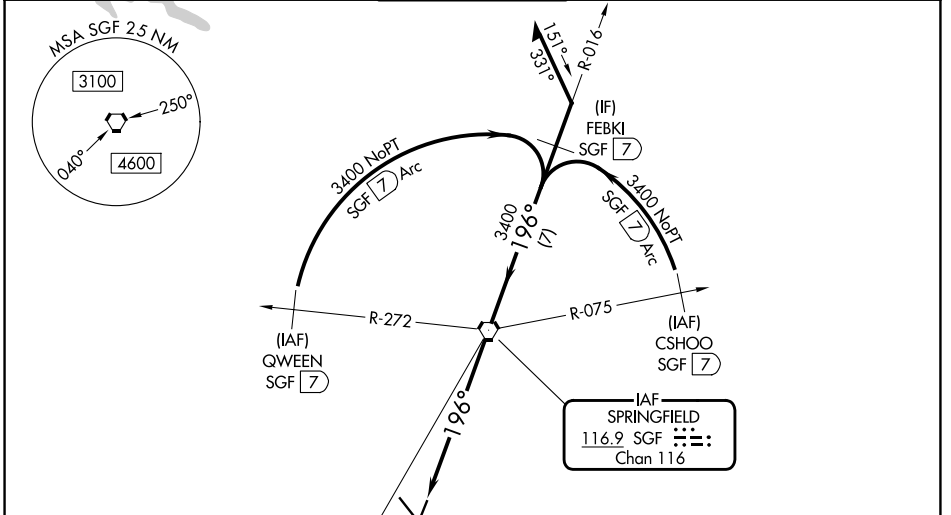
| | | | |
|---|------------------------|-----------------------------|---|
| VORTAC SGF 116.9 Chan 116 | APP CRS 196° | Rwy Ldg TDZE Apt Elev | 7003 1262 1268 |
|---|------------------------|-----------------------------|---|

VOR or TACAN RWY 20

SPRINGFIELD-BRANSON NTL (SGF)

| | | | |
|---------------|--|------------|---|
| DME required. | <p>▼ NA Rwy 20 helicopter visibility reduction below 3/4 SM NA. For inop ALS, increase S-20 Cat E to 1 3/8 SM. VDP NA when using HFJ altimeter setting. When local altimeter setting not received, use HFJ altimeter setting: increase all MDAs 100 feet; increase S-20 visibility Cats C, D and E 1/4 SM, and Circling visibility Cat C and D 1/2 SM. For inop ALS, use HFJ altimeter setting: increase S-20 visibility Cats C, D and E to 1 3/4 SM.</p> | MALS A4 | MISSED APPROACH: Climb to 3000 then right turn to intercept SGF R-206 to BILIE INT/SGF 21.8 DME and hold. |
| | | | |

| | | | | |
|------------------------|--|---|--------------------------------|----------------------------|
| ATIS 135.125 | SPRINGFIELD APP CON 124.95 290.5 | SPRINGFIELD TOWER 119.9 257.8 | GND CON 121.9 251.15 | CLNC DEL 123.675 |
|------------------------|--|---|--------------------------------|----------------------------|



| | | | | | |
|----------|------------------------|--------------------|----------------------------|--------------------|--------------------|
| CATEGORY | A | B | C | D | E |
| S-20 | 1760-3/4 498 (500-3/4) | | 1760-1 1/8 498 (500-1 1/8) | | |
| CIRCLING | 1760-1 492 (500-1) | 1820-1 552 (600-1) | 1820-1 1/2 552 (600-1 1/2) | 1920-2 652 (700-2) | 2080-3 812 (900-3) |

NC-3, 16 APR 2026 to 14 MAY 2026

NC-3, 16 APR 2026 to 14 MAY 2026