

APP CRS 317°	Rwy Ldg 7200
	TDZE 589
	Apt Elev 589

RNAV (GPS) RWY 32

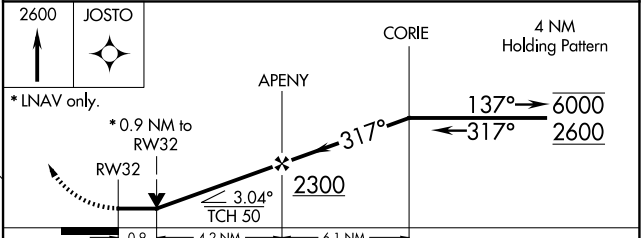
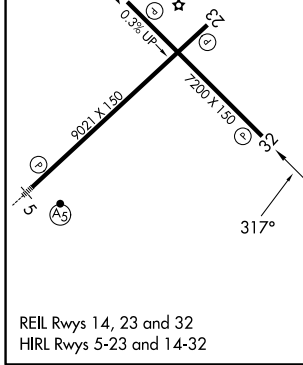
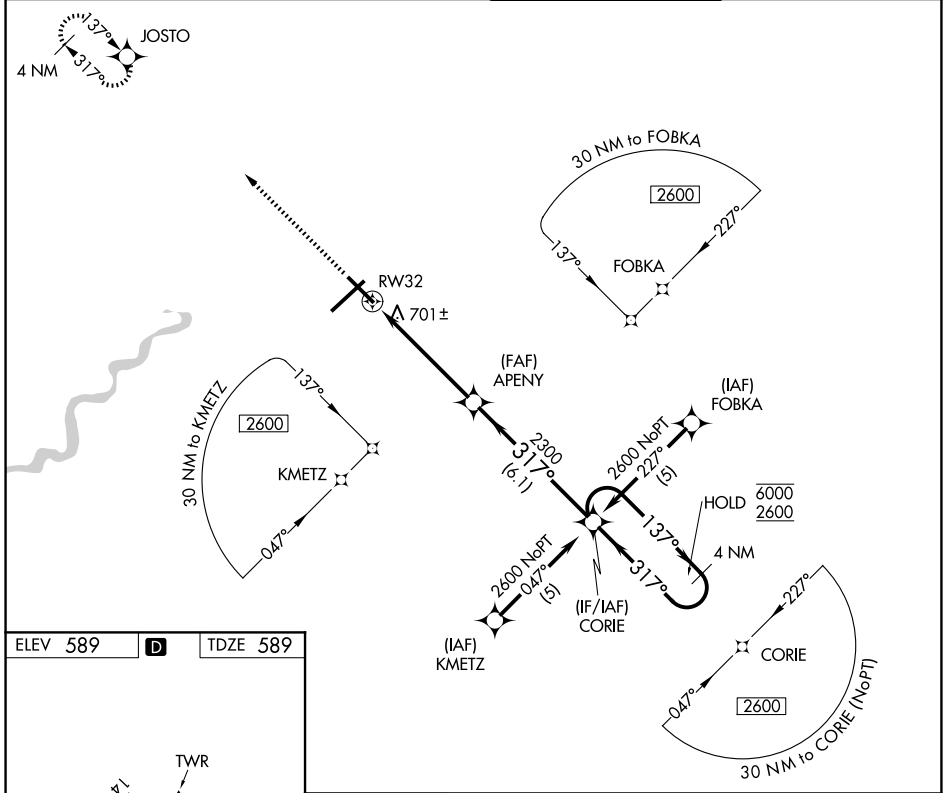
TERRE HAUTE RGNL (HUF)

RNP APCH.

▼ VDP NA when using Paris altimeter setting. Rwy 32 helicopter visibility reduction below 3/4 SM NA.
 ▲ When local altimeter setting not received, use Paris altimeter setting and increase all MDAs 80 ASR feet, LNAV Cat C/D visibility to 1 3/8 SM and Circling Cat C/D 1/4 SM.

MISSED APPROACH: Climb to 2600 direct JOSTO and hold.

ATIS 127.5 269.375	HULMAN APP CON 125.45 339.8	HULMAN TOWER 134.725 322.475	GND CON 121.6 348.6
------------------------------	---------------------------------------	--	-------------------------------



CATEGORY	A	B	C	D
LNAV MDA	980-1	391 (400-1)	980-1 1/8 391 (400-1 1/8)	980-1 1/4 391 (400-1 1/4)
CIRCLING	1040-1	451 (500-1)	1220-1 3/4 631 (700-1 3/4)	1220-2 631 (700-2)

EC-2, 16 APR 2026 to 14 MAY 2026

EC-2, 16 APR 2026 to 14 MAY 2026