

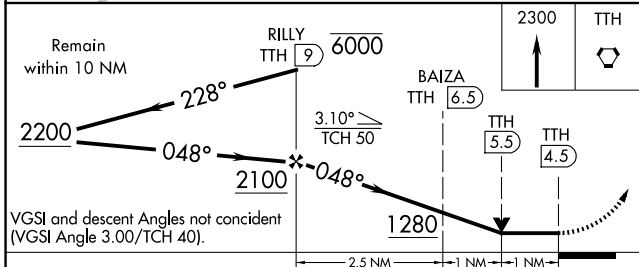
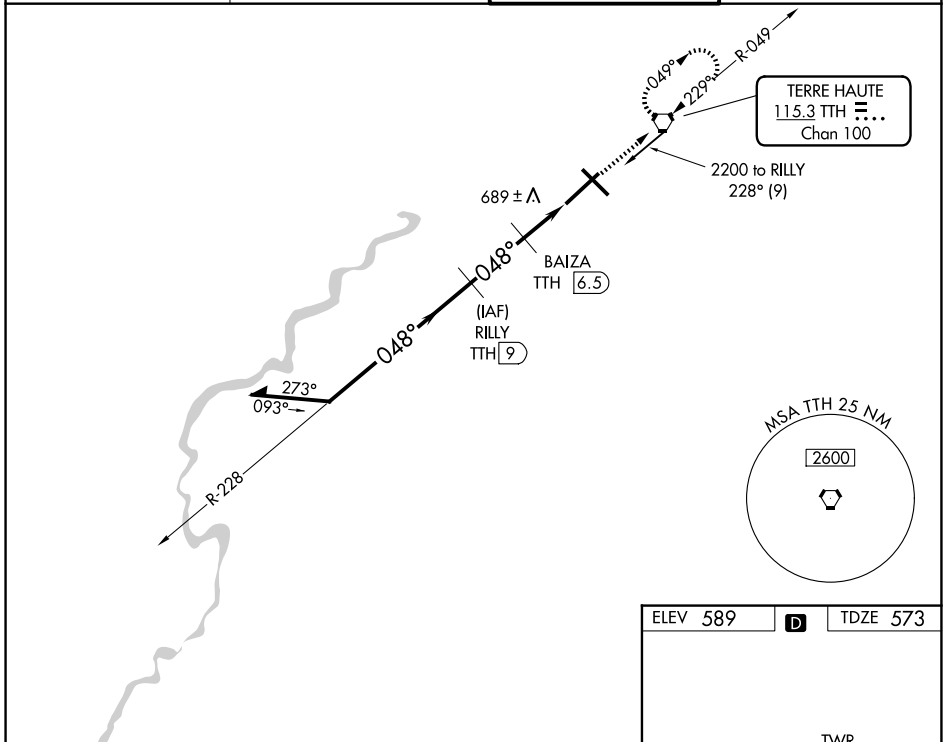
VORTAC TTH 115.3 Chan 100	APP CRS 048°	Rwy Ldg TDZE Apt Elev 9020 573 589
---	------------------------	--

VOR RWY 5

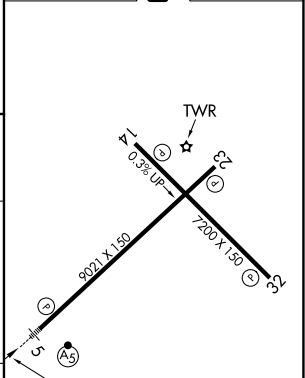
TERRE HAUTE RGNL (HUF)

DME required.	MALSR 	MISSED APPROACH: Climb to 2300 direct TTH VORTAC and hold.
<p>▽ VDP NA when using Paris, IL altimeter setting. When local altimeter setting not received, use Paris altimeter setting and increase all MDA 80 feet and Circling Cat C/D visibility ¼ SM. For inop ALS, increase S-5 Cat C/D visibility to RVR 6000. Rwy 5 helicopter visibility reduction below ¾ SM NA.</p> <p>▲ ASR</p>		

ATIS 127.5 269.375	HULMAN APP CON 125.45 339.8	HULMAN TOWER 134.725 322.475	GND CON 121.6 348.6
------------------------------	---------------------------------------	--	-------------------------------



ELEV 589	D	TDZE 573
----------	----------	----------



CATEGORY	A	B	C	D
S-5		960/50	387 (400-1)	
CIRCLING	1040-1	451 (500-1)	1220-1¾ 631 (700-1¾)	1220-2 631 (700-2)

REIL Rwy 14, 23 and 32
HIRL Rwy 5-23 and 14-32

EC-2, 16 APR 2026 to 14 MAY 2026

EC-2, 16 APR 2026 to 14 MAY 2026