

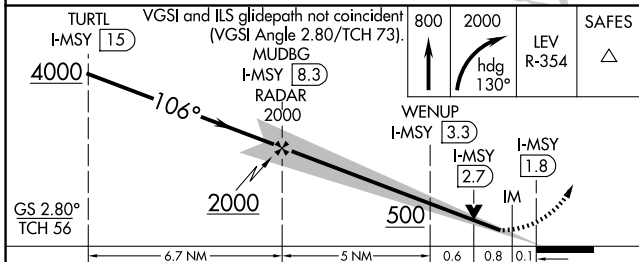
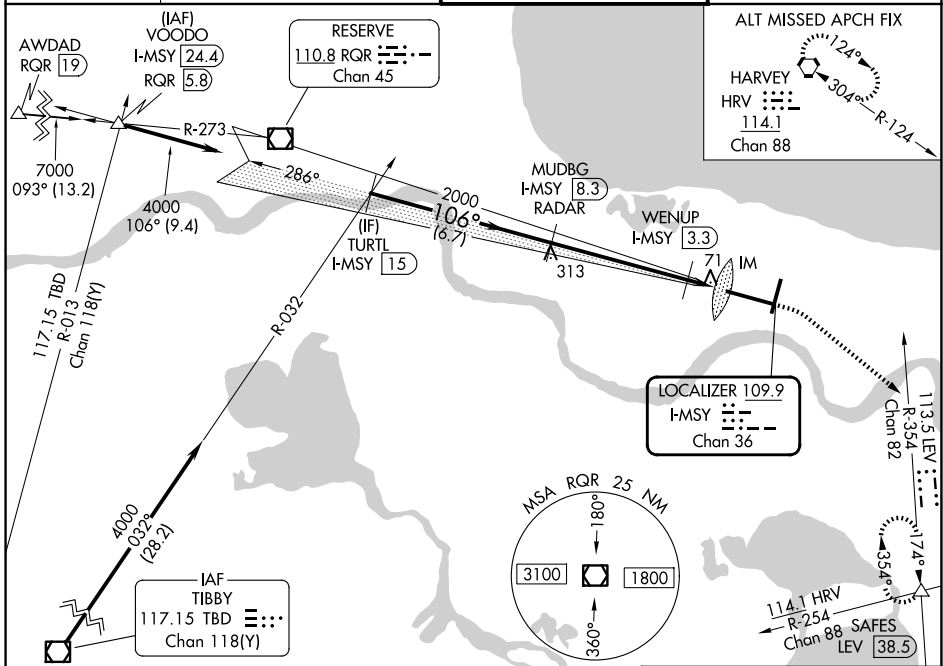
LOC/DME I-MSY 109.9 Chan 36	APP CRS 106°	Rwy Ldg 9800 TDZE 3 Apt Elev 3
---	------------------------	---

ILS or LOC RWY 11

LOUIS ARMSTRONG NEW ORLEANS INTL (MSY)

RADAR or DME required.		ALSf-2 	MISSED APPROACH: Climb to 800 then climbing right turn to 2000 on heading 130° and on LEV VORTAC R-354 to SAFES INT/LEV 38.5 DME and hold.
For inop ALS, increase S-LOC 11 Cat C/D visibility to 1 3/8 SM and increase WENUP fix minimums S-LOC 11 Cat C/D visibility to RVR 4500.			

D-ATIS 127.55	NEW ORLEANS APP CON 125.5 350.35 133.15 290.3 (W) (E)	NEW ORLEANS TOWER 119.5 254.3	GND CON 121.9 273.525
-------------------------	---	---	---------------------------------



ELEV 3	TDZE 3
--------	--------

CATEGORY	A	B	C	D
S-ILS 11	203/18		200 (200-1/2)	
S-LOC 11	500/24	497 (500-1/2)	500/50	497 (500-1)
CIRCLING	520-1	540-1	580-1 1/2	580-2
	517 (600-1)	537 (600-1)	577 (600-1 1/2)	577 (600-2)
WENUP FIX MINIMUMS				
S-LOC 11	340/24	337 (400-1/2)	340/26	337 (400-1/2)
CIRCLING	520-1	540-1	580-1 1/2	580-2
	517 (600-1)	537 (600-1)	577 (600-1 1/2)	577 (600-2)

RLS Rwy 2	FAF to MAP 6.5 NM					
TDZ/CL Rwy 11	Knots					
HIRL All Runways	60	90	120	150	180	
	Min:Sec	6:30	4:20	3:15	2:36	2:10

SC-4, 16 APR 2026 to 14 MAY 2026

SC-4, 16 APR 2026 to 14 MAY 2026